



UT MARTIN SKYHAWKS

WOMEN'S BASKETBALL 2020-21 GAME NOTES



SIX OVC CHAMPIONSHIPS • FOUR OVC TOURNAMENT TITLES • FOUR NCAA TOURNAMENT APPEARANCES • FIVE WOMENS NIT QUALIFIERS

THE MATCHUP



UT MARTIN SKYHAWKS | (2-1, 1-0 OVC)

Head Coach: Kevin McMillan (Rhodes College, 1989)
Career Record: 220-137 (12th season)
Record at UTM: Same

Points: Chelsey Perry (28.3) **Steals:** Chelsey Perry (1.7)
Rebounds: Chelsey Perry (7.3) **Blocks:** Chelsey Perry (1.3)
Assists: Seygan Robins (4.7)

PPG..... 67.7
 Opp. PPG..... 70.0
 Margin..... -2.3
 FG%..... 46.3
 3PT FG%..... 37.0
 FT%..... 70.4
 RPG..... 35.0
 APG..... 15.7
 TPG..... 17.3
 SPG..... 5.6
 BPG..... 2.3

VS

JACKSONVILLE STATE | (3-2, 0-1 OVC)

Head Coach: Rick Pietri
Career Record: 327-273 (21st season)
Record at JSU: 107-106 (8th season)

Points: Yamia Johnson (16.6) **Steals:** Martin/Day (1.0)
Rebounds: Jessie Day (6.2) **Blocks:** 3 tied (0.4)
Assists: Taylor Hawks (3.8)

PPG..... 63.6
 Opp. PPG..... 59.0
 Margin..... +4.6
 FG%..... 36.6
 3PT FG%..... 29.9
 FT%..... 56.1
 RPG..... 39.8
 APG..... 11.6
 TPG..... 12.0
 SPG..... 6.0
 BPG..... 1.6

PROBABLE STARTING LINEUP

G 5	G 23	F 11	F 20	F 21
SEYGAN ROBINS 9.3 PPG • 1.3 RPG 4.7 APG • 1.0 SPG	HAYLEY HARRISON 6.3 PPG • 2.0 RPG 0.7 APG • 0.7 SPG	DASIA YOUNG 7.0 PPG • 6.3 RPG 2.7 APG • 0.0 SPG	CHELSEY PERRY 28.3 PPG • 7.3 RPG 2.0 APG • 1.3 BPG	MADDIE WALDROP 6.0 PPG • 7.0 RPG 2.3 APG • 1.0 SPG

FULL COURT PRESS



JACKSONVILLE STATE

#11 • DASIA YOUNG

5-11 • JONESBORO, ARK. • SO.

Along with matching up with the opposition's top offensive threat, sophomore wing Dasia Young has produced solid numbers, including four points, nine rebounds and three assists in her last outing.

Earlier this season, Young tallied 12 points and five rebounds in the season-opener at Louisville while starting the last 23 contests for the Skyhawks.

• The University of Tennessee at Martin women's basketball team looks to close out the 2020 calendar year with an Ohio Valley Conference matchup at Jacksonville State on Wednesday, Dec. 30. Tipoff from Pete Mathews Coliseum is tentatively scheduled for 4:30 p.m. and will be broadcast on ESPN+.

• The Skyhawks (2-1, 1-0 OVC) return to action after another lengthy 12-day layoff, playing just their fourth game in the last 25 days. UT Martin leads the league by shooting 46.3 percent from the field while its opponents shoot just 39.8 percent this season. The Skyhawks also ranks amongst league leaders in assists per game (15.7), fewest turnovers (52), free throw percentage (70.4) and three-point field goal percentage (37.0).

• UT Martin is led offensively by reigning OVC Player of the Year and 10-time OVC Player of the Week Chelsey Perry. Perry ranks second nationally with 28.3 points per game while also averaging 7.3 rebounds per game. The senior forward enters the contest with 199 career blocks and needs just five blocks to become the program's all-time leaders. Sophomore point guard Seygan Robins ranks second on the team with 9.3 points per game while her 4.7 assists per game lead the league.

• UT Martin head coach Kevin McMillan posted his 220th career victory in the win over Southeast Missouri in the Skyhawks last contest. McMillan ranks as the program's all-time wins leader and the league's active wins leader. Jacksonville State is led by head coach Rick Pietri who is 107-106 in his eight seasons at the helm of the Gamecocks.

• Jacksonville State (3-2, 0-1 OVC) also had to endure a lengthy break in action, last seeing the court on Dec. 16 when picking up a 63-46 home victory over Samford. The Gamecocks have been perfect this season at The Pete, winning all three contests against Georgia Southern, New Orleans and Samford with an average margin of victory of 15.3 points.

• The Gamecocks are led offensively by Yamia Johnson with 16.6 points per game while Taylor Hawks and Imari Martin both provide the scoring balance with 8.0 points per game. Jessie Day leads the team with 6.2 rebounds per game while Hawks' 3.8 assists per game pace the squad.

• Wednesday's outing marks the 39th meeting between the two programs in a series which dates back to 1983. UT Martin holds a narrow 21-17 lead in the overall series history but has dominated the matchup as of late, winning the last 13 meetings.

SERIES HISTORY

UT Martin leads series 21-17

Last Meeting	Feb. 22, 2020
Game Result	W, 73-56
Streak	UTM W13
First Meeting	March 3, 1983
UTM vs. JSU in Martin	11-7
UTM vs. JSU in Jacksonville	9-10
McMillan vs. Jacksonville State	13-2

2020-21 SCHEDULE/RESULTS

OVERALL RECORD:	2-1
OVC	1-0
NON-CONFERENCE	1-1
HOME	0-0
AWAY	2-1
NEUTRAL	0-0

DECEMBER

Date	Day	Opponent	TV	Time (CT)
6	Sun.	at #5 Louisville	ACCN	L, 85-67
8	Tues.	at Samford	ESPN+	W, 75-67
18	Fri.	at Southeast Missouri*	ESPN+	W, 61-58
30	Wed.	at Jacksonville State*	ESPN+	4:30 p.m.

JANUARY

Date	Day	Opponent	TV	Time (CT)
2	Sat.	BELMONT*	ESPN+	1 p.m.
7	Thur.	at Tennessee State*	ESPN+	5 p.m.
9	Sat.	at Belmont*	ESPN+	1 p.m.
14	Thur.	AUSTIN PEAY*	ESPN+	5 p.m.
16	Sat.	MURRAY STATE*	ESPN+	1 p.m.
21	Thur.	at Eastern Kentucky*	ESPN+	4 p.m.
23	Sat.	at Morehead State*	ESPN+	Noon
28	Thur.	EASTERN ILLINOIS*	ESPN+	5 p.m.
30	Sat.	SIUE*	ESPN+	1 p.m.

FEBRUARY

Date	Day	Opponent	TV	Time (CT)
1	Mon.	SOUTHEAST MISSOURI*	ESPN+	7 p.m.
4	Thur.	JACKSONVILLE STATE*	ESPN+	5 p.m.
6	Sat.	TENNESSEE TECH*	ESPN+	1 p.m.
11	Thur.	at Austin Peay*	ESPN+	4:30 p.m.
13	Sat.	at Murray State*	ESPN+	4:30 p.m.
18	Thur.	MOREHEAD STATE*	ESPN+	5 p.m.
20	Sat.	EASTERN KENTUCKY*	ESPN+	1 p.m.
25	Thur.	at SIUE*	ESPN+	1 p.m.
27	Sat.	at Eastern Illinois*	ESPN+	1 p.m.

MARCH

Date	Day	Opponent	TV	Time (CT)
3	Wed.	OVC Championship	ESPN+	TBA
4	Thur.	OVC Championship	ESPN+	TBA
5	Fri.	OVC Championship	ESPN+	TBA
6	Sat.	OVC Championship	ESPN+	TBA

Home games in **BOLD CAPS** in Elam Center
 * Ohio Valley Conference game

UNIVERSITY INFORMATION

Location	Martin, Tenn.
Founded	1900; Senior College, 1951
Enrollment	7,117
Nickname	Skyhawks
Colors	Navy Blue & Orange
Affiliation	NCAA Division I
Conference	Ohio Valley
Chancellor	Dr. Keith Carver
Athletics Director	Kurt McGuffin
Athletics Office	731-881-7660
Assistant AD/SWA	Danella Fabianich
Ticket Office Phone	731-881-7207

COACHING STAFF

Head Coach	Kevin McMillan (12th year)
Alma Mater	Rhodes, 1989
Career Record	220-137
Record at UT Martin	Same
E-mail	kmcmillan@utm.edu
Office Phone	731-881-7681

TEAM INFORMATION

2019-20 Overall Record	22-10
2019-20 OVC Record/Finish	16-2 (1st)
Home	13-1
Away	7-8
Neutral	2-1
Letter Winners Returning/Lost	13/4
Starters Returning/Lost	4/1
Newcomers	2

PROGRAM HISTORY

First Year of Basketball	1969
All-Time Basketball Record	655-731
Record at Home	322-204
All-Time OVC Record	257-224

SPORTS INFORMATION

WBB Contact	Alex Boggis
Email	dboggis@utm.edu
Office Phone	731-881-7964
Cell Phone	618-357-1536
Press Row Phone	731-881-7694
Mailing Address	1022 Elam Center Martin, Tenn. 38238
Website	www.UTMSports.com



SKYHAWKS IN PRINT

The name of our institution is the **University of Tennessee at Martin** and if abbreviated, should be referred to as **UT Martin**. The University of Tennessee at Martin should be used as the first reference in a news story. UT Martin should be used in subsequent references and UTM is acceptable in headlines.

Tennessee-Martin, UT-Martin, UT or Martin should **NEVER** be used. The description **Skyhawks** should be used to represent all UT Martin athletic teams. **Hawks** should never be used.

MEET THE SKYHAWKS



FRONT ROW: MACY RIPPY, PAIGE PIPKIN, KYANNAH GRANT, SADE' HUDSON, ZAIRE HICKS, SEYGAN ROBINS AND HAYLEY HARRISON.

SECOND ROW: RAEGAN JOHNSON, HALEY NICHOLS, DEMI BURDICK, CHELSEY PERRY, MADDIE WALDROP, DASIA YOUNG, EMMA DAVIS AND DAMIAH GRIFFIN.



NUMERICAL ROSTER

No.	Name	Pos.	Ht.	Class	Hometown	(Previous School)
0	*Emma Davis	G	5-10	Jr.	Harrodsburg, Ky.	(Mercer County HS)
2	Sade' Hudson ^(Shaw-day)	G	5-8	Jr.	Memphis, Tenn.	(Trezevant HS)
3	Macy Rippy	G	5-9	So.	Clarksville, Tenn.	(Rossview HS)
5	Seygan Robins ^(Say-ghen)	G	5-10	R-So.	Harrodsburg, Ky.	(Louisville)
10	Raegan Johnson ^(Ray-ghen)	F	6-2	So.	Martin, Tenn.	(Westview HS)
11	Dasia Young ^(Day-shuh)	F	5-11	So.	Jonesboro, Ark.	(Nettleton HS)
13	Demi Burdick	F	6-2	Sr.	Marshall, Ill.	(Marshall HS)
14	Zaire Hicks ^(Zi-air)	G	5-7	R-Jr.	Memphis, Tenn.	(White Station HS)
20	Chelsey Perry	F	6-2	Sr.	Middleton, Tenn.	(Middleton HS)
21	Maddie Waldrop	F	6-2	Sr.	Murray, Ky.	(Murray HS)
22	Damiah Griffin ^(Duh-my-uh)	F	6-0	R-Jr.	Memphis, Tenn.	(White Station HS)
23	Hayley Harrison	F	5-10	R-Fr.	Winchester, Ky.	(George Rogers Clark HS)
31	Kyannah Grant ^(Key-on-uh)	G	5-7	Jr.	Choctaw, Miss.	(Choctaw Central HS)
35	Paige Pipkin	G	5-10	R-Jr.	Henderson, Tenn.	(Chester County HS)
44	Haley Nichols	F	6-0	Fr.	Avon, Ind.	(Avon HS)

*expected to miss the rest of 2020-21 season due to injury



COACHING AND SUPPORT STAFF

Position	Name	Experience	Alma Mater
Head Coach	Kevin McMillan	12th season	Rhodes College, 1989
Assistant Coach	Willie Trevathan	First season	Union, 2000
	Jasmine Newsome	Sixth season	UT Martin, 2014
	David Hart	10th season	UT Martin, 1991
Graduate Assistant	Kelsey Johnson	Second season	Bridgewater State, 2016
	Darby Maggard	First season	Belmont, 2019
Director of Operations	Stacie Evans	11th season	UT Martin, 2004



ROSTER BREAKDOWN

BY CLASS

Seniors
Burdick, Perry, Waldrop
Juniors
Davis, Grant, Griffin (R), Hicks (R), Hudson, Pipkin (R)
Sophomores
Johnson, Rippy, Robins (R), Young
Freshmen
Harrison (R), Nichols

BY HOME STATE

Arkansas: Young
Illinois: Burdick
Indiana: Nichols
Kentucky: Davis, Harrison, Robins, Waldrop
Mississippi: Grant
Tennessee: Griffin, Hicks, Hudson, Johnson, Perry, Pipkin, Rippy

BY POSITION

Guards	Forwards
Davis	Burdick
Grant	Griffin
Hicks	Harrison
Hudson	Johnson
Pipkin	Nichols
Rippy	Perry
Robins	Waldrop
	Young



0

EMMA DAVIS

Junior • G • 5-10 • Harrodsburg, Ky. (Mercer County HS)

GP-GS	PPG	RPG	APG	SPG	BPG	MPG
0-0	0.0	0.0	0.0	0.0	0.0	0.0
FG%: .000 3FG%: .000 FT%: .000						
CAREER HIGHS	Pts: 11	Reb: 3	Asst: 2	Stl: 3	Blk: 1	Min: 20

- Will miss 2020-21 season with leg injury
- Career-high 11 points vs. Mississippi Valley (12/29/18)
- Scored in double figures two times times in career
- Two-time OVC Commissioner's Honor Roll recipient
- Three-time Athletic Director's Honor Roll recipient
- Majoring in special education, K-12



Pronunciation
Shaw-day

2

SADE' HUDSON

Junior • G • 5-8 • Memphis, Tenn. (Trezevant HS)

GP-GS	PPG	RPG	APG	SPG	BPG	MPG
3-0	1.3	1.0	1.3	0.7	0.0	13.0
FG%: .000 3FG%: .000 FT%: .667						
CAREER HIGHS	Pts: 14	Reb: 6	Asst: 4	Stl: 4	Blk: 1	Min: 39

- Played 0+ minutes at Southeast Missouri
- Career-high 14 points vs. Southern Illinois & Lipscomb
- Scored in double figures five times in career
- Member of UT Martin ROTC program
- Contracted with the U.S. Army on Nov. 5, 2020
- Majoring in communications



3

MACY RIPPY

Sophomore • G • 5-9 • Clarksville, Tenn. (Rossvie HS)

GP-GS	PPG	RPG	APG	SPG	BPG	MPG
2-0	0.0	0.0	0.0	0.0	0.0	2.5
FG%: .000 3FG%: .000 FT%: .000						
CAREER HIGHS	Pts: 2	Reb: 4	Asst: 1	Stl: 1	Blk: 0	Min: 13

- Played 0+ minutes at Southeast Missouri
- Played five minutes at #5 Louisville
- Career-high two points vs. Gonzaga/Arkansas/Murray State
- OVC Commissioner's Honor Roll recipient
- Three-time Athletic Director's Honor Roll recipient
- Majoring in business



Pronunciation
Say-ghen

5

SEYGAN ROBINS

R-Sophomore • G • 5-10 • Harrodsburg, Ky. (Mercer County HS)

GP-GS	PPG	RPG	APG	SPG	BPG	MPG
3-3	9.3	1.3	4.7	1.0	0.0	34.0
FG%: .476 3FG%: .364 FT%: 1.000						
CAREER HIGHS	Pts: 16	Reb: 2	Asst: 6	Stl: 2	Blk: 0	Min: 39

- Tallied six points, four assists at Southeast Missouri
- Tallied career-highs with 16 points, six assists at Samford
- Named OVC Newcomer of the Week
- Ranks first in OVC with 5.0 assists per game
- Transferred from Louisville | Redshirted 19-20
- Played in two games last season before season-ending injury
- Former 5-star prospect | 2018 KY Gatorade Player of the Year
- Competed at 2019 USA Basketball Women's 3x3 Championship
- Majoring in special education



Pronunciation
Ray-ghen

10

RAEGAN JOHNSON

Sophomore • F • 6-2 • Martin, Tenn. (Westview HS)

GP-GS	PPG	RPG	APG	SPG	BPG	MPG
1-0	4.0	3.0	0.0	0.0	0.0	6.0
FG%: 1.000 3FG%: .000 FT%: .500						
CAREER HIGHS	Pts: 4	Reb: 4	Asst: 2	Stl: 1	Blk: 0	Min: 11

- Did not play at Southeast Missouri (injury)
- Equaled career-high with four points at #5 Louisville
- Career-high 4 points vs. Arkansas/Murray State/Louisville
- Career-high 4 rebounds vs. Jacksonville State/Murray State
- Athletic Director's Honor Roll recipient
- Majoring in family and consumer science



Pronunciation
Day-shuh

11

DASIA YOUNG

Sophomore • F • 5-11 • Jonesboro, Ark. (Nettleton HS)

GP-GS	PPG	RPG	APG	SPG	BPG	MPG
3-3	7.0	6.3	2.7	0.0	0.7	33.7
FG%: .381 3FG%: .333 FT%: .429						
CAREER HIGHS	Pts: 15	Reb: 9	Asst: 6	Stl: 2	Blk: 1	Min: 38

- Tallied career-high nine rebounds with four points at SEMO
- Career-high 15 points at SIUE
- Started final 19 games last season
- Scored in double figures eight times in career
- Tallied two games with five assists or more
- OVC Commissioner's Honor Roll recipient | AD's Honor Roll
- Majoring in veterinary tech



13

DEMI BURDICK

Senior • F • 6-2 • Marshall, Ill. (Marshall HS)

GP-GS	PPG	RPG	APG	SPG	BPG	MPG
3-0	2.7	2.7	0.7	0.0	0.0	12.7
FG%: .444 3FG%: .000 FT%: .000						
CAREER HIGHS	Pts: 14	Reb: 9	Asst: 4	Stl: 3	Blk: 3	Min: 30

- Scored four points at Southeast Missouri
- Career-high 14 points vs. Murray State
- Career-high nine rebounds vs. Christian Brothers
- Scored in double figures four times in career
- Named to OVC Medal of Honor (4.0 GPA)
- Two-time OVC Commissioner's Honor Roll recipient
- Three-time Athletic Director's Honor Roll recipient
- Majoring in special education



Pronunciation
Zi-air

14

ZAIRE HICKS

R-Junior • G • 5-7 • Memphis, Tenn. (White Station HS)

GP-GS	PPG	RPG	APG	SPG	BPG	MPG
1-0	2.0	0.0	0.0	1.0	0.0	5.0
FG%: 1.000 3FG%: .000 FT%: .000						
CAREER HIGHS	Pts: 19	Reb: 7	Asst: 6	Stl: 4	Blk: 1	Min: 39

- Made season debut with two points in five minutes at SEMO
- Played in two games last season before season-ending injury
- Career-high 19 points vs. UAH/Murray State
- Career-high six assists vs. Tennessee State/Murray State
- Scored in double figures 18 times in career
- Athletic Director's Honor Roll recipient
- Majoring in biology



20

CHELSEY PERRY

Senior • F • 6-2 • Middleton, Tenn. (Middleton HS)

GP-GS	PPG	RPG	APG	SPG	BPG	MPG
3-3	28.3	7.3	2.0	1.7	1.3	36.0

FG%: .534 | 3FG%: .500 | FT%: .833

CAREER HIGHS Pts: 42 Reb: 14 Asst: 6 Stl: 5 Blk: 8 Min: 44

- Tallied 28 points, seven rebounds at Southeast Missouri
- Named OVC Player of the Week (ninth of career)
- Ranks first in OVC and third in NCAA with 28.3 points per game
- Named to Naismith, Becky Hammon and McClain Award watch lists
- OVC Preseason Player of the Year | 2020 OVC Player of the Year
- C-H 42 pts vs. Lipscomb | C-H 14 rebs at Austin Peay
- Scored in double figures 72 times | 31 w/ 20+ | 10 w/ 30+
- Needs four blocks to break program-record of 203 (199 blocks)
- Majoring in exercise science and wellness



21

MADDIE WALDROP

Senior • F • 6-2 • Murray, Ky. (Murray HS)

GP-GS	PPG	RPG	APG	SPG	BPG	MPG
3-3	6.0	7.0	2.3	1.0	0.3	28.3

FG%: .368 | 3FG%: .000 | FT%: .444

CAREER HIGHS Pts: 26 Reb: 16 Asst: 6 Stl: 4 Blk: 4 Min: 41

- Tallied six points, seven rebounds at Southeast Missouri
- 2x Preseason All-OVC | 2020 All-OVC first team
- Career-high 26 points at Morehead State
- Needs 162 points to reach 1,000 points (838)
- Ranks sixth in UT Martin history with 669 career rebounds
- Scored in double figures 34 times in career | 7 w/ 20+
- Rebounded in double figures 18 times | 11 double-doubles
- 3x OVC Commissioner's Honor Roll | Medal of Honor
- Majoring in mathematics



Pronunciation
Duh-my-uh

22

DAMIAH GRIFFIN

R-Junior • F • 6-0 • Memphis, Tenn. (White Station HS)

GP-GS	PPG	RPG	APG	SPG	BPG	MPG
3-0	3.3	1.0	0.3	0.0	0.0	9.0

FG%: .833 | 3FG%: .000 | FT%: .000

CAREER HIGHS Pts: 25 Reb: 10 Asst: 3 Stl: 5 Blk: 2 Min: 46

- Scored two points at Southeast Missouri
- Played in 12 games before suffering season-ending injury
- Career-high 25 points and 10 rebounds vs. Louisville
- Scored in double figures 20 times in career
- One career double-double | Six games with 3+ steals
- OVC Commissioner's Honor Roll | 3x AD's Honor Roll
- Majoring in exercise science and wellness



23

HAYLEY HARRISON

R-Freshman • G/F • 5-10 • Winchester, Ky. (George Rogers Clark HS)

GP-GS	PPG	RPG	APG	SPG	BPG	MPG
3-3	6.3	2.0	0.7	0.7	0.0	21.0

FG%: .500 | 3FG%: .750 | FT%: .750

CAREER HIGHS Pts: 10 Reb: 3 Asst: 1 Stl: 1 Blk: 0 Min: 18

- Tallied five points, three rebounds at Southeast Missouri
- Scored career-high 10 points, 2 rebs at #5 Louisville
- Redshirted 2019-20
- Did not see game action in 2019-20 due to injury
- Averaged 16.4 ppg and shot 39.4% from three as HS senior
- Named to Fall 2020 Athletic Director's Academic Honor Roll
- Majoring in graphic design



Pronunciation
Key-on-uh

31

KYANNAH GRANT

Junior • G • 5-7 • Choctaw, Miss. (Choctaw Central HS)

GP-GS	PPG	RPG	APG	SPG	BPG	MPG
1-0	2.0	0.0	1.0	0.0	0.0	3.0

FG%: .000 | 3FG%: .000 | FT%: 1.000

CAREER HIGHS Pts: 18 Reb: 8 Asst: 9 Stl: 5 Blk: 2 Min: 46

- Made season debut with two points in three minutes at SEMO
- Career-high 18 points vs. Eastern Illinois
- Scored in double figures seven times in career
- Eight games with 5+ assists | Six games with 3+ steals
- One of 18 Native American Division I WBB players
- 2x OVC Commissioner's Honor Roll | 3x AD's Honor Roll
- Majoring in biology, pre-med



35

PAIGE PIPKIN

R-Junior • G • 5-7 • Henderson, Tenn. (Chester County HS)

GP-GS	PPG	RPG	APG	SPG	BPG	MPG
1-0	2.0	1.0	2.0	1.0	0.0	18.0

FG%: .250 | 3FG%: .000 | FT%: .000

CAREER HIGHS Pts: 4 Reb: 3 Asst: 4 Stl: 1 Blk: 0 Min: 19

- Played 18 minutes, tallying two points, two assists at SEMO
- Action against SEMO was first game action in 766 days
- Did not see game action in 2019-20 due to injury
- Played four games in four seasons
- Career-high four points vs. Southern Illinois/IUPUI
- 2x OVC Commissioner's Honor Roll | 3x AD's Honor Roll
- Majoring in sports business



44

HALEY NICHOLS

Freshman • F • 6-0 • Avon, Ind. (Avon HS)

GP-GS	PPG	RPG	APG	SPG	BPG	MPG
0-0	0.0	0.0	0.0	0.0	0.0	0.0

FG%: .000 | 3FG%: .000 | FT%: .000

CAREER HIGHS Pts: 0 Reb: 0 Asst: 0 Stl: 0 Blk: 0 Min: 0

- Did not play against Samford (injury rehab)
- Tallied 1,125 points, 725 rebounds in high school
- Averaged 14.2 points, 9.2 rebounds as HS senior
- Named to Fall 2020 Athletic Director's Academic Honor Roll
- Majoring in biology

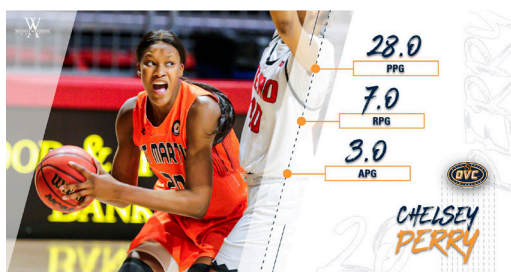


OVC BANDS TOGETHER TO WEAR NCAA UNITY PATCH

• This season you will see Ohio Valley Conference teams, and other teams around the country, sporting a Unity Patch on uniforms. The patch is part of a Unity Pledge and Logo approved by the NCAA's three divisional Student-Athlete Advisory Committees (SAAC) and the NCAA Board of Governors Student-Athlete Engagement Committee.

• They are symbolic gestures to continue generating stronger unity among the NCAA's 1100-plus schools and nearly 500,000 student-athletes. The logo includes three different colored hands holding one another's wrists inside a circle with "United As One" at the bottom.

QUICK HITS



CHELSEY PERRY EARNS 10TH CAREER OVC PLAYER OF THE WEEK HONOR

• For the 10th time in her career and second time in as many weeks, senior forward Chelsey Perry was named OVC Player of the Week after a standout performance against Southeast Missouri in the league opener.

• Perry has become accustomed to earning the league's top weekly honor over the last two seasons, claiming 10 for her career. Over the last 18 weeks – dating back to last season – Perry has claimed over half of the league's player of the week honors. For comparison, only two other players during that same time span have posted multiple honors. Perry currently ranks tied for second in school history in weekly honors behind Jasmine Newsome (15) and tied with Heather Butler (10).

• Perry showed why she was picked as the preseason favorite to repeat as OVC Player of the Year in the league opener at Southeast Missouri last Friday, leading all scorers for the third time this season. Perry tallied 28 points, seven rebounds, three assists and one steal in 39 minutes of action en route to a 61-58 road victory. She shot 52.9 percent from the field and 80.0 percent from the free throw line.

• The prolific scorer has proven that her junior campaign was no fluke, scoring no fewer than 26 points in any contest this season. Perry currently ranks third nationally and first in the OVC with 28.3 points per game.



ELEVEN SKYHAWK WOMEN'S BASKETBALL STUDENT-ATHLETES EARN ACADEMIC HONORS

• Eleven women's basketball student-athletes garnered Athletic Director's Honor Roll status for the Fall 2020 semester, recognizing those who compile at least a 3.0 GPA. Overall, the UT Martin student-athletes posted a record-breaking 3.28 Grade Point Average for the fall term.

• Demi Burdick, Emma Davis, Kyannah Grant, Damiah Griffin, Hayley Harrison, Haley Nichols, Paige Pipkin, Seygan Robins, Maddie Waldrop and Dasia Young were each recognized for their work academically. Both Davis and Waldrop posted a perfect 4.0 GPA.

PERRY CLOSING ON CAREER BLOCK RECORD

• UT Martin senior forward Chelsey Perry is closing in on becoming the program's all-time leader in blocked shots. Perry trails former standout Mary Kate Long's (1985-89) long-standing record of 203 rejections by four blocks. She tallied 86 blocks last season - including a record-tying eight block contest against IUPUI.

UT MARTIN CAREER BLOCKS		
Blocks	Player	Year
1. 203	Mary Kate Long	1985-89
2. 199	Chelsey Perry	2017-Present
3. 155	Rickiesha Bryant	2010-13
4. 93	Chastity Bohannon	1997-00
5. 90	Zabrina Harris	1996-00



OVC CAREER BLOCKS		
Blks	Player	Year
1. 291	Sally McCabe, Belmont	2014-18
2. 287	Brittany Pittman, Morehead State	2007-09
3. 264	Brooke Todd, Morehead State	2014-18
4. 223	Gerlonda Hardin, Austin Peay	2000-04
5. 205	Tasha Gales, Morehead State	1999-03
6. 202	Anacia Wilkinson, Tennessee Tech	2015-20
7. 199	Chelsey Perry, UT Martin	2017-21
8. 194	Melinda Clayton, Tennessee Tech	1986-90
9. 190	Kay Wilbanks, Middle Tennessee	1984-86
10. 185	Rachel Galligan, Eastern Illinois	2005-09
185	Jane Lockin, Western Kentucky	1979-82

UT MARTIN FROM DEEP

• UT Martin has one of the longest streaks in the nation with a made three-pointer heading into the 2020-21 season. The Skyhawks have made a three-pointer in 362 consecutive games, a streak which dates back to Feb. 3, 2009 against Austin Peay and ranks eighth nationally.

Program	Total
1. Iowa State (Feb. 1995-Pres.)	805
2. Chattanooga (Dec. 16, 1999-Pres.)	656
3. Milwaukee (2002-Pres.)	555
4. Bowling Green (Feb. 12, 2005-Pres.)	495
5. Austin Peay (2006-Pres.)	416
6. UMass (Jan. 9, 2007-Pres.)	413
7. UC Davis (2003-Pres.)	409
8. UT Martin (Feb. 3, 2009-Pres.)	362
9. Western Carolina (Nov. 20, 2009-Pres.)	337

NEW YEAR BRINGS STRONG PLAY

• Under the direction of head coach Kevin McMillan, UT Martin has posted a 153-51 record when the calendar switches to a new year over the past 11 seasons - including a 65-25 in January, 66-14 in February and 22-12 in March.

THAT 70's SHOW

• 70 has proven to be the magic number for UT Martin in recent history. Under the direction of head coach Kevin McMillan, the Skyhawks are 176-34 when eclipsing the 70-point plateau. When the Skyhawks have scored 80 points or more, they are 111-7 during the same span.

WALDROP APPROACHING 1,000 POINT CLUB

• Senior forward Maddie Waldrop is steadily climbing up the program's career scoring list and sits just outside the exclusive 1,000 point club at UT Martin. Waldrop enters the contest needing 168 points to become the 17th player to reach 1,000 points and join fellow teammate Chelsey Perry on the list.



Player	Points
1. Heather Butler	2,865
2. Jasmine Newsome	2,566
3. Mary Kate Long	1,754
4. Zabrina Harris	1,723
5. Tara Tansil	1,702
6. Chelsey Perry	1,562
7. Pat Head Summitt	1,405
8. Andreika Jackson	1,377
9. Gwen Long	1,345
10. Emanyte Robertson	1,253
11. Amy Watson	1,245
12. Phyllisha Mitchell	1,243
13. Angela Reaves	1,218
14. Ashia Jones	1,178
15. Gina Warren	1,130
16. Crystal Fuller	1,028
- Maddie Waldrop	832

SKYHAWK DOUBLE-DOUBLES

• The current Skyhawk roster has combined to achieve 23 career double-doubles, led by 11 from seniors Maddie Waldrop and Chelsey Perry.

Maddie Waldrop (11)	
Eastern Illinois (2/17/18)	11 pts, 12 rebs
at Belmont (2/2/19)	20 pts, 10 rebs
Tennessee State (3/2/19)	20 pts, 16 rebs
vs. Morehead State (3/8/19)	10 pts, 12 rebs
at Southern Illinois (12/3/19)	16 pts, 14 rebs
at Austin Peay (1/4/20)	22 pts, 13 rebs
Belmont (1/11/20)	12 pts, 10 rebs
Tennessee Tech (2/6/20)	19 pts, 12 rebs
Jacksonville State (2/8/20)	16 pts, 11 rebs
Tennessee Tech (2/20/20)	18 pts, 11 rebs
at Jacksonville State (2/22/20)	32 pts, 11 rebs

Chelsey Perry (11)	
at Eastern Illinois (1/18/18)	16 pts, 11 rebs
Austin Peay (1/12/19)	13 pts, 11 rebs
at Eastern Kentucky (1/17/19)	25 pts, 12 rebs
Southeast Missouri (2/14/19)	17 pts, 11 rebs
Lipscomb (12/16/19)	42 pts, 10 rebs
at Murray State (1/2/20)	20 pts, 10 rebs
at Austin Peay (1/4/20)	28 pts, 14 rebs
Murray State (1/16/20)	30 pts, 11 rebs
Austin Peay (1/18/20)	25 pts, 12 rebs
at Eastern Kentucky (1/30/20)	15 pts, 11 rebs
at Samford (12/8/20)	31 pts, 11 rebs

Damiah Griffin (1)	
No. 6 Louisville (12/19/19)	25 pts, 10 rebs

QUICK HITS



McMILLAN CAREER VICTORIES

McMILLAN JOINS EXCLUSIVE GROUP AND RECEIVES WBCA VICTORY CLUB HONOR

• Skyhawk head coach Kevin McMillan joined an exclusive group back on Dec. 16, 2019 when he notched his 200th career victory against Lipscomb. McMillan became the first basketball coach in UT Martin history (men's or women's) to reach the milestone while ranking as just the sixth in OVC history to tally 200 or more career victories - joining Larry Joe Inman (545), Dave Loos (420), Bill Worrell (408), Cal Luther (319) and E.A. Diddle (296).

• The Women's Basketball Coaches Association recognized McMillan as a 2020 WBCA Victory Club honoree. The WBCA Victory Club honor is bestowed annually on each WBCA-member head coach who achieves a milestone of 200, 300, 400, 500 or more career victories.

McMILLAN CLIMBING OVC LEADERBOARD

• With a career record of 220-137, UT Martin head coach Kevin McMillan currently ranks third in total wins in Ohio Valley Conference history. McMillan also ranks first amongst active coaches.

Coch (Program)	W	L	%
1. Larry Inman (MTSU/EKU/TSU)	545	352	.606
2. Bill Worrell (TTU)	408	190	.682
3. Kevin McMillan (UTM)	220	137	.616
4. Lewis Bivens (MTSU)	182	103	.639
5. Marynell Meadors (TTU)	181	100	.730
6. Teresa Phillips (TSU)	146	155	.485
7. Ed Arzen (SEMO)	144	155	.482
8. Brady Sallee (EIU)	136	116	.540
9. Mickey Wells (MOR)	132	70	.653
10. Chrissy Roberts (EKU)	122	166	.419

SKYHAWKS OVER 30

• UT Martin has seen 13 different players score 30 points or more in the program's Division I history. Former Skyhawk Heather Butler leads all players with 18 30-point outings while Jasmine Newsome ranked second with 13. Skyhawk senior Chelsey Perry leads the team with 10 30-point outings.

Samford (11/21/19)	32 points
Lipscomb (12/16/19)	42 points
Belmont (1/11/20)	34 points
Murray State (1/16/20)	30 points
at Eastern Illinois (1/23/20)	35 points
Tennessee Tech (2/6/20)	37 points
at Southeast Missouri (2/13/20)	36 points
at Jacksonville State (2/22/20)	32 points
Southeast Missouri (2/29/20)	38 points
at Samford (12/8/20)	31 points

PERRY FILLS THE STAT SHEET

• In the program's 50-season history, junior forward Chelsey Perry is the first player in UT Martin women's basketball history to eclipse 1,000 points, 500 rebounds, 100 blocks, 100 steals and 100 assists in a career.

HOME COURT ADVANTAGE

• UT Martin has tallied 257 home victories since 1995, making the friendly confines of the Elam Center a daunting place for visiting teams. During McMillan's tenure the Skyhawks have posted a 116-25 record at home since taking over as head coach, posting an .822 winning percentage. The Skyhawks have also posted a 82-11 home record against OVC foes during the same span.

UT MARTIN RECORD AT HOME UNDER McMILLAN

2018-19.....	14-1	2010-11.....	10-0
2019-20.....	13-1	2012-13.....	10-5
2011-12.....	12-1	2014-15.....	10-2
2013-14.....	11-1	2016-17.....	7-6
2015-16.....	11-1	2009-10.....	7-4
2017-18.....	11-3		

SKYHAWKS MATCH UP AGAINST THE BEST

UT Martin has never shyed away from playing some of the best teams in the country under head coach Kevin McMillan. Since taking over in 2009-10, McMillan and the Skyhawks have played 25 nationally ranked opponents. This season the Skyhawks are primed to matchup against No. 5 Louisville.

NATIVE AMERICAN HERITAGE

• UT Martin junior guard Kyannah Grant is one of just 18 Native Americans on Division-I rosters throughout the country as populated by an independent study.

School	Players
Arkansas.....	Chelsea Dungee
Buffalo.....	Summer Hemphill
Cincinnati.....	Milan Schimmel
East Tennessee State.....	E'Lease Stafford
Green Bay.....	Hailey Oskey
Illinois.....	Aaliyah Nye
Missouri State.....	Brice Calip
Montana State.....	Kola Bad Bear
Northern Arizona.....	JJ Nakai
Oklahoma State.....	Lexy Keys
Rice.....	Katelyn Crosthwait
San Jose' State.....	Analys Benally
South Dakota.....	Aspen Williston
Tulsa.....	Maddie Bittle
USC.....	Alissa Pili
UT Martin.....	Kyannah Grant
Utah State.....	Shyla Latone
Valparaiso.....	Grace White

BURDICK EARNS OVC MEDAL OF HONOR

• Senior forward Demi Burdick was one of 21 Skyhawk student-athletes to be recognized as an OVC Medal of Honor recipient for achieving a perfect 4.0 Grade Point Average in the 2019-20 academic year. Burdick is majoring in special education.

EIGHT SKYHAWKS NAMED TO OVC COMMISSIONER'S HONOR ROLL

• The Skyhawk women's basketball team featured eight players which were named to the OVC Commissioner's Honor Roll for the 2019-20 academic year.

• To be listed, recipients must have achieved at least a 3.25 Grade Point Average, have been eligible and on the team throughout the competitive season in their NCAA-sponsored sport(s) and used a season of competition.

• Demi Burdick, Emma Davis, Kyannah Grant, Damiah Griffin, Chelsey Perry, Paige Pipkin, Macy Rippey and Maddie Waldrop were honored.

COLLEGE INSIDER MID-MAJOR TOP 25

Team	Rec.	Pts.
1. Missouri State (29)	3-1	766
2. Gonzaga	3-2	730
3. South Dakota (1)	3-1	665
4. FGCU (1)	4-2	663
5. Central Michigan	2-1	602
6. IUPUI	4-1	594
7. BYU	3-0	537
8. South Dakota State	3-2	493
9. Drake	3-2	486
10. James Madison	4-2	480
11. UT Martin	2-1	459
12. Ohio	2-1	419
13. Maine	2-0	335
14. Milwaukee	5-1	316
15. Buffalo	3-2	304
16. UC Davis	1-0	272
17. Northern Iowa	3-2	258
18. Drexel	2-1	224
19. North Dakota State	3-1	206
20. Stephen F. Austin	3-2	151
21. Portland	3-2	104
22. Delaware	3-0	101
23. Bowling Green	4-1	96
24. Idaho State	3-1	93
25. Troy	3-2	81

UT MARTIN ANALYTICAL SUMMARY

The plus/minus stat reflects how the team did while that player is on the court. If a player is a +5, it means his team outscored the opponent by five points while he was on the court. If he has a -3, then the opposing team outscored his team by three points while he was on the court.

Player	Season +/-	Avg/Gm	Best +/- Performance
#0 - Emma Davis (0)	-	-	-
#2 - Sade' Hudson (3)	-26	-8.6	-3 at Samford (12/8)
#3 - Macy Rippey (2)	+0	+0.0	+3 at #5 Louisville (12/6)
#5 - Seygan Robins (3)	+3	+1.0	+13 at Southeast Missouri (12/18)
#10 - Raegan Johnson (1)	-3	-3.0	-3 at #5 Louisville (12/6)
#11 - Dasia Young (3)	+5	+1.7	+4 at Southeast Missouri (12/18)
#13 - Demi Burdick (3)	-6	-2.0	+3 at Samford (12/8)
#14 - Zaire Hicks (1)	+1	+1.0	+1 at Southeast Missouri (12/18)
#20 - Chelsey Perry (3)	+5	+1.7	+11 at Southeast Missouri (12/18)
#21 - Maddie Waldrop (3)	-9	-3.0	+11 at Samford (12/8)
#22 - Damiah Griffin (3)	-5	-1.7	+3 at Southeast Missouri (12/18)
#23 - Hayley Harrison (3)	+4	+1.3	+10 at Samford (12/8)
#31 - Kyannah Grant (1)	-8	-8.0	-8 at Southeast Missouri (12/18)
#35 - Paige Pipkin (1)	+4	+4.0	+4 at Southeast Missouri (12/18)
#44 - Haley Nichols (0)	-	-	-

QUICK HITS



UT MARTIN MAKES HISTORY BY RECEIVING VOTE IN PRESEASON COACHES POLL

• For the first time in program history, UT Martin garnered a vote in the USA TODAY Sports Preseason Coaches Poll. While this marks the first time that the Skyhawks have garnered preseason votes in the Coaches Poll, UT Martin did receive six votes in the final rankings during the 2013-14 OVC championship season.

SKYHAWK RANKED 10TH IN MID-MAJOR TOP 25

• UT Martin opened the season ranked 10th in the CollegiateInsider.com Mid-Major Top 25. The Skyhawks ranked as high as 25th in the weekly poll last season while receiving votes numerous times. This is UTM's highest preseason ranking.

SKYHAWKS TABBED AS PRESEASON FAVORITES

• Fresh off an Ohio Valley Conference regular season championship, UT Martin was tabbed to repeat as champions in the annual preseason poll of the league's head coaches and sports information directors. The Skyhawks garnered 22 of the possible 24 first place votes while tallying 242 points overall.

2020-21 OVC Predicted Order of Finish

1. UT Martin (22 first-place votes) - 242

2. Belmont - 210
3. Southeast Missouri (2 first-place votes) - 206
4. Tennessee Tech - 172
5. Eastern Illinois - 157
6. Jacksonville State - 129
7. Morehead State - 119
8. Murray State - 106
9. Austin Peay - 104
10. Eastern Kentucky - 73
11. SIUE - 36
12. Tennessee State - 29

• For the seventh consecutive year, members of the league's media partners conducted its Preseason OVC Media Poll and picked the Skyhawks to win the league with 10 of 13 first place votes and 149 points overall.

2020-21 OVC Media Poll

1. UT Martin (10 first-place votes) - 149 points

2. Belmont (1) - 137
3. Southeast Missouri (2) - 132
4. Tennessee Tech - 114
5. Eastern Illinois - 105
6. Austin Peay - 85
7. Murray State - 80
8. Jacksonville State - 76
9. Morehead State - 48
10. Eastern Kentucky - 43
11. Tennessee State - 24
12. SIUE - 21



PERRY NAMED TO WOMEN'S JERSEY MIKE'S NAISMITH TROPHY WATCH LIST

• Skyhawk senior forward Chelsey Perry has been named to the 2021 Women's Jersey Mike's Naismith Trophy Watch List, announced by the Atlanta Tipoff Club. Perry is one of 50 women's players representing 11 conferences.

• The award goes to the best player in women's college basketball annually.

BASKETBALL HALL OF FAME AND WBCA NAMES PERRY TO 2021 McCLAIN AWARD WATCH LIST

• The Naismith Memorial Basketball Hall of Fame and the Women's Basketball Coaches Association has named Skyhawk forward Chelsey Perry as one of 20 watch list candidates for the 2021 Katrina McClain Award.

• Named for the two-time All-American and 1987 National Player of the Year Katrina McClain, the annual award in its fourth year, recognizes the top power forward in college basketball.

PERRY NAMED TO BECKY HAMMON MID-MAJOR PLAYER OF THE YEAR WATCH LIST

• UT Martin star Chelsey Perry has been tabbed one of 25 student-athletes named to the preseason watch list for the 2021 Becky Hammon Mid-Major Player of the Year Award presented by Her Hoop Stats.

• Perry was one of five finalists for the award last season after ranking in the top one percent in Division I usage and block rate while being in the top 10 percent in scoring efficiency according to Her Hoop Stats.

• The Becky Hammon Award was first awarded in 2020 and goes to the top college basketball players from one of the 26 conferences deemed to be "mid-major".

PERRY NAMED PRESEASON OVC PLAYER OF THE YEAR BY BOTH LEAGUE AND MEDIA

• Senior forward Chelsey Perry swept the preseason honors by both the league's head coaches and sports information directors, along with the OVC media panel by being named the 2020 OVC Preseason Player of the Year.

• This marks just the fourth time that a Skyhawk has been tabbed as the league's Preseason Player of the Year, joining UT Martin Hall of Famers Zabrina Harris (1999-2000), Heather Butler (2012-13) and Jasmine Newsome (2013-14).

PERRY GARNERS POSTSEASON ACCOLADES

- WBCA Coaches All-American Hon. Mention
- Bettye Giles Female Athlete of the Year
- TSWA Women's Basketball Player of the Year
- Becky Hammon Mid-Major Player of the Year Finalist
- WBCA Coaches' All-American Regional Finalist
- OVC Player of the Year



PERRY AND WALDROP NAMED TO PRESEASON ALL-OVC SQUADS

• The senior duo of Chelsey Perry and Maddie Waldrop were recognized by the OVC as Preseason All-OVC honorees as voted on by the league's head coaches and sports information directors.

• Perry continues to add to her stellar collegiate résumé with her third consecutive Preseason All-OVC honor. The 2020 OVC Player of the Year played and started in all 32 games for the Skyhawks last season where she averaged 23.1 points, 7.0 rebounds, 2.7 blocks, 2.0 assists and 1.6 steals per game. She ranked first nationally in field goals made (286), second in total points (740) and third in both points per game (23.1) and field goal attempts (386) while ranking 11th in blocks (86) and 17th in blocks per game (2.69). Her 740 points ranked first amongst all collegiate scorers in the state of Tennessee, earning her TSWA Women's Basketball Player of the Year honors.

• A two-time Preseason All-OVC honoree, Waldrop claimed All-OVC first team honors last season after averaging 12.7 points, 7.8 rebounds, 2.7 assists and 1.1 steals per game. She ranked amongst OVC leaders in defensive rebounds (5.9, fourth), field goal percentage (48.6, fifth), rebounding (7.8 rpg, seventh) and scoring (12.7 ppg, eighth). Waldrop scored in double figures 19 times while eclipsing 20 points or more on four occasions.

TWIN TOWERS

• The senior forward duo of Chelsey Perry and Maddie Waldrop were dominant last season in OVC action with the duo combining to score 54.2 percent of the team's total offensive output. Perry (26.6 ppg) and Waldrop (15.8 ppg) have combined to score 42.4 of the team's 78.1 points in OVC play.

PERRY SETS RECORD FOR OVC WEEKLY HONORS

• Chelsey Perry was named OVC Player of the Week an OVC-record eight times last season. She is the first OVC player to tally eight player of the week honors in the same season, surpassing Jasmine Newsome's seven in 2012-13.

SKYHAWKS OVER 30

• UT Martin has seen 13 different players score 30 points or more in the program's Division I history. Former Skyhawk Heather Butler leads all players with 18 30-point outings while Jasmine Newsome ranked second with 13. Skyhawk senior Chelsey Perry leads the team with 10 30-point outings.

Tiffany Brundige (1)
at Eastern Kentucky [2/22/03] 30 points

Heather Butler (18)
at Morehead State [12/2/10] 31 points
Murray State [12/22/10] 37 points
at Tennessee State [1/2/12] 35 points
Tennessee State [1/30/12] 42 points
Eastern Illinois [2/11/12] 32 points
at Murray State [2/16/12] 41 points
Tennessee Tech [3/3/12] 35 points
Austin Peay [1/7/13] 32 points
at Tennessee State [2/18/13] 31 points
vs. Notre Dame [3/24/13] 37 points
Quinnipiac [11/16/13] 31 points
Missouri [11/23/13] 36 points
Evansville [11/25/13] 34 points
at Murray State [1/4/14] 33 points
at Austin Peay [1/6/14] 30 points
Tennessee Tech [1/20/14] 35 points
at Eastern Kentucky [2/3/14] 44 points
Austin Peay [3/1/14] 44 points

Chanda Cordova (1)
Middle Tennessee [1/27/96] 34 points

Tessa Fields (1)
at Austin Peay [1/24/98] 30 points

Crystal Fuller (1)
at Jacksonville State [1/26/08] 35 points

Zabrina Harris (2)
at Cal Poly [12/16/97] 33 points
Tennessee State [1/23/99] 31 points

Andreika Jackson (2)
Murray State [1/18/05] 33 points
Eastern Illinois [2/11/06] 30 points

Ashia Jones (10)
at Miami [12/15/14] 35 points
Eastern Kentucky [1/8/15] 36 points
Morehead State [1/10/15] 30 points
Jacksonville State [1/17/15] 30 points
Southeast Missouri [1/24/15] 30 points
at Murray State [1/31/15] 44 points
at Austin Peay [2/4/15] 34 points
Murray State [2/28/15] 36 points
vs. Eastern Illinois [3/4/15] 30 points
vs. Belmont [3/6/15] 39 points

Jasmine Newsome (13)
at Jacksonville State [1/15/11] 30 points
Eastern Illinois [1/22/11] 35 points
Morehead State [2/26/11] 33 points
at Southern Miss [1/16/11] 39 points
at Tennessee State [1/2/12] 37 points
at Southeast Missouri [1/16/13] 36 points
at Tennessee State [2/18/13] 31 points
at Murray State [2/23/13] 31 points
Eastern Kentucky [3/7/13] 41 points
vs. Tennessee Tech [3/9/13] 34 points
Quinnipiac [11/16/13] 44 points
at Austin Peay [1/6/14] 37 points
Tennessee Tech [1/20/14] 36 points

Kelly Pendelton (1)
at Austin Peay [1/10/02] 36 points

Chelsey Perry (10)
Samford [11/21/19] 32 points
Lipscomb [12/16/19] 42 points
Belmont [11/11/20] 34 points
Murray State [1/16/20] 30 points
at Eastern Illinois [1/23/20] 35 points
Tennessee Tech [2/6/20] 37 points
at Southeast Missouri [2/13/20] 36 points
at Jacksonville State [2/22/20] 32 points
Southeast Missouri [2/29/20] 38 points
at Samford [12/8/20] 31 points

Kendal Spray (4)
at Eastern Illinois [1/18/17] 33 points
North Carolina A&T [11/30/17] 30 points
Rhodes College [12/7/17] 35 points
Murray State [2/3/18] 34 points

Tara Tansil (2)
Morehead State [2/19/94] 31 points
Southeast Missouri [2/25/95] 30 points

QUICK HITS

HANG ANOTHER BANNER

• With a 16-2 campaign, the Skyhawks notched their sixth OVC regular season championship in program history and first since the 2015-16 campaign. Overall, UT Martin has won league titles in 1998-99, 2011-12, 2013-14, 2014-15, 2015-16 and 2019-20.

UT MARTIN IN THE POSTSEASON

• UT Martin is coming off a season in which the squad earned its eighth postseason berth in the past nine years with an automatic bid into the Postseason Women's NIT before its cancelation, joining four consecutive NCAA Tournament appearances from 2011-14 and a pair of WNIT berths in 2015, 2016 and 2018. The Skyhawks recent success has been unprecedented after notching just one previous postseason berth in the program's Division I history coming in 1999.

OVC SINGLE-SEASON LEADERS

• Chelsey Perry ranked amongst some of the Ohio Valley Conference's all-time elite scorers. With 479 points through 18 conference games, Perry ranked first in conference-only scoring dating back to the 2000-01 season.

Player	Single-Season Scoring (6P)
1. Chelsey Perry, UT Martin (2019-20)	479 (18)
2. Ashley Hayes, Murray State (2008-09)	450 (18)
3. Joi Scott, Murray State (2006-07)	446 (19)
4. Emily Christian, Tennessee Tech (2005-06)	433 (20)
5. Heather Butler, UT Martin (2013-14)	427 (16)
Ashia Jones, UT Martin (2014-15)	427 (16)

700-POINT CLUB

• UT Martin forward Chelsey Perry joined historic company of Skyhawk greats to eclipse 700 points in a single season last year after ranking second in the country with 740 points. The only other players to accomplish the feat are fellow former OVC Players of the Year Heather Butler, Ashia Jones and Jasmine Newsome.

Player	Scoring Total
1. Ashia Jones (2014-15)	772
2. Jasmine Newsome (2012-13)	770
3. Heather Butler (2012-13)	762
4. Heather Butler (2011-12)	760
5. Heather Butler (2013-14)	754
6. Chelsey Perry (2019-20)	740

THE 20-WIN CLUB

• UT Martin notched its 10th 20-win season in program history and seventh under Kevin McMillan since 2010-11. The program record for total wins is 24 set during 2013-14 campaign.

20-Win Seasons		
Rank	Season	Wins
1.	2013-14	24-8
2.	2018-19	23-9
4.	2019-20	22-9
	1972-73	22-8
	1998-99	22-9
	2014-15	22-11
8.	2015-16	21-8
	2010-11	21-11
10.	1971-72	20-8

DECORATED COACHING STAFF

• The UT Martin coaching staff boasts a ton of experience and accolades dating back to their respective playing careers. Assistant coach Jasmine Newsome (2012 and 2013) and graduate assistant Darby Maggard (2019) combined for three OVC Player of the Year awards.

• Newsome's connection to UT Martin began as a player from 2010-14 before joining McMillan's coaching staff in 2015-16. Newsome was a four-time ALL-OVC first team selection, two-time OVC Player of the Year and three-time OVC Defensive Player of the Year. Starting in all 131 games of her career, she became the school's first Associated Press All-American in 2013, helping lead UT Martin to its first four NCAA Tournament appearances. She ranks second in OVC history with 2,566 points while setting the Skyhawk school record with 681 career assists.

• Maggard played the role of spoiler in her college career at Belmont, defeating the Skyhawks twice to clinch NCAA Tournament berths in four straight seasons. The 2019 OVC Player of the Year was also a four-time All-OVC first team honoree and 2019 State Farm College 3-Point Championship winner. She scored 2,031 career points while becoming the only player in NCAA history to dish out over 650 assists and make over 400 three-pointers.

SKYHAWK BIRTHDAYS

Player	Birthday
Haley Nichols	February 2, 2002
Maddie Waldrop	February 23, 1999
Seygan Robins	February 17, 1999
Dasia Young	March 3, 2001
Damiah Griffin	March 18, 1999
Emma Davis	May 25, 2000
Chelsey Perry	June 7, 1999
Hayley Harrison	July 2, 2001
Zaire Hicks	August 15, 1999
Kyannah Grant	August 25, 2000
Paige Pipkin	October 4, 1998
Raegan Johnson	October 25, 2000
Sade' Hudson	November 8, 1999
Macy Rippey	December 29, 2000
Demi Burdick	December 31, 1998

FANS PACK THE ELAM CENTER

• UT Martin ranked first amongst OVC programs in home attendance with 24,743 people coming through the turnstiles of the Kathleen and Tom Elam Center last season. Hosting a total of 14 home games last season, the Skyhawks averaged 1,767 people per contest, ranking above the national average of 1,604 and league average of 992.

Ohio Valley Conference Attendance			
School	Games	Att.	Avg.
UT Martin	14	24,743	1,767
Tennessee Tech	13	19,932	1,533
Murray State	14	17,797	1,271
Belmont	13	15,743	1,211
Morehead State	15	17,404	1,160
Tennessee State	16	12,718	795
Eastern Illinois	14	10,755	768
Southeast Missouri	13	9,740	749
SIUE	15	10,986	732
Austin Peay	13	8,145	627
Eastern Kentucky	14	7,981	570
Jacksonville State	14	6,791	485

QUICK HITS

2021 OVC BASKETBALL CHAMPIONSHIP TO RETURN TO EVANSVILLE

- For the fourth straight year, the Ohio Valley Conference Board of Presidents has awarded the 2021 OVC Women's Basketball Championship to the Ford Center in Evansville, Ind.
- The "OVC Basketball Championship Presented by Kentucky Wild" is scheduled for March 3-6 and will feature eight women's teams.
- After a recommendation from the women's basketball coaches and approval by the Council of OVC Directors of Athletics and OVC Board of Presidents, the women's bracket will switch from a traditional (1 vs. 8, 2 vs. 7, etc.) format to a merit-based format that gives the No. 1 and No. 2 seeds double byes, the No. 3 and No. 4 seeds single byes and matches up No. 5/8 and No. 6/7 in the first round. The women's basketball teams previously used this format from 2011-14 and the OVC men's basketball teams have been using the format since 2011.

OVC AND ESPN+ STREAMING PARTNERSHIP

- For the third straight season, ESPN+ is the exclusive home for live web streamed athletic contests involving OVC schools. It offers fans thousands of additional live events, on-demand content and original programming not available on ESPN's linear TV or digital networks. ESPN+ is an integrated part of the completely redesigned ESPN App and also available through ESPN.com. Fans can subscribe to ESPN+ through the ESPN App.

PAT SUMMITT COURT

- The floor in the Kathleen and Tom Elam Center is named for former Tennessee Lady Vols head coach Pat Head Summitt who played her collegiate basketball at UT Martin (1970-74) before becoming the winningest basketball coach in the NCAA with 1,098 victories and eight national championships.

KATHLEEN AND TOM ELAM CENTER

- Built in 1963, the Kathleen and Tom Elam Center was named in honor of longtime UT Board of Trustees member Col. Tom Elam and his wife, Kathleen. The Elam Center houses both the women's and men's basketball teams with all home games being played in Skyhawk Arena. In addition of Skyhawk Arena, which holds a seating capacity of approximately 4,300 seats, the Elam Center also houses both teams locker rooms, training facility and weight room.

FOLLOW THE SKYHAWKS

- The official Twitter of UT Martin Skyhawk Athletics is @UTMSports. Skyhawk women's basketball's account is @UTMartinWBB.

SKYHAWK NEWS ONLINE

- UTMSports.com is the official website for UT Martin Athletics. It is the best source for up-to-date information on the Skyhawk women's basketball team. Rosters, box scores, cumulative statistics, pre-game notes and other materials are available on the site.

PRESS ROW

- The Kathleen and Tom Elam Center press row will not be available to members of the media during the 2020-21 season because of the COVID-19 pandemic. Live stats, offered by StatBroadcast.com, can be found at www.UTMStats.com. Further 2020-21 guidelines and recommendations for media protocols are available on www.UTMSports.com.

INTERVIEW POLICIES

Media interviews with players and coaches are encouraged, and every effort will be made to accommodate media requests. In light of the COVID-19 pandemic, interviews will be limited to over the phone or virtually. No in-person interviews will be allowed. Reach out to the sports information office for the best time to reach head coach Kevin McMillan and Skyhawk student-athletes.

POSTGAME AVAILABILITIES

Players and coaches will be available for virtual interviews at the conclusion of each game. Full stat packages will be available on UTMSports.com upon the completion of the contest. Skyhawk head coach Kevin McMillan and selected players will be made available upon request. In accordance with social distancing guidelines due to the COVID-19 pandemic, space will not be made available following postgame interviews for filing stories.

CREDENTIALS

- Media credentials are required for all Skyhawk home games and can be obtained through the sports information office. Please notify assistant sports information director Alex Boggis at least 24 hours in advance of home games and at least 72 hours in advance of road games.

SKYHAWK RADIO NETWORK

- The flagship station for Skyhawk women's basketball is Thunderbolt Broadcasting with its games broadcast on WCMT 1410 AM, 100.5 FM, 92.7 FM, 96.1 FM, 99.7 FM and 103.3 FM. Chris Brinkley begins his 21st year as coordinator of the Skyhawk Radio Network.



SKYHAWK RECORD WHEN...

Playing at home.....	0-0
Playing on the road.....	2-1
Playing on a neutral floor.....	0-0
Playing Top-25 Opponent.....	0-1
Playing day games.....	1-1
Playing night games.....	1-0
Playing in white uniforms.....	0-0
Playing in navy uniforms.....	1-0
Playing in orange uniforms.....	1-1
Leading at halftime.....	1-0
Trailing at halftime.....	1-1
Tied at halftime.....	0-0
Game decided by 1-4 points.....	1-0
Game decided by 5-9 points.....	1-0
Game decided by 10-14 points.....	0-0
Game decided by 15 points or more.....	0-1
Scoring less than 60 points.....	0-0
Scoring 60-69 points.....	1-1
Scoring 70-79 points.....	1-0
Scoring 80-89 points.....	0-0
Scoring 90-99 points.....	0-0
Scoring 100 or more points.....	0-0
Allowing less than 50 points.....	0-0
Allowing 50-59 points.....	1-0
Allowing 60-69 points.....	1-0
Allowing 70-79 points.....	0-0
Allowing 80 or more points.....	0-1
Finishing with better FG%.....	2-0
Finishing with worse FG%.....	0-1
Shooting 50% or better on FGs.....	1-0
Shooting under 50% on FGs.....	1-1
Finishing with better 3PT FG%.....	2-1
Finishing with worse 3PT FG%.....	0-0
Shooting 40% or better on 3PT FGs.....	1-0
Shooting under 40% on 3PT FGs.....	1-1
Leading in rebounds.....	1-0
Trailing in rebounds.....	1-1
Tied in rebounds.....	0-0
Leading in assists.....	2-0
Trailing in assists.....	0-1
Tied in assists.....	0-0
Leading in steals.....	1-0
Trailing in steals.....	1-1
Tied in steals.....	0-0
Leading in blocks.....	1-1
Trailing in blocks.....	1-0
Tied in blocks.....	0-0
Committing more turnovers than opponent.....	0-1
Committing fewer turnovers than opponent.....	2-0
Committing same number of turnovers.....	0-0
Winning on points in the paint.....	1-0
Losing on points in the paint.....	1-1
Scoring more bench points.....	1-0
Scoring fewer bench points.....	1-1
Scoring the same number of bench points.....	0-0
Scoring more fastbreak points.....	1-0
Scoring fewer fastbreak points.....	0-1
Scoring the same number of fastbreak points.....	1-0
A Skyhawk scores 20+ points.....	2-1
A Skyhawk scores 30+ points.....	1-0
A Skyhawk records a double-double.....	1-0
Playing in December.....	2-1
Playing in January.....	0-0
Playing in February.....	0-0
Playing in March.....	0-0

OHIO VALLEY CONFERENCE



OVC WEEKLY AWARDS

OVC PLAYER OF THE WEEK

Date	Player	Team
Dec. 1	Abby Wahl	Eastern Illinois
Dec. 8	Abby Wahl	Eastern Illinois
Dec. 15	Chelsey Perry	UT Martin
Dec. 22	Chelsey Perry	UT Martin
Jan. 5	-	-
Jan. 12	-	-
Jan. 19	-	-
Jan. 26	-	-
Feb. 2	-	-
Feb. 9	-	-
Feb. 16	-	-
Feb. 23	-	-
March 1	-	-

OVC NEWCOMER OF THE WEEK

Date	Player	Team
Dec. 1	Gabby Crawford	Morehead State
Dec. 8	Imari Martin	Jacksonville State
Dec. 15	Seygan Robins	UT Martin
	Anna Jones	Tennessee Tech
Dec. 22	Jayla Johnson	Eastern Kentucky
Jan. 5	-	-
Jan. 12	-	-
Jan. 19	-	-
Jan. 26	-	-
Feb. 2	-	-
Feb. 9	-	-
Feb. 16	-	-
Feb. 23	-	-
March 1	-	-

OVC FRESHMAN OF THE WEEK

Date	Player	Team
Dec. 1	Katelyn Young	Murray State
Dec. 8	Katelyn Young	Murray State
Dec. 15	Katelyn Young	Murray State
Dec. 22	Katelyn Young	Murray State
Jan. 5	-	-
Jan. 12	-	-
Jan. 19	-	-
Jan. 26	-	-
Feb. 2	-	-
Feb. 9	-	-
Feb. 16	-	-
Feb. 23	-	-
March 1	-	-



OVC WEEKLY AWARDS

SCHOOL	OVC	PCT.	STREAK	OVERALL	PCT.	HOME	AWAY	NEUTRAL	STREAK
Eastern Kentucky	2-0	1.000	W2	3-3	0.500	1-0	2-3	0-0	L1
UT Martin	1-0	1.000	W1	2-1	0.667	0-0	2-1	0-0	W2
Tennessee Tech	1-0	1.000	W1	3-1	0.750	3-0	0-1	0-0	W3
Belmont	1-0	1.000	W1	4-2	0.667	1-1	3-1	0-0	W2
Austin Peay	1-0	1.000	W1	3-2	0.600	1-1	2-1	0-0	W1
Eastern Illinois	1-0	1.000	W1	3-3	0.500	3-1	0-2	0-0	W1
Jacksonville State	0-1	0.000	L1	3-2	0.600	3-0	0-2	0-0	W1
Murray State	0-1	0.000	L1	3-3	0.500	2-1	1-2	0-0	L1
SIUE	0-1	0.000	L1	3-3	0.500	2-1	1-2	0-0	W1
Southeast Missouri	0-1	0.000	L1	2-4	0.333	2-3	0-1	0-0	L2
Tennessee State	0-1	0.000	L1	0-3	0.000	0-1	0-2	0-0	L3
Morehead State	0-2	0.000	L2	1-5	0.167	1-3	0-2	0-0	L2



OVC SCHEDULE AT A GLANCE

Wednesday, December 30

Murray State at Belmont*	ESPN+	Noon
Eastern Illinois at Eastern Kentucky*	ESPN+	4 p.m.
UT Martin at Jacksonville State*	ESPN+	4:30 p.m.
Southeast Missouri at Tennessee Tech*	ESPN+	5 p.m.
SIUE at Morehead State*	ESPN+	5 p.m.
Austin Peay at Tennessee State*	ESPN+	5 p.m.

Saturday, January 2

Belmont at UT Martin*	ESPN+	1 p.m.
Morehead State at Murray State*	ESPN+	1 p.m.
Tennessee Tech at Eastern Illinois*	ESPN+	1 p.m.
Jacksonville State at SIUE*	ESPN+	1 p.m.
Eastern Kentucky at Austin Peay*	ESPN+	1 p.m.
Tennessee State at Southeast Missouri*	ESPN+	2 p.m.



PRESEASON HONORS

Predicted Order of Finish

1.	UT Martin (22)	242
2.	Belmont	210
3.	Southeast Missouri (2)	206
4.	Tennessee Tech	172
5.	Eastern Illinois	157
6.	Jacksonville State	129
7.	Morehead State	119
8.	Murray State	106
9.	Austin Peay	104
10.	Eastern Kentucky	73
11.	SIUE	36
12.	Tennessee State	29

Preseason All-OVC Team

F	Chelsey Perry, UT Martin	Sr.
G	Tesia Thompson, Southeast Missouri	Sr.
F	Maddie Waldrop, UT Martin	Sr.
G	Karle Pace, Eastern Illinois	Sr.
G	Macey Turley, Murray State	Jr.
G	Kesha Brady, Tennessee Tech	Sr.
G	Lariah Washington, Eastern Illinois	So.
F/G	Alexis Burpo, Murray State	Jr.
G	Ariel Kirkwood, Morehead State	So.
G	Jamelyn Kinney, Belmont	Jr.
G	Taylor Hawks, Jacksonville State	Sr.



OVC STATISTICAL LEADERS

SCORING

Rk.	Name	GP	FG	3FG	FT	PTS	PPG
1.	PERRY, Chelsey-UTM	3	31	8	15	85	28.3
2.	BRADY, Kesha-TTU	4	24	6	27	81	20.3
3.	THOMPSON, Tesia-SEMO	6	39	4	29	111	18.5
4.	ROBERTS, Taylor-TSU	3	17	0	19	53	17.7
5.	YOUNG, Katelyn-MUR	6	38	1	26	103	17.2
6.	JOHNSON, Yamia-JSU	5	31	14	7	83	16.6
7.	WRISTER, Andreana-TSU	3	18	5	8	49	16.3
8.	WAHL, Abby-EIU	6	40	1	16	97	16.2
9.	WASHINGTON, Lariah-EIU	6	34	6	17	91	15.2
10.	FERBY, Brianah-APSU	5	26	8	8	68	13.6

REBOUNDING

Rk.	Name	GP	OFF	DEF	TOT	RPG
1.	WAHL, Abby-EIU	6	26	39	65	10.8
2.	KIRKWOOD, Ariel-MOR	6	22	36	58	9.7
3.	WRIGHTSELL, Jaden-TSU	3	13	15	28	9.3
4.	YOUNG, Katelyn-MUR	6	18	36	54	9.0
5.	CARTER, Lauren-MOR	6	19	29	48	8.0
6.	TROECKLER, Allie-SIUE	6	22	24	46	7.7
7.	JONES, Anna-TTU	4	13	17	30	7.5
8.	PERRY, Chelsey-UTM	3	4	18	22	7.3
9.	THATHA, Ajulu-SIUE	6	11	32	43	7.2
	CRAWFORD, Gabby-MOR	6	15	28	43	7.2

ASSISTS

Rk.	Name	GP	NO.	APG
1.	ROBINS, Seygan-UTM	3	14	4.7
2.	WELLS, Destinee-BEL	6	27	4.5
3.	ARTHOFER, Kira-EIU	6	26	4.3
4.	RECANATI, Alice-EKU	6	25	4.2
5.	KINNEY, Jamilyn-BEL	6	24	4.0
6.	HAWKS, TAYLOR-JSU	5	17	3.4
7.	PRUITT, Taelour-SEMO	6	20	3.3
8.	PACE, Karle-EIU	6	19	3.2
9.	WRISTER, Andreana-TSU	3	9	3.0
10.	KINNARD, Mikayla-SIUE	6	17	2.8



GET TO KNOW McMILLAN

EDUCATION

- Undergraduate: Rhodes College, 1989
- Masters: Middle Tennessee, 2007

PLAYING CAREER HIGHLIGHTS

- Began career at Wake Forrest in 1985
- Played three years at Rhodes College, 86-89
- 1988 SCAC Player of the Year
- Three-time SCAC All-Conference Selection
- Ranked No. 9 all-time Rhodes (1,372 pts)

CAREER HISTORY

UT MARTIN (2009-PRESENT)

- Head Coach
- 220-137 in 12 seasons
- Went to four consecutive NCAA Tournaments
- Posted seven 20-win seasons
- Three-time OVC Coach of the Year
- Won five OVC season championships
- Won four OVC Tournament championships
- Led team to eight postseason berths

GIBSON COUNTY HS (2007-09)

- Head Coach
- 62-6 record in two seasons
- Won state championship in 2008-09

MIDDLE TENNESSEE (2005-07)

- Assistant Coach
- Went to back-to-back NCAA Tournaments

WESTVIEW HS (1997-2005)

- Head Coach
- 196-73 record in eight seasons

MILLINGTON CENTRAL HS (1990-97)

- Head Coach
- 177-47 in seven seasons

CHAMPIONSHIPS

OVC CHAMPIONSHIP

- 2012, 2014, 2015, 2016, 2020

OVC TOURNAMENT CHAMPIONSHIP

- 2011, 2012, 2013, 2014

COACHING HONORS

- 2009-10 OVC Coach of the Year
- 2010-11 TSWA Women's Coach of the Year
- 2014-15 OVC Coach of the Year
- 2015-16 OVC Coach of the Year



BY THE NUMBERS

- **Overall:** 220-137 (.616)
- **OVC Play:** 144-43 (.770) | **Non-OVC:** 76-94
- **Home:** 116-25 | **Away:** 83-95 | **Neutral:** 21-17
- **Conference Championships:** Five (12, 14, 15, 16, 20)
- **Postseason:** 20-14 | **NCAA:** 0-4 | **WNIT:** 1-3



McMILLAN AT A GLANCE

In his 12 seasons as a NCAA Division I head coach, Kevin McMillan has racked up **219** total wins to sere as the OVC's active leader,

220

8

McMillan has led the Skyhawks to the postseason **eight** times in 11 seasons - including four consecutive NCAA Tournaments from 2010-14.

With his **200th** victory, McMillan became just the sixth head coach in OVC history to eclipse **200** wins.

200



HEAD COACH KEVIN McMILLAN



YEAR-BY-YEAR HEAD COACHING RECORD

YEAR	OVERALL	OVC	FINISH	POSTSEASON
2009-10	11-19 .366	8-10 .444	4th	-
2010-11	21-11 .656	14-4 .777	2nd	NCAA Tournament First Round
2011-12	23-9 .719	15-1 .938	1st	NCAA Tournament First Round
2012-13	19-15 .559	11-5 .688	4th	NCAA Tournament First Round
2013-14	24-8 .750	15-1 .938	1st	NCAA Tournament First Round
2014-15	22-11 .667	16-0 1.000	1st	WNIT First Round
2015-16	22-10 .688	14-2 .875	1st	WNIT Second Round
2016-17	12-19 .387	8-8 .500	4th	-
2017-18	19-15 .559	13-5 .722	2nd	WNIT First Round
2018-19	23-9 .718	13-5 .722	2nd	-
2019-20	22-10 .688	16-2 .888	1st	WNIT Qualifier ^(Canceled)
2020-21	2-1 .667	1-0 1.000	-	-
OVERALL	220-137 .616	144-43 .770	Eighth Postseason Appearances	

The eighth head coach in UT Martin women's basketball history, Kevin McMillan enters his 12th year at the helm of the Skyhawk program as the school's all-time wins leader with 218 career victories.

Overall, the Skyhawks have won nine Ohio Valley Conference titles during his 11 seasons at UT Martin - including five regular season titles and four tournament crowns. The Skyhawks reached the postseason in six consecutive seasons and eight seasons overall while reaching the NCAA Tournament in 2011, 2012, 2013 and 2014 while earning a bid to the Women's NIT in 2015, 2016, 2018 and 2020 (canceled). Additionally, the program has recorded seven 20-win seasons in the past 10 years with the Skyhawks posting a 218-136 record under McMillan, including a 143-43 mark in conference play. His 218 victories rank as the third-highest win total in OVC history, as he accounts for three OVC Coach of the Year awards.

Off the court, McMillan's teams have exceeded the average NCAA Academic Progress Rate in each of his 11 seasons. He has produced two OVC Scholar-Athletes (the highest individual honor in the league) and has graduated 100 percent of his student-athletes who have completed their eligibility in his Skyhawk tenure.

The Skyhawks posted their sixth league title in program history in 2019-20 after posting a 22-10 overall record while going 16-2 in league action. UT Martin would receive a berth into the Women's NIT after falling in the OVC Basketball Championship finals but the postseason event would be canceled because of COVID-19. In a season in which injuries plagued the roster, the Skyhawks continually rose to the occasions with its 10th 20-win season in program history while featuring a pair of All-OVC first-team performers in Chelsey Perry and Maddie Waldrop.

Perry dominated postseason honors by being named WBCA Coaches' All-American honorable mention, a finalist for the Becky Hammon Mid-Major Player of the Year and OVC Player of the Year selection after ranking first nationally in field goal made (286), second in total points (740) and third in both points per game (23.1) and field goal attempts (386). Meanwhile, Waldrop earned her first All-OVC honor after ranking amongst OVC leaders in defensive rebounds (5.9, fourth), field goal percentage (48.6, fifth), rebounding (7.8 rpg, seventh) and scoring (12.7 ppg, eighth).

Despite having one of the youngest teams in the country on a program which featured just one senior on the roster, the Skyhawks still managed to meet program expectations throughout the 2018-19 season. The Skyhawks would post a 23-9 overall mark while finishing tied for second in the league standings with a record of 13-5. The team's 23 wins tied for the most wins in program history while appearing in the OVC Basketball Championship title contest for the seventh time in the last nine seasons. Highlighting the season was the emergence of senior Emanye Robertson who put the finishing touches on her career with an All-OVC first team and OVC Defense Player of the Year selection. Meanwhile, sophomore Chelsey Perry earned All-OVC second team honors while freshman Brittini Moore was selected to the OVC All-Newcomer squad.

McMillan saw the Skyhawks return to the postseason for the seventh time in his tenure in 2017-18 with another appearance in the Women's NIT. The Skyhawks would ultimately post a 19-15 overall mark while notching a 13-5 mark in league play to earn the No. 2 seed in the OVC Basketball Championship - where the squad advanced to the tournament finals before falling to No. 22 ranked Belmont in overtime. With the league's automatic bid to the Women's NIT, the Skyhawks would travel to Indiana where they fell to the eventual tournament champions.

Faced with one of the youngest rosters in the nation – boasting just four returners and an abundance of key injuries – the Skyhawks' 2016-17 campaign was a year of highs and lows. UT Martin would post a 12-19 overall record while finishing 8-8 in league play – earning the No. 4 seed in the OVC Basketball Championship before ultimately falling in the tournament semifinals. While the season failed to meet expectations, the squad found growth as three Skyhawks earned All-OVC honors. Spray highlighted the season by becoming just the program's third OVC Freshman of the Year while joining Feldhaus and Mason on the All-OVC second team.

The Skyhawks found success once again during the 2015-16 season, notching the program's eighth 20-win season after finishing with a 22-10 overall record and a 14-2 league mark despite playing with just seven healthy scholarship players for much of the year. The Skyhawks notched their third consecutive regular season title, ranking as the third program in conference history and first since 1993. After winning the season championship, the Skyhawks clinched their sixth straight postseason berth, earning a berth in the Women's NIT where they advanced to the second round before falling to Western Kentucky after defeating Memphis – notching the program's first postseason victory since 1999. With the squad's success, McMillan notched his second straight OVC Coach of the Year award – marking just the second time in league history that a coach has won the award in back-to-back seasons.

The 2014-15 season kept with the theme of several program firsts within McMillan's tenure while the squad's 22-11 overall record marked the program's seventh 20-win season. UT Martin notched yet another piece of OVC history after becoming just the sixth team in league history to finish the conference season with an unblemished record and just the second to finish 16-0. With the perfect conference record, the Skyhawks clinched their third OVC season title in the last four years while posting a league record of 46-2 during the stretch. The season also served as the fifth consecutive postseason appearance for the Skyhawks after earning an invitation to the Women's National Invitational Tournament against Ole Miss.

McMillan's 2013-14 squad recorded its sixth OVC championship during a four-year period with both a regular season and tournament championship. The McMillan led Skyhawks set new program records in victories with 24, while setting a new single season scoring record with 2,681 points en route to receiving the program's first votes in the USA TODAY Sports Top 25 Coaches' Poll and a near upset in the NCAA Tournament against No. 7 North Carolina.

The Skyhawks were led by the play of two premier senior guards in Heather Butler and Jasmine Newsome. Butler finished her career as UT Martin and the OVC's all-time leading scorer with 2,865 career points after being named the league's Player of the Year. Butler finished tied for 16th on the NCAA's all-time scoring list while scoring in double figures every game of her career, spanning 129 games and ranking fifth all-time. She also left the Skyhawks as the best three-point shooter in NCAA history after tying the career three-pointers record with 392.

Joining Butler with postseason accolades was the highly decorated Newsome. Newsome notched her third OVC Defensive Player of the Year honor while finishing her Skyhawk career as the school and league's second all-time leading scorer – second to Butler – with 2,566 career points. The two-time OVC Player of the Year was also named All-Mid Major Player of the Year and Mid Major All-American by College Sports Madness.

In his fourth year, the Skyhawks notched their third consecutive OVC Tournament championship during the 2012-13 season, downing No. 2 seed Tennessee Tech 87-80 in overtime on March 9, 2013. With the victory, UT Martin would advance to their third straight trip to the NCAA Tournament, to take on the Notre Dame Fighting Irish. The Skyhawks suffered a 97-64 setback to the eventual National Championship runner-up despite Butler scoring a tournament-best 37 points in the contest.

In 2011-12, McMillan's Skyhawks captured their second OVC Tournament championship in program history, downing No. 3 seed Tennessee Tech 82-65 on March 5. With the victory, UT Martin advanced to make its second consecutive NCAA Tournament appearance, traveling to the Horizon Center in Rosemont, Ill., to take on the Tennessee Lady Vols. The Skyhawks suffered a 72-49 setback to the hands of alumnus Pat Head Summitt.

Consisting of a roster of mostly West Tennessee players, the Skyhawks went 23-9 with a 15-1 OVC mark despite having a relatively young roster which featured just one senior. The 23-win season was the second consecutive 20-win slate for the Skyhawks while also leading the nation in scoring with 80.1 points per game. The Skyhawks were also the nation's top team in assist-to-turnover ratio (1.43) and sixth in assists (17.7 apg).

The 2010-11 season laid the foundation for the future, as three different Skyhawks combined to win an OVC Record 13 Freshmen of the Week honors along with the OVC Team Sportsmanship Award. McMillan's guided the team to a second place finish during the regular season before winning the program's first OVC Tournament title. With the title, the Skyhawks earned its first berth in the NCAA Tournament and played at Cameron Indoor Arena against the Duke Blue Devils.

The Skyhawks went 21-11 with a 14-4 OVC mark in 2010-11 despite having a roster that was the youngest team in America (only two years of Division-I experience heading into the season). The 20-win season was the first since 1998-99 and fourth 20-win campaign in program history.

McMillan's first season at UT Martin was a transformation in every sense of the work as he took over a program that had just finished 2-27 and went winless in conference play. Under his direction the Skyhawks finished the 2010-11 season with an overall record 11-19 while making the program's first OVC Tournament appearance since 2006-07. McMillan took his team all the way to the semifinals of the tournament along with being named OVC Coach of the Year and TSWA Women's Co-Head Coach of the Year.

Prior to being named head coach of the Skyhawks on June 15, 2009, McMillan posted a decorated career as a high school coach within the state of Tennessee. Through his 17 years in the prep ranks, the accumulated a record of 435-126 while winning one state championships and sporting six state tournament appearances. He has had coaching stints at Gibson County High School in Dyer (2007-09), Westview High School in Martin (1997-2005) and Millington High School in Millington (1990-97). McMillan was twice named the Jackson Sun's West Tennessee Coach of the Year in 2003 and 2009, while being tabbed district Coach of the Year 10 times. He also spent two seasons as an assistant coach at Middle Tennessee State.

McMillan played basketball at Wake Forest for one season (1985) before transferring to Rhodes College to finish out his career from 1986-89. At Rhodes, he was a three-time all-conference selection and in 1988 was named the Southern Collegiate Athletic Conference Player of the Year. In only three seasons, he scored 1,372 career points and still ranks ninth all-time at Rhodes for career points scored.

McMillan received his bachelor's degree in math and business in 1989 from Rhodes, then completed his master's in health and human performance at Middle Tennessee in 2007. He has two sons, Matt and Ben, along with one daughter, Alli.

McMILLAN VS. ALL OPPONENTS

Air Force	2-0	Miami (Ohio)	2-0
Alabama	2-1	Mississippi State	0-1
Alabama Huntsville	2-0	Mississippi Valley State	2-0
Arizona	0-1	Missouri	0-5
Arkansas	0-1	Morehead State	8-7
Arkansas State	4-3	Murray State	22-4
Austin Peay	18-5	North Carolina	0-1
Baylor	0-1	North Carolina A&T	1-1
Belmont	9-9	North Dakota	1-0
Central Arkansas	1-1	North Kentucky	0-1
Cincinnati	2-0	Northwestern	0-4
Chattanooga	2-4	Notre Dame	0-1
Christian Brothers	1-0	Ole Miss	0-1
Colorado	0-1	Ohio	0-1
Dayton	0-1	Ohio State	0-1
DePaul	0-1	Oral Roberts	0-1
Duke	0-1	Pepperdine	0-1
Eastern Illinois	18-8	Purdue	0-3
Eastern Kentucky	15-2	Quinnipiac	1-0
Eastern Washington	0-1	Rhodes College	1-0
Evansville	6-1	Saint Louis	2-1
Florida State	0-1	Saint Mary's	0-1
Georgia State	1-1	Samford	4-2
Gonzaga	0-2	SIUE	13-6
Hawai'i	0-1	Southeast Missouri	21-3
Houston Baptist	1-0	Southern Illinois	6-3
Illinois	0-2	Southern Mississippi	2-0
Illinois State	1-1	Stanford	0-1
Indiana	0-2	Tennessee	0-1
Indiana State	1-3	Tennessee State	13-3
Iowa	0-1	Tennessee Tech	12-3
IUPUI	1-1	UAB	0-1
Jacksonville State	13-2	Vanderbilt	0-4
Kentucky	0-2	Western Carolina	2-0
Lamar	0-1	Western Kentucky	0-1
Lipscomb	2-0	Winthrop	1-0
Louisville	0-10		
Marshall	0-1	Total	220-137
Memphis	1-2		

McMILLAN'S RECORD WHEN...

Home Record:	116-25
Road Record:	83-95
Neutral:	21-17
OVC Overall:	144-43
OVC Home:	82-11
OVC Road:	62-32
Ranked opponents:	0-25
Top 10 opponents:	0-11
Leading at half:	176-28
Trailing at half:	39-106
Tied at half:	6-3
UTM outshoots opponent:	173-16
Opponent outshoots UTM:	44-120
UTM shoots more free throws:	152-40
Opponent shoots more free throws:	61-88
UTM shoots the same amount of free throws:	5-8
UTM outrebounds opponent:	108-14
Opponent outrebounds UTM:	108-115
UTM causes more turnovers:	177-53
Opponents causes more turnovers:	36-68
UTM ties in turnovers:	6-13
Nonconference tournaments:	2-10
OVC Tournament:	19-7
NCAA Tournament:	0-4
WNIT:	1-4
Record in November:	31-38
Record in December:	33-45
Record in January:	65-25
Record in February:	66-14
Record in March:	22-13
Games decided by less than five points:	34-37
Games decided by 6-10 points:	45-29
Games decided by 11-20 points:	61-34
Games decided by 20+ points:	80-16
UTM scores 59 or less points:	7-59
UTM scores 60-69 points:	37-46
UTM scores 70-79 points:	65-27
UTM scores 80-89 points:	68-7
UTM scores 90-99 points:	27-0
UTM scores 100+ points:	16-0
Overtime record:	4-10
Record after a loss:	73-52
Longest losing streak:	6 games (2009/2017)
Longest winning streak:	18 games (2014-15)

BREAKING DOWN JACKSONVILLE STATE



SERIES HISTORY

- Overall: 21-17
- In Martin: 11-7
- In Jacksonville: 9-10
- Active Streak: W13
- McMillan vs. Jacksonville State: 13-2
- McMillan vs. Ohio Valley: 144-43

LAST 10 MEETINGS (10-0)

Date	Result	Score	Location
2/22/20	W	73-56	Jacksonville
2/8/20	W	86-72	Martin
2/7/19	W	77-72	Martin
1/25/18	W	61-57 (OT)	Jacksonville
12/29/16	W	94-83	Martin
1/16/16	W	63-53	Jacksonville
1/17/15	W	67-47	Martin
12/30/13	W	88-75	Jacksonville
12/31/12	W	93-63	Martin
2/25/12	W	87-52	Jacksonville

LAST MEETING

(in Jacksonville, Ala.; Feb. 22, 2020)

UT Martin 73

##	Player	GS	MIN	FG	3PT	FT	O-B-T	PF	A	T	B	S	PTS
20	Chelsey Perry	*	39	11-17	2-3	8-9	0-9-9	3	4	4	1	2	32
21	Maddie Waldrop	*	38	7-9	1-2	0-0	0-11-11	3	2	0	2	0	15
11	Dasia Young	*	21	2-7	1-3	2-2	1-2-3	3	1	1	0	0	7
31	Kyannah Grant	*	38	1-2	0-1	2-2	1-3-4	2	4	4	0	1	4
15	Brittini Moore	*	34	0-7	0-3	1-2	0-5-5	4	1	1	0	1	1
13	Tamiah Stanford		22	4-7	0-1	6-10	2-1-3	1	0	2	0	1	14
33	Demi Burdick		4	0-1	0-0	0-0	0-0-0	0	0	0	0	0	0
00	Emma Davis		2	0-1	0-1	0-0	0-0-0	1	0	0	0	0	0
03	Macy Rippey		1	0-0	0-0	0-0	0-0-0	0	0	0	0	0	0
10	Raeagan Johnson		1	0-0	0-0	0-0	0-0-0	0	0	0	0	0	0
TM	TEAM		0	0-0	0-0	0-0	2-0-2	0	0	2	0	0	0
TOTALS		-	200	25-51	4-14	19-25	6-31-37	17	12	14	3	5	73

Shooting Summary

	FG	3PT	FT
1st Quarter	50.00 %	33.33 %	0.00 %
2nd Quarter	54.55 %	0.00 %	75.00 %
3rd Quarter	50.00 %	50.00 %	85.71 %
4th Quarter	40.00 %	50.00 %	70.00 %
Total	49.0 %	28.6 %	76.0 %

Jacksonville State 56

##	Player	GS	MIN	FG	3PT	FT	O-B-T	PF	A	T	B	S	PTS
03	Destiney Elliott	*	31	5-13	1-6	4-4	0-7-7	0	0	2	0	1	15
00	Taylor Hawks	*	20	4-8	1-3	0-0	0-1-1	1	1	2	0	1	9
11	Kiana Johnson	*	33	2-11	0-0	3-4	2-1-3	1	3	0	0	0	7
15	Chloe Long	*	26	2-4	0-0	0-0	0-5-5	4	0	0	0	1	4
23	Jessie Day	*	31	0-3	0-3	0-0	0-0-0	4	0	2	1	0	0
05	Nekiyah Thompson		20	2-7	0-1	5-6	1-2-3	2	1	0	0	0	9
24	Yamia Johnson		24	2-8	0-2	4-6	1-1-2	2	0	1	0	1	8
14	McKenna Lawrence		12	2-4	0-2	0-0	1-1-2	1	0	1	0	0	4
32	Karleigh Sledge		3	0-0	0-0	0-0	0-0-0	1	0	0	0	0	0
TM	TEAM		0	0-0	0-0	0-0	1-3-4	0	0	1	0	0	0
TOTALS		-	200	19-58	2-17	16-20	6-21-27	16	5	9	1	4	56

Shooting Summary

	FG	3PT	FT
1st Quarter	25.00 %	25.00 %	50.00 %
2nd Quarter	35.29 %	0.00 %	75.00 %
3rd Quarter	31.25 %	0.00 %	100.00 %
4th Quarter	38.46 %	25.00 %	87.50 %
Total	32.8 %	11.8 %	80.0 %

Score by Periods

	1st	2nd	3rd	4th	Total
UT Martin	20	18	19	16	73
Jacksonville State	9	15	14	18	56



JACKSONVILLE STATE SEASON STATISTICS

Game Records

Record	Overall	Home	Away	Neutral
ALL GAMES	3-2	3-0	0-2	0-0
CONFERENCE	0-1	0-0	0-1	0-0
NON-CONFERENCE	3-1	3-0	0-1	0-0

Score by Periods

Team	1st	2nd	3rd	4th	OT	TOT
Jacksonville St.	75	68	87	88	0	318
Opponents	62	72	85	76	0	295

Team Box Score

No.	Player	Total			3-Point		F-Throw		Rebounds				PF		TO		BLK		STL		PTS		AVG
		GP-GS	MIN	AVG	FG-FGA	FG%	3FG-FGA	3FG%	FT-FTA	FT%	OFF	DEF	TOT	AVG	PF	DQ	A	TO	BLK	STL	PTS	AVG	
24	JOHNSON, Yamia	5-5	136:59	27.4	31-67	.463	14-32	.438	7-12	.583	1	23	24	4.8	15	0	8	15	0	3	83	16.6	
00	HAWKS, Taylor	5-5	120:16	24.1	14-37	.378	4-15	.267	8-16	.500	1	16	17	3.4	9	0	19	4	0	2	40	8.0	
2	MARTIN, Imari	5-0	95:07	19.0	15-43	.349	7-26	.269	3-4	.750	5	4	9	1.8	5	0	3	6	0	5	40	8.0	
4	GRIFFIN, Keiara	5-4	95:55	19.2	12-42	.286	7-24	.292	3-6	.500	3	17	20	4.0	8	0	5	4	2	4	34	6.8	
5	THOMPSON, Nekiyah	5-0	77:00	15.4	12-23	.522	4-7	.571	3-4	.750	3	8	11	2.2	8	0	9	3	0	4	31	6.2	
11	JOHNSON, Kiana	5-5	123:08	24.6	12-28	.429	2-4	.500	4-6	.667	5	5	10	2.0	8	0	5	2	1	3	30	6.0	
34	KUIMI, Winnie	5-1	86:58	17.4	8-19	.421	0-0	.000	8-12	.667	14	11	25	5.0	9	0	1	8	2	1	24	4.8	
23	DAY, Jessie	5-5	129:51	26.0	8-31	.258	2-15	.133	1-2	.500	6	25	31	6.2	15	0	5	9	2	5	19	3.8	
21	GAVIN, Kennedy	5-0	75:36	15.1	6-17	.353	0-0	.000	0-2	.000	9	13	22	4.4	9	0	1	6	0	1	12	2.4	
3	BURNETT, Kaiya	3-0	11:47	3.9	1-7	.143	1-7	.143	0-0	.000	0	1	1	0.3	0	0	0	0	0	1	3	1.0	
22	WALKER, Jayla	5-0	32:19	6.5	1-10	.100	0-5	.000	0-0	.000	2	5	7	1.4	1	0	2	0	1	0	2	0.4	
1	WILLIAMS, Kyra	4-0	13:12	3.3	0-3	.000	0-1	.000	0-2	.000	1	0	1	0.3	2	0	0	0	0	1	0	0.0	
25	DARGAN, Regan	1-0	01:52	1.9	0-1	.000	0-1	.000	0-0	.000	0	0	0	0.0	0	0	0	0	0	0	0	0.0	
Team											7	14	21				3						
Total		5	1000		120-328	.366	41-137	.299	37-66	.561	57	142	199	39.8	89	0	58	60	8	30	318	63.6	
Opponents		5	1000		100-285	.351	24-90	.267	71-98	.724	50	158	208	41.6	73	0	45	85	16	22	295	59.0	

Team Statistics

	JSU	OPP
Scoring		
Points per game	31.8	29.5
Scoring margin	63.6	59.0
	+4.6	-
Field goals-att		
	120-328	100-285
Field goal pct	.366	.351
3 point fg-att		
	41-137	24-90
3-point FG pct	.299	.267
3-pt FG made per game	8.2	4.8
Free throws-att		
	37-66	71-98
Free throw pct	.561	.724
F-Throws made per game	7.4	14.2
Rebounds		
	199	208
Rebounds per game	39.8	41.6
Rebounding margin	-1.8	-
Assists		
	58	45
Assists per game	11.6	9.0
Turnovers		
	60	85
Turnovers per game	12.0	17.0
Turnover margin	+5.0	-
Assist/turnover ratio	1.0	0.5
Steals		
	30	22
Steals per game	6.0	4.4
Blocks		
	8	16
Blocks per game	1.6	3.2
Winning streak		
	1	-
Home win streak	3	-
Attendance		
	1182	1104
Home games-Avg/Game	3-394	2-552
Neutral site-Avg/Game	-	0-0



JACKSONVILLE STATE SEASON STATISTICS

No.	Name	Pos.	Ht.	Class	Hometown / Previous School
0	Taylor Hawks	G	5-6	Sr.	Gainesville, Ga. / Gainesville HS
1	Kyra Williams	G	5-9	Jr.	Jacksonville, Ala. / Jacksonville HS
2	Imari Martin	G	5-5	Jr.	Hazel Green, Ala. / Hazel Green HS
3	Kaiya Burnett	G	5-6	Jr.	Trenton, N.J. / Pensacola State
4	Keiara Griffin	F	6-0	Fr.	Birmingham, Ala. / Ramsay HS
5	NeKiyah Thompson	G	5-6	So.	Atlanta, Ga. / Frederick Douglas HS
11	Kiana Johnson	G	5-9	Sr.	Decatur, Ga. / Lithia Springs HS
13	Shawnta Shaw	G	5-2	Jr.	Nashville, Tenn. / Pearl-Cohn HS
21	Kennedy Gavin	F	5-11	R-Jr.	Petal, Miss. / Petal HS
22	Jayla Walker	G	5-9	Sr.	Huntsville, Ala. / Sparkman HS
23	Jessie Day	F	6-0	R-Sr.	Niceville, Fla. / Niceville HS
24	Yamia Johnson	G	5-11	Jr.	Lexington, S.C. / White Knoll HS
34	Winnie Kuimi	F	6-3	So.	Missouri City, Texas / Fort Bend Hightower HS

Head Coach: Rick Pietri (Eighth Season | South Alabama, 1987)

LAST TIME IT HAPPENED

SCORING

UTM Scored..	
70-79 points	75 at Samford (12/8/20)
80-89 points	88 vs. Murray State (3/4/20)*
90-99 points	98 vs. Murray State (1/16/20)
100+ points	110 vs. Mississippi Valley State (12/29/18)
Fewer than 40 points	39 at Purdue (11/20/11)

A UTM player had...	
20-29 points	Chelsey Perry (28) at Southeast Missouri (12/18/20)
30+ points	Chelsey Perry (31) at Samford (12/8/20)
40+ points	Chelsey Perry (42) vs. Lipscomb (12/16/19)

Two UT Martin players had...	
20+ points	Perry (22) & Stanford (20) vs. Tennessee State (1/9/20)
25+ points	Jones (29) & Ward (26) at Tennessee Tech (1/15/15)
30+ points	Newsome (36) and Butler (35) vs. Tennessee Tech (1/20/14)

UTM had...double-figures scorers	
Four	Waldrop (21), Perry (18), Young (13) and Moore (10) vs. SIUE (2/27/20)
Five	Perry (21), Burdick (14), Stanford (12), Moore (11) and Hudson (11) vs. Murray State (3/4/20)*
Six	Taylor (23), Robertson (16), Mason (14), Feldhaus (13), Spray (11) and Eubank (11) vs. Jacksonville State (12/29/16)
Seven	Perry (15), Robertson (15), Hicks (14), Davis (11), Hudson (11), Waldrop (10) and Griffin (10) vs. Mississippi Valley State (12/29/18)

UTM had...players score at least 20 points	
Two	Perry (22) and Stanford (20) vs. Tennessee State (1/9/20)
Three	Butler (33), Newsome (24), Jones (20) at Murray State (1/4/14)

DOUBLE-DOUBLES

A UTM player...	
Had a double-double	Chelsey Perry (31pt, 11 rebs) at Samford (12/8/20)
Two UTM players w/double-double	Chelsey Perry (28p, 14r) and Maddie Waldrop (22p, 13r) at Austin Peay (1/4/20)

SHOOTING

UTM Shot...	
50-59% FG	56.4 percent (31-55) at Samford (12/8/20)
60% FG or better	60.5 percent (32-53) at Chattanooga (12/2/17)
Less than 30% FG	23.3 percent (10-43) vs. Pepperdine (11/22/14)

A UTM player...	
Made 5-7 3-pointers	Kyannah Grant (5) at Tennessee Tech (2/20/20)
8+ 3-pointers	Kendall Spray (8) vs. Murray State (2/3/18)

A UTM team...	
Made 10+ 3-pointers	10 vs. Murray State (1/16/22)
Made 15+ 3-pointers	17 at Missouri (12/17/16)
Did not make a 3-pointer	at Austin Peay (2/3/09)

A UTM player...	
Made 10+ FTs in a game	Chelsey Perry (10) at Southern Illinois (12/3/19)
Made 12+ FTs in a game	Emanye Robertson (14) vs. Morehead State (3/8/19)*
Made 15+ FTs in a game ..	Emanye Robertson (15) vs. Jacksonville State (2/7/19)

UT Martin as a team...	
Made 25+ FTs in a game	26 (32) vs. Jacksonville State (2/8/20)
Made 30+ FTs in a game	31 (38) vs. SIUE (1/25/14)
Attempted 25FTs in a game	25 (18) at No. 5 Louisville (12/6/20)
Attempted more than 30 FTs	32 (26) vs. Jacksonville State (2/8/20)

REBOUNDING

A UTM player had...	
10-14 rebounds	Chelsey Perry (11) at Samford (12/8/20)
15-19 rebounds	Maddie Waldrop (16) vs. Tennessee State (3/2/19)
20+ rebounds	None
Two UTM Players w/ 10+ Rebs	Perry (14)/Waldrop (13) at Austin Peay (1/4/20)
2-straight 10+ rebound games	Chelsey Perry vs Murray State (1/16/20) vs. Austin Peay (1/18/20)
2-straight 14+ rebound games	Ashia Jones at SIUE (14 on 2/8/14), at Southeast Missouri (15 on 2/15/14)

A UTM team had...	
40+ rebounds	43 vs. Eastern Illinois (3/6/20)*
50+ rebounds	56 vs. Mississippi Valley State (12/29/18)
15+ off. rebounds	15 vs. Tennessee State (1/9/20)
20+ off. rebounds	23 at Murray State (1/2/20)
25+ off. rebounds	28 vs. Christian Brothers (11/19/18)

ASSISTS

A UTM player had...	
5-9 assists	Seygan Robins (6) at Samford (12/8/20)
10+ assists	Tamiah Stanford (10) vs. Murray State (3/4/20)

As a team UT Martin...	
Had 15-19 assists	15 at Southeast Missouri (12/18/20)
20-24 assists	21 at Samford (12/8/20)
25+ assists	26 vs. Murray State (3/4/20)

BLOCKS

A UTM players...	
Had 3+ blocks	Chelsey Perry (3) vs. Southeast Missouri (3/7/20)*
Had 5+ blocks	Chelsey Perry (7) vs. Austin Peay (1/18/20)

As a team UT Martin...	
Had 5+ blocks	5 vs. Southeast Missouri (3/7/20)*
Had 10+ blocks	12 vs. Mississippi Valley State (12/29/18)

STEALS

A UTM player had...	
5-9 steals	Tamiah Stanford (5) at Morehead State (2/1/20)
10+ steals	Ashia Jones (11) at Miami (12/15/14) *UTM Record

As a team UT Martin...	
10-14 steals	11 at Southeast Missouri (2/13/20)
15+ steals	15 vs. No. 6 Louisville (12/19/19)

MISCELLANEOUS

A UTM team...	
Played an OT game	L, 71-63 vs. No. 6 Louisville (12/19/19)
Played a 2OT game	L, 71-63 vs. No. 6 Louisville (12/19/19)

A UTM Player...	
Buzzer-beater	Ashton Feldhaus vs. SIUE (1/21/17)
To force OT	Janekia Mason at Jacksonville State (1/25/18)
Buzzer-beating 3-pointer	Taylor Hall vs. Eastern Illinois (2/11/12)
3-pointer to force OT	Janekia Mason at Jacksonville State (1/25/18)
Game-winner <2 secs	Emanye Robertson (0.2) at Chattanooga (11/28/18)
Free Throw With <5 secs	Chelsey Perry (0.4) vs. SIUE* (3/2/18)
Four-point play	Kendall Spray at Murray State (1/28/17)

* Occurred during the OVC Tournament

RECORD BOOK AT A GLANCE

SINGLE-GAME TEAM RECORDS

Most Points

116 vs. Austin Peay (3/1/14)

Most Field Goals Made

50 vs. Trevecca (1976-77)

Most Field Goals Attempted

97, 36 made, vs. Jacksonville State (1/6/90)

Most 3-Point Field Goals Made

18, of 43, at Southern Miss (11/16/11)

18, of 35, vs. North Dakota (11/14/16)

Most 3-Point Field Goals Attempted

47, 17 made, at Morehead State (1/7/16)

Most Free Throws Made

39, of 55, vs. Troy State (1/13/86)

Most Free Throws Attempted

55, 39 made, vs. Troy State (1/13/86)

55, 37 made, at Eastern Kentucky (12/3/98)

Most Rebounds

63 vs. Bethel (12/7/91)

Most Assists

31 vs. Morehead State (1/10/15)

Most Blocks

12 vs. Mississippi Valley State (12/29/18)

12 vs. SIU Edwardsville (2/9/13)

Most Forced Turnovers

36 at Southern Illinois (12/23/13)

Most Steals

28 vs. Bethel (12/14/90)

SINGLE-GAME INDIVIDUAL RECORDS

Most Points:

44, Ashia Jones at Murray State (1/31/15)

44, Heather Butler vs. Austin Peay (3/1/14)

44, Heather Butler at Eastern Kentucky (2/3/14)

44, Jasmine Newsome vs. Quinnipiac (11/16/13)

Most Field Goals Made

18, Angela Reaves vs. Delta State (1982-83)

Most Field Goals Attempted

34, Heather Butler vs. Baylor (11/17/12)

Best Field Goal Percentage

12-12, Chastity Bohannon vs. Tennessee St (2/24/98)

10-10, Andreika Jackson vs. Eastern Illinois (2/11/06)

Most 3-Point Field Goals Made

11-of-18, Kendall Spray vs. Rhodes (12/7/17)

Most 3-Point Field Goals Attempted

18, 11 made, Kendall Spray vs. Rhodes (12/7/17)

Most Free Throws Made

16, Jasmine Newsome vs. Quinnipiac (11/16/13)

16, Jasmine Newsome at Tennessee St (1/2/12)

16, Tessa Fields vs Evansville (11/13/98)

Most Free Throws Attempted

20, Jasmine Newsome at Tennessee St (1/2/12)

Most Rebounds

27, Mary Kate Long vs. West Georgia (1/17/87)

Most Assists

14, Jasmine Newsome vs. Austin Peay (3/1/14)

Most Blocks

8, Chelsey Perry vs. IUPUI (11/25/19)

8, Rickiesha Bryant vs. Murray State (2/23/13)

8, Mary Kate Long vs. Lambuth (11/21/86)

Most Steals

11, Ashia Jones at Miami (Ohio) (12/15/14)

SINGLE-SEASON RECORDS

Most Points

772, Ashia Jones (2014-15)

Most Field Goals Made

287 of 548, Ashia Jones (2014-15)

Most Field Goals Attempted

704, 264 made, Heather Butler (2012-13)

Best Field Goal Percentage

64.3, (128-199), Rickiesha Bryant (2012-13)

Most 3-Point Field Goals Made

125 of 294, Kendall Spray (2017-18)

Most 3-Point Field Goals Attempted

319, 105 made, Heather Butler (2012-13)

Most Free Throws Made

198 of 261, Ashia Jones (2014-15)

Most Free Throws Attempted

261, 198 made, Ashia Jones (2014-15)

Most Rebounds

372, Phyllisha Mitchell (2005-09)

Most Assists

193, Jasmine Newsome (2011-12)

Most Blocks

87, Rickiesha Bryant (2012-13)

Most Steals

156, Gwen Long (1989-90)

CAREER RECORDS

Most Points

2,865, Heather Butler (2010-14)

Most Field Goals Made

958 of 2,417, Heather Butler (2010-14)

Most Field Goals Attempted

2,417, 958 made, Heather Butler (2010-14)

Best Field Goal Percentage

53.2, (747-of-1,404), Mary Kate Long (1985-89)

Most 3-Point Field Goals Made

392 of 1074, Heather Butler (2010-14)

Most 3-Point Field Goals Attempted

1074, 392 made, Heather Butler (2010-14)

Most Free Throws Made

620 of 759, Jasmine Newsome (2010-14)

Most Free Throws Attempted

759, 620 made, Jasmine Newsome (2010-14)

759, 564 made, Tara Tansil (1991-94)

Most Rebounds

1,318, Mary Kate Long (1985-89)

Most Assists

691, Jasmine Newsome (2010-14)

Most Blocks

203, Mary Kate Long (1985-89)

Most Steals

411, Gwen Long (1985-88, 1989-90)

TRACKING CAREER MILESTONES

POINTS

Rk.	Pts	Name	Year
1.	2865	Heather Butler	2010-14
2.	2566	Jasmine Newsome	2010-14
3.	1754	Mary Kate Long	1985-89
4.	1723	Zabrina Harris	1996-00
5.	1702	Tara Tansil	1991-95
6.	1590	Chelsey Perry	2017-P
7.	1405	Pat Head Summitt	1970-74
8.	1377	Andreika Jackson	2003-07
9.	1345	Gwen Long	1985-88, 89-90
10.	1253	Emanye Robertson	2015-19

REBOUNDS

Rk.	Rbs	Name	Year
1.	1318	Mary Kate Long	1985-89
2.	973	Phyllisha Mitchell	2005-08
3.	734	Angela Reaves	1981-85
4.	720	Andreika Jackson	2003-07
5.	696	Zabrina Harris	1996-00
6.	669	Maddie Waldrop	2017-P
7.	666	Tracy Webb	1998-02
8.	657	Tara Tansil	1991-95
9.	647	Chelsey Perry	2017-P
10.	604	Jasmine Newsome	2010-14

FIELD GOALS MADE

Rk.	FG	Name	Year
1.	958	Heather Butler	2010-14
2.	857	Jasmine Newsome	2010-14
3.	747	Mary Kate Long	1985-89
4.	699	Zabrina Harris	1996-00
5.	600	Chelsey Perry	2017-P
6.	522	Pat Head Summitt	1970-74
7.	505	Gwen Long	1985-88, 89-90
8.	497	Angela Reaves	1981-85
9.	493	Tara Tansil	1991-95
10.	454	Emanye Robertson	2015-19

BLOCKS

Rk.	Blks	Name	Year
1.	203	Mary Kate Long	1985-89
2.	199	Chelsey Perry	2017-P
3.	155	Rickiesha Bryant	2010-13
4.	93	Chastity Bohannon	1997-00
5.	90	Zabrina Harris	1996-00
6.	67	Melissa Dawson	1987-91
7.	64	Maddie Waldrop	2017-P
8.	52	Katie Schubert	2012-16
9.	49	Jasmine Newsome	2010-14
10.	48	Tracy Webb	1998-02

3-POINTERS MADE

Rk.	3Pt.	Name	Year
1.	392	Heather Butler	2010-14
2.	232	Jasmine Newsome	2010-14
3.	225	Katie Schubert	2012-16
4.	210	Kendall Spray	2016-18
5.	209	Jessy Ward	2014-17
6.	156	Kelly Pendleton	1998-02
7.	152	Tara Tansil	1991-95
8.	128	Jaclyssa Haislip	2010-12
9.	115	Taylor Hall	2010-12
10.	111	Gina Warren	1990-94

ASSISTS

Rk.	Ast.	Name	Year
1.	691	Jasmine Newsome	2010-14
2.	514	Emanye Robertson	2015-19
3.	467	Heather Butler	2010-14
4.	458	Gwen Long	1985-88, 89-90
5.	394	Janice Epperson	1987-91
6.	380	Katie Schubert	2012-16
7.	315	Tessa Fields	1997-99
8.	313	Deenie Ware	1981-85
9.	304	Tara Tansil	1991-95
10.	278	Danielle Page	2001-05

FREE THROWS MADE

Rk.	FT	Name	Year
1.	620	Jasmine Newsome	2010-14
2.	564	Tara Tansil	1991-95
3.	557	Heather Butler	2010-14
4.	417	Andreika Jackson	2003-07
5.	368	Pat Head Summitt	1970-74
6.	325	Gwen Long	1985-88, 89-90
7.	316	Phyllisha Mitchell	2005-08
8.	311	Zabrina Harris	1996-00
9.	310	Emanye Robertson	2015-19
10.	302	Ashia Jones	2013-15

STEALS

Rk.	St.	Name	Year
1.	411	Gwen Long	1985-88, 89-90
2.	325	Jasmine Newsome	2010-14
3.	256	Tara Tansil	1991-95
4.	250	Emanye Robertson	2015-19
5.	221	Deenie Ware	1981-85
6.	184	Janice Epperson	1987-91
7.	182	Katie Schubert	2012-16
8.	178	Tracy Webb	1998-02
9.	173	Gina Warren	1990-94
10.	171	Tessa Fields	1997-99

VS. RANKED OPPONENTS

DATE	OPPONENT	RESULTS
1/22/76	AT #19 KENTUCKY	L, 63-56
2/12/79	AT #6 TENNESSEE	L, 124-60
3/2/79	AT #8 TENNESSEE	L, 96-51
2/16/80	#4 TENNESSEE	L, 69-55
2/28/80	VS. #4 TENNESSEE	L, 81-35
2/26/81	VS. #4 TENNESSEE	L, 71-41
11/23/97	#1 TENNESSEE	L, 73-32
11/19/99	#5 TENNESSEE	L, 133-60
1/7/02	AT #9 NORTH CAROLINA	L, 90-67
12/22/02	#4 VANDERBILT	L, 101-77
12/3/03	AT #2 NORTH CAROLINA	L, 101-63
12/2/04	AT #4 NORTH CAROLINA	L, 96-36
1/2/05	AT #15 GEORGIA	L, 68-52
12/30/05	#17 GEORGIA	L, 81-47
12/5/06	AT #6 TENNESSEE	L, 85-29
11/28/08	AT #25 XAVIER	L, 73-41
12/30/10	AT #11 KENTUCKY	L, 68-47
3/19/11	AT #6 DUKE	L, 90-45
11/20/11	AT #16 PURDUE	L, 65-39
12/7/11	#23 VANDERBILT	L, 99-84
12/28/11	AT #14 LOUISVILLE	L, 70-57
3/17/12	#9 TENNESSEE	L, 72-49
11/17/12	VS. #1 BAYLOR	L, 82-67
11/18/12	VS. #4 STANFORD	L, 92-68
11/26/12	#4 LOUISVILLE	L, 79-61
12/9/12	#14 PURDUE	L, 68-60
3/24/13	VS. #2 NOTRE DAME	L, 97-64
11/10/13	AT #25 GONZAGA	L, 91-54
12/28/13	AT #20 FLORIDA STATE	L, 76-53
3/23/14	VS. #12 NORTH CAROLINA	L, 60-58
11/15/15	AT #23 IOWA	L, 62-56
11/11/16	#5 LOUISVILLE	L, 100-57
12/20/16	AT #22 DePAUL	L, 100-68
12/5/17	AT #4 LOUISVILLE	L, 91-56
3/3/18	VS. #22 BELMONT	L, 63-56 ^(OT)
12/4/18	AT #4 LOUISVILLE	L, 102-62
11/11/19	AT #10 MISSISSIPPI STATE	L, 82-46
11/14/19	AT #23 GONZAGA	L, 78-55
12/19/19	VS. #6 LOUISVILLE	L, 71-63 ^(2OT)
12/29/19	AT #20 ARKANSAS	L, 96-46
12/6/20	AT #5 LOUISVILLE	L, 85-67

TOTAL vs. TOP 25 0-41

vs. No. 1 0-2
 vs. No. 2 0-2
 vs. No. 4 0-9
 vs. No. 5 0-3
 vs. No. 6 0-4
 vs. No. 8 0-1
 vs. No. 9 0-2
 vs. No. 10 0-1
 vs. No. 11 0-1
 vs. No. 12 0-1
 vs. No. 14 0-2
 vs. No. 15 0-1
 vs. No. 16 0-1
 vs. No. 17 0-1
 vs. No. 19 0-1
 vs. No. 20 0-2
 vs. No. 22 0-2
 vs. No. 23 0-3
 vs. No. 25 0-2

PLAYER SUMMARIES



2

SADE' HUDSON

Jr. | G | 5-8 | Memphis, Tenn. | Trezevant HS

SEASON HIGHS

Points	3 at Samford (12/8/20)
FG Made	N/A
FG Att.	5 at #5 Louisville (12/6/20)
3PG Made	N/A
3FG Att.	1, 2x, last at Samford (12/8/20)
FT Made	3 at Samford (12/8/20)
FT Att.	4 at Samford (12/8/20)
Rebounds	3 at #5 Louisville (12/6/20)
Assists	3 at Samford (12/8/20)
Steals	1, 2x, last at Samford (12/8/20)
Blocks	N/A
Minutes	24 at #5 Louisville (12/6/20)

CAREER HIGHS

Points	14, 2x, last vs. Lipscomb (12/16/19)
FG Made	6 vs. Lipscomb (12/16/19)
FG Att.	16 vs. Lipscomb (12/16/19)
3PG Made	3 at Eastern Kentucky (11/17/19)
3FG Att.	7 vs. Lipscomb (12/16/19)
FT Made	6 vs. Southern Illinois (11/9/18)
FT Att.	10 vs. Samford (11/6/18)
Rebounds	6 vs. Lipscomb (12/16/19)
Assists	4 vs. Murray State (3/4/20)
Steals	4 vs. Southeast Missouri (2/14/19)
Blocks	1 vs. Tennessee Tech (2/9/19)
Minutes	39 vs. Lipscomb (12/16/19)

MISCELLANEOUS CAREER STATISTICS

Games Played	45	Double-Doubles	0
Games Started	1	10+ Points	5
Led Team In Scoring	0	20+ Points	0
Led Team In Rebounding	0	5+ Rebounds	2
Led Team In Assists	3	10+ Rebounds	2
Led Team In Steals	4	5+ Assists	0
Led Team In Blocks	0	3+ Steals	6

HUDSON GAME-BY-GAME STATISTICS

Date	Opp	GS	Min	FG	3FG	FT	O-D-R	PF	A	T	S	B	PTS
D6	at LOU		24	0-5	0-1	1-2	0-3-3	1	1	4	1	0	1
D8	at SAM		16	0-2	0-1	3-4	0-0-0	0	3	1	1	0	3
D18	at SEMO*		0+	0-0	0-0	0-0	0-0-0	0	0	0	0	0	0
D30	at JSU*	-	-	-	-	-	-	-	-	-	-	-	-
J2	BEL*	-	-	-	-	-	-	-	-	-	-	-	-
J7	at TSU*	-	-	-	-	-	-	-	-	-	-	-	-
J9	at BEL*	-	-	-	-	-	-	-	-	-	-	-	-
J14	AP*	-	-	-	-	-	-	-	-	-	-	-	-
J16	MUR*	-	-	-	-	-	-	-	-	-	-	-	-
J21	at ECU*	-	-	-	-	-	-	-	-	-	-	-	-
J23	at MOR*	-	-	-	-	-	-	-	-	-	-	-	-
J28	EIU*	-	-	-	-	-	-	-	-	-	-	-	-
J30	SIUE*	-	-	-	-	-	-	-	-	-	-	-	-
F1	SEMO*	-	-	-	-	-	-	-	-	-	-	-	-
F4	JSU*	-	-	-	-	-	-	-	-	-	-	-	-
F6	TTU*	-	-	-	-	-	-	-	-	-	-	-	-
F11	at AP*	-	-	-	-	-	-	-	-	-	-	-	-
F13	at MUR*	-	-	-	-	-	-	-	-	-	-	-	-
F18	MOR*	-	-	-	-	-	-	-	-	-	-	-	-
F20	ECU*	-	-	-	-	-	-	-	-	-	-	-	-
F25	at SIUE*	-	-	-	-	-	-	-	-	-	-	-	-
F27	at EIU*	-	-	-	-	-	-	-	-	-	-	-	-
M3	OVC	-	-	-	-	-	-	-	-	-	-	-	-
M4	OVC	-	-	-	-	-	-	-	-	-	-	-	-
M5	OVC	-	-	-	-	-	-	-	-	-	-	-	-
M6	OVC	-	-	-	-	-	-	-	-	-	-	-	-

HUDSON CAREER STATISTICS

					Total			3-Point			F-Throw			Rebounds								Scoring		
Year	GP	GS	Min	Avg	FG	FGA	Pct	FG	FGA	Pct	FT	FTA	Pct	Off	Def	Tot	Avg	PF	Ast	TO	Blk	Stl	Pts	Avg
2018-19	28	0	299	10.7	41	131	.313	7	42	.167	29	44	.659	17	25	42	1.5	48	32	37	1	25	118	4.2
2019-20	14	1	209	14.9	24	65	.369	2	13	.154	3	11	.273	9	12	21	1.5	29	16	17	1	12	53	3.8
2020-21	3	0	39	13.0	0	7	.000	0	2	.000	4	6	.667	0	3	3	1.0	1	4	5	0	2	4	1.3
TOTAL	45	1	547	12.2	65	203	.320	9	57	.158	36	61	.590	26	40	66	1.5	78	52	59	2	39	175	3.9



3

MACY RIPPY

So. | G | 5-9 | Clarksville, Tenn. | Rossvie HS

SEASON HIGHS

Points	N/A
FG Made	N/A
FG Att.	1 at #5 Louisville (12/6/20)
3PG Made	N/A
3FG Att.	1 at #5 Louisville (12/6/20)
FT Made	N/A
FT Att.	N/A
Rebounds	N/A
Assists	N/A
Steals	N/A
Blocks	N/A
Minutes	5 at #5 Louisville (12/6/20)

CAREER HIGHS

Points	2, 3x, last at Murray State (1/2/20)
FG Made	1, 2x, last at Murray State (1/2/20)
FG Att.	4, 3x, last at Murray State (1/2/20)
3PG Made	N/A
3FG Att.	3, 2x, last at No. 20 Arkansas (12/29/19)
FT Made	2 at #23 Gonzaga (11/14/19)
FT Att.	2 at #23 Gonzaga (11/14/19)
Rebounds	4 at #20 Arkansas (12/29/19)
Assists	1, 3x, last vs. Chattanooga (12/8/19)
Steals	1 vs. Murray State (3/4/20)
Blocks	N/A
Minutes	13 at #10 Mississippi State (11/11/19)

MISCELLANEOUS CAREER STATISTICS

Games Played	22	Double-Doubles	0
Games Started	0	10+ Points	0
Led Team In Scoring	0	20+ Points	0
Led Team In Rebounding	0	5+ Rebounds	0
Led Team In Assists	0	10+ Rebounds	0
Led Team In Steals	0	5+ Assists	0
Led Team In Blocks	0	3+ Steals	0

RIPPY GAME-BY-GAME STATISTICS

Date	Opp	GS	Min	FG	3FG	FT	O-D-R	PF	A	T	S	B	PTS
D6	at LOU		5	0-1	0-1	0-0	0-0-0	0	0	1	0	0	0
D8	at SAM	-	-	-	-	DNP	-	-	-	-	-	-	-
D18	at SEMO*		0+	0-0	0-0	0-0	0-0-0	0	0	0	0	0	0
D30	at JSU*	-	-	-	-	-	-	-	-	-	-	-	-
J2	BEL*	-	-	-	-	-	-	-	-	-	-	-	-
J7	at TSU*	-	-	-	-	-	-	-	-	-	-	-	-
J9	at BEL*	-	-	-	-	-	-	-	-	-	-	-	-
J14	AP*	-	-	-	-	-	-	-	-	-	-	-	-
J16	MUR*	-	-	-	-	-	-	-	-	-	-	-	-
J21	at ECU*	-	-	-	-	-	-	-	-	-	-	-	-
J23	at MOR*	-	-	-	-	-	-	-	-	-	-	-	-
J28	EIU*	-	-	-	-	-	-	-	-	-	-	-	-
J30	SIUE*	-	-	-	-	-	-	-	-	-	-	-	-
F1	SEMO*	-	-	-	-	-	-	-	-	-	-	-	-
F4	JSU*	-	-	-	-	-	-	-	-	-	-	-	-
F6	TTU*	-	-	-	-	-	-	-	-	-	-	-	-
F11	at AP*	-	-	-	-	-	-	-	-	-	-	-	-
F13	at MUR*	-	-	-	-	-	-	-	-	-	-	-	-
F18	MOR*	-	-	-	-	-	-	-	-	-	-	-	-
F20	ECU*	-	-	-	-	-	-	-	-	-	-	-	-
F25	at SIUE*	-	-	-	-	-	-	-	-	-	-	-	-
F27	at EIU*	-	-	-	-	-	-	-	-	-	-	-	-
M3	OVC	-	-	-	-	-	-	-	-	-	-	-	-
M4	OVC	-	-	-	-	-	-	-	-	-	-	-	-
M5	OVC	-	-	-	-	-	-	-	-	-	-	-	-
M6	OVC	-	-	-	-	-	-	-	-	-	-	-	-

RIPPY CAREER STATISTICS

				Total			3-Point			F-Throw			Rebounds								Scoring			
Year	GP	GS	Min	Avg	FG	FGA	Pct	FG	FGA	Pct	FT	FTA	Pct	Off	Def	Tot	Avg	PF	Ast	TO	Blk	Stl	Pts	Avg
2019-20	20	0	82	4.1	3	23	.130	0	13	.000	5	7	.714	1	6	7	0.4	9	5	7	0	1	11	0.6
2020-21	2	0	5	2.5	0	1	.000	0	1	.000	0	0	0.0	0	0	0	0.0	0	0	1	0	0	0	0.0
TOTAL	22	0	87	4.0	3	24	.125	0	14	.000	5	7	.714	1	6	7	0.3	9	5	8	0	1	11	0.5

PLAYER SUMMARIES



5

SEYGAN ROBINS

R-So. | G | 5-10 | Harrodsburg, Ky. | Mercer County HS

SEASON HIGHS		CAREER HIGHS	
Points	16 at Samford (12/8/20)	Points	16 at Samford (12/8/20)
FG Made	6 at Samford (12/8/20)	FG Made	6 at Samford (12/8/20)
FG Att.	9 at Samford (12/8/20)	FG Att.	9 at Samford (12/8/20)
3PG Made	4 at Samford (12/8/20)	3PG Made	4 at Samford (12/8/20)
3FG Att.	6 at Samford (12/8/20)	3FG Att.	6 at Samford (12/8/20)
FT Made	2, 2x, at Southeast Missouri (12/18/20)	FT Made	2, 3x, at Southeast Missouri (12/18/20)
FT Att.	2, 2x, at Southeast Missouri (12/18/20)	FT Att.	3 vs. Tennessee State (12/2/18)*LOU
Rebounds	2 at Samford (12/8/20)	Rebounds	3 at Clemson (2/2/19)*LOU
Assists	6 at Samford (12/8/20)	Assists	6 at Samford (12/8/20)
Steals	2 at Samford (12/8/20)	Steals	2 at Samford (12/8/20)
Blocks	N/A	Blocks	1 vs. Syracuse (2/7/19)*LOU
Minutes	39 at Southeast Missouri (12/18/20)	Minutes	39 at Southeast Missouri (12/18/20)

MISCELLANEOUS CAREER STATISTICS			
Games Played	31 3 at UTM	Double-Doubles	0
Games Started	3	10+ Points	1
Led Team In Scoring	0	20+ Points	0
Led Team In Rebounding	0	5+ Rebounds	0
Led Team In Assists	3	10+ Rebounds	0
Led Team In Steals	1	5+ Assists	1
Led Team In Blocks	0	3+ Steals	0

ROBINS GAME-BY-GAME STATISTICS													
Date	Opp	GS	Min	FG	3FG	FT	O-D-R	PF	A	T	S	B	PTS
D6	at LOU	*	26	2-6	0-2	2-2	0-1-1	4	4	5	0	0	6
D8	at SAM	*	38	6-9	4-6	0-0	1-1-2	2	6	6	2	0	16
D18	at SEMO*	*	39	2-6	0-3	2-2	0-1-1	2	4	3	1	0	6
D30	at JSU*	-	-	-	-	-	-	-	-	-	-	-	-
J2	BEL*	-	-	-	-	-	-	-	-	-	-	-	-
J7	at TSU*	-	-	-	-	-	-	-	-	-	-	-	-
J9	at BEL*	-	-	-	-	-	-	-	-	-	-	-	-
J14	AP*	-	-	-	-	-	-	-	-	-	-	-	-
J16	MUR*	-	-	-	-	-	-	-	-	-	-	-	-
J21	at ECU*	-	-	-	-	-	-	-	-	-	-	-	-
J23	at MOR*	-	-	-	-	-	-	-	-	-	-	-	-
J28	EIU*	-	-	-	-	-	-	-	-	-	-	-	-
J30	SIUE*	-	-	-	-	-	-	-	-	-	-	-	-
F1	SEMO*	-	-	-	-	-	-	-	-	-	-	-	-
F4	JSU*	-	-	-	-	-	-	-	-	-	-	-	-
F6	TTU*	-	-	-	-	-	-	-	-	-	-	-	-
F11	at AP*	-	-	-	-	-	-	-	-	-	-	-	-
F13	at MUR*	-	-	-	-	-	-	-	-	-	-	-	-
F18	MOR*	-	-	-	-	-	-	-	-	-	-	-	-
F20	ECU*	-	-	-	-	-	-	-	-	-	-	-	-
F25	at SIUE*	-	-	-	-	-	-	-	-	-	-	-	-
F27	at EIU*	-	-	-	-	-	-	-	-	-	-	-	-
M3	OVC	-	-	-	-	-	-	-	-	-	-	-	-
M4	OVC	-	-	-	-	-	-	-	-	-	-	-	-
M5	OVC	-	-	-	-	-	-	-	-	-	-	-	-
M6	OVC	-	-	-	-	-	-	-	-	-	-	-	-

ROBINS CAREER STATISTICS													
Year	GP	GS	Min	Avg	Total FG	FGA Pct	3-Point FG	3-Point FGA Pct	F-Throw FT	FTA Pct	Rebounds Off	Def	Tot Avg
2018-19*	26	0	196	7.5	13	37 .351	8	30 .267	7	12 .583	2	11	13 0.5
2019-20*	2	0	22	11.0	0	5 .000	0	4 .000	0	0 .000	0	6	6 3.0
2020-21	3	3	102	34.0	10	21 .476	4	11 .364	4	4 1.000	1	3	4 1.3
TOTAL	31	3	320	10.3	23	63 .365	12	45 .267	11	16 .688	3	20	23 0.7
UTM	3	3	102	34.0	10	21 .476	4	11 .364	4	4 1.000	1	3	4 1.3

*Played 2018-19 and 2019-20 seasons at Louisville



10

RAEGAN JOHNSON

So. | F | 6-2 | Martin, Tenn. | Westviw HS

SEASON HIGHS		CAREER HIGHS	
Points	4 at #5 Louisville (12/8/20)	Points	4, 4x, last at #5 Louisville (12/8/20)
FG Made	2 at #5 Louisville (12/8/20)	FG Made	2, 4x, last at #5 Louisville (12/8/20)
FG Att.	2 at #5 Louisville (12/8/20)	FG Att.	4 at #20 Arkansas (12/29/19)
3PG Made	N/A	3PG Made	N/A
3FG Att.	N/A	3FG Att.	N/A
FT Made	N/A	FT Made	1 vs. Jacksonville State (2/8/20)
FT Att.	N/A	FT Att.	2 vs. Jacksonville State (2/8/20)
Rebounds	3 at #5 Louisville (12/8/20)	Rebounds	4, 2x, last vs. Murray State (3/4/20)
Assists	N/A	Assists	2 vs. Jacksonville State (2/8/20)
Steals	N/A	Steals	1, 3x, last vs. Murray State (1/16/20)
Blocks	N/A	Blocks	N/A
Minutes	6 at #5 Louisville (12/8/20)	Minutes	11 vs. Jacksonville State (2/8/20)

MISCELLANEOUS CAREER STATISTICS			
Games Played	21	Double-Doubles	0
Games Started	0	10+ Points	0
Led Team In Scoring	0	20+ Points	0
Led Team In Rebounding	0	5+ Rebounds	0
Led Team In Assists	0	10+ Rebounds	0
Led Team In Steals	0	5+ Assists	0
Led Team In Blocks	0	3+ Steals	0

JOHNSON GAME-BY-GAME STATISTICS													
Date	Opp	GS	Min	FG	3FG	FT	O-D-R	PF	A	T	S	B	PTS
D6	at LOU	6	2-2	0-0	0-0	0-3-3	3	0	1	0	0	0	4
D8	at SAM	-	-	-	-	DNP	-	-	-	-	-	-	-
D18	at SEMO*	-	-	-	-	DNP	-	-	-	-	-	-	-
D30	at JSU*	-	-	-	-	-	-	-	-	-	-	-	-
J2	BEL*	-	-	-	-	-	-	-	-	-	-	-	-
J7	at TSU*	-	-	-	-	-	-	-	-	-	-	-	-
J9	at BEL*	-	-	-	-	-	-	-	-	-	-	-	-
J14	AP*	-	-	-	-	-	-	-	-	-	-	-	-
J16	MUR*	-	-	-	-	-	-	-	-	-	-	-	-
J21	at ECU*	-	-	-	-	-	-	-	-	-	-	-	-
J23	at MOR*	-	-	-	-	-	-	-	-	-	-	-	-
J28	EIU*	-	-	-	-	-	-	-	-	-	-	-	-
J30	SIUE*	-	-	-	-	-	-	-	-	-	-	-	-
F1	SEMO*	-	-	-	-	-	-	-	-	-	-	-	-
F4	JSU*	-	-	-	-	-	-	-	-	-	-	-	-
F6	TTU*	-	-	-	-	-	-	-	-	-	-	-	-
F11	at AP*	-	-	-	-	-	-	-	-	-	-	-	-
F13	at MUR*	-	-	-	-	-	-	-	-	-	-	-	-
F18	MOR*	-	-	-	-	-	-	-	-	-	-	-	-
F20	ECU*	-	-	-	-	-	-	-	-	-	-	-	-
F25	at SIUE*	-	-	-	-	-	-	-	-	-	-	-	-
F27	at EIU*	-	-	-	-	-	-	-	-	-	-	-	-
M3	OVC	-	-	-	-	-	-	-	-	-	-	-	-
M4	OVC	-	-	-	-	-	-	-	-	-	-	-	-
M5	OVC	-	-	-	-	-	-	-	-	-	-	-	-
M6	OVC	-	-	-	-	-	-	-	-	-	-	-	-

JOHNSON CAREER STATISTICS													
Year	GP	GS	Min	Avg	Total FG	FGA Pct	3-Point FG	3-Point FGA Pct	F-Throw FT	FTA Pct	Rebounds Off	Def	Tot Avg
2019-20	20	0	77	3.9	7	19 .368	0	0 .000	2	4 .500	7	16	23 1.2
2020-21	1	0	6	6.0	2	2 1.000	0	0 .000	0	0 .000	0	3	3 3.0
TOTAL	21	0	83	4.0	9	21 .429	0	0 .000	2	4 .500	7	19	26 1.2

PLAYER SUMMARIES



11

DASIA YOUNG

So. | F | 5-11 | Jonesboro, Ark. | Nettleton HS

SEASON HIGHS

Points	12 at #5 Louisville (12/6/20)
FG Made	4 at #5 Louisville (12/6/20)
FG Att.	8 at Southeast Missouri (12/18/20)
3PG Made	2 at #5 Louisville (12/6/20)
3FG Att.	3 at #5 Louisville (12/6/20)
FT Made	2 at #5 Louisville (12/6/20)
FT Att.	4 at #5 Louisville (12/6/20)
Rebounds	9 at Southeast Missouri (12/18/20)
Assists	3, 2x, at Southeast Missouri (12/18/20)
Steals	N/A
Blocks	1, 2x, at Southeast Missouri (12/18/20)
Minutes	36 at #5 Louisville (12/6/20)

CAREER HIGHS

Points	15 at SIUE (1/25/20)
FG Made	6, 2x, last at Murray State (1/2/20)
FG Att.	11 at Murray State (1/2/20)
3PG Made	2, 2x, at #5 Louisville (12/6/20)
3FG Att.	4 vs. Murray State (3/4/20)
FT Made	4 at SIUE (1/25/20)
FT Att.	5 vs. Tennessee State (1/9/20)
Rebounds	9 at Southeast Missouri (12/18/20)
Assists	6, 2x, last vs. Eastern Illinois (3/6/20)
Steals	2, 2x, last at Tennessee Tech (2/20/20)
Blocks	1, 6x, at Southeast Missouri (12/18/20)
Minutes	38 vs. Eastern Illinois (3/6/20)

MISCELLANEOUS CAREER STATISTICS

Games Played	34	Double-Doubles	0
Games Started	23	10+ Points	9
Led Team In Scoring	0	20+ Points	0
Led Team In Rebounding	1	5+ Rebounds	11
Led Team In Assists	2	10+ Rebounds	0
Led Team In Steals	2	5+ Assists	2
Led Team In Blocks	1	3+ Steals	0

YOUNG GAME-BY-GAME STATISTICS

Date	Opp	GS	Min	FG	3FG	FT	O-D-R	PF	A	T	S	B	PTS
D6	at LOU	*	36	4-7	2-3	2-4	0-5-5	4	2	0	0	0	12
D8	at SAM	*	32	2-6	0-3	1-3	1-4-5	3	3	3	0	1	5
D18	at SEMO*	*	33	2-8	0-0	0-0	5-4-9	2	3	0	0	1	4
D30	at JSU*	-	-	-	-	-	-	-	-	-	-	-	-
J2	BEL*	-	-	-	-	-	-	-	-	-	-	-	-
J7	at TSU*	-	-	-	-	-	-	-	-	-	-	-	-
J9	at BEL*	-	-	-	-	-	-	-	-	-	-	-	-
J14	AP*	-	-	-	-	-	-	-	-	-	-	-	-
J16	MUR*	-	-	-	-	-	-	-	-	-	-	-	-
J21	at ECU*	-	-	-	-	-	-	-	-	-	-	-	-
J23	at MOR*	-	-	-	-	-	-	-	-	-	-	-	-
J28	EIU*	-	-	-	-	-	-	-	-	-	-	-	-
J30	SIUE*	-	-	-	-	-	-	-	-	-	-	-	-
F1	SEMO*	-	-	-	-	-	-	-	-	-	-	-	-
F4	JSU*	-	-	-	-	-	-	-	-	-	-	-	-
F6	TTU*	-	-	-	-	-	-	-	-	-	-	-	-
F11	at AP*	-	-	-	-	-	-	-	-	-	-	-	-
F13	at MUR*	-	-	-	-	-	-	-	-	-	-	-	-
F18	MOR*	-	-	-	-	-	-	-	-	-	-	-	-
F20	ECU*	-	-	-	-	-	-	-	-	-	-	-	-
F25	at SIUE*	-	-	-	-	-	-	-	-	-	-	-	-
F27	at EIU*	-	-	-	-	-	-	-	-	-	-	-	-
M3	OVC	-	-	-	-	-	-	-	-	-	-	-	-
M4	OVC	-	-	-	-	-	-	-	-	-	-	-	-
M5	OVC	-	-	-	-	-	-	-	-	-	-	-	-
M6	OVC	-	-	-	-	-	-	-	-	-	-	-	-

YOUNG CAREER STATISTICS

					Total			3-Point			F-Throw			Rebounds								Scoring		
Year	GP	GS	Min	Avg	FG	FGA	Pct	FG	FGA	Pct	FT	FTA	Pct	Off	Def	Total	Avg	PF	Ast	TO	Blk	Stl	Pts	Avg
2019-20	31	20	718	23.2	71	169	.420	14	40	.350	37	59	.627	49	43	92	3.0	85	45	44	6	21	193	6.2
2020-21	3	3	101	33.7	8	21	.381	2	6	.333	3	7	.429	6	13	19	6.3	9	8	3	2	0	21	7.0
TOTAL	34	23	819	24.1	79	190	.416	16	46	.348	40	66	.606	55	56	111	3.3	94	53	48	8	21	214	6.3



13

DEMI BURDICK

Sr. | F | 6-2 | Marshall, Ill. | Marshall HS

SEASON HIGHS

Points	4, 2x, at Southeast Missouri (12/18/20)
FG Made	2, 2x, at Southeast Missouri (12/18/20)
FG Att.	5 at Southeast Missouri (12/18/20)
3PG Made	N/A
3FG Att.	1 at #5 Louisville (12/6/20)
FT Made	N/A
FT Att.	N/A
Rebounds	5 at Samford (12/8/20)
Assists	2 at Samford (12/8/20)
Steals	N/A
Blocks	N/A
Minutes	18 at Samford (12/8/20)

CAREER HIGHS

Points	14 vs. Murray State (3/4/20)
FG Made	6 vs. Murray State (3/4/20)
FG Att.	8 vs. Murray State (3/4/20)
3PG Made	2, 2x, last at Illinois State (11/30/19)
3FG Att.	4 at Northwestern (11/25/18)
FT Made	7 vs. Austin Peay (1/18/20)
FT Att.	8 vs. Austin Peay (1/18/20)
Rebounds	9 vs. Christian Brothers (11/21/18)
Assists	4 at Murray State (1/2/20)
Steals	3 vs. Murray State (3/4/20)
Blocks	3 vs. Mississippi Valley (12/29/18)
Minutes	30 vs. Belmont (3/9/20)

MISCELLANEOUS CAREER STATISTICS

Games Played	79	Double-Doubles	0
Games Started	17	10+ Points	4
Led Team In Scoring	0	20+ Points	0
Led Team In Rebounding	2	5+ Rebounds	14
Led Team In Assists	2	10+ Rebounds	0
Led Team In Steals	1	5+ Assists	1
Led Team In Blocks	5	3+ Steals	1

BURDICK GAME-BY-GAME STATISTICS

Date	Opp	GS	Min	FG	3FG	FT	O-D-R	PF	A	T	S	B	PTS
D6	at LOU	11	0-1	0-1	0-0	0-2-2	1	0	1	0	0	0	0
D8	at SAM	18	2-3	0-0	0-0	3-2-5	0	2	1	0	0	0	4
D18	at SEMO*	8	2-5	0-0	0-0	0-1-1	1	0	0	0	0	0	4
D30	at JSU*	-	-	-	-	-	-	-	-	-	-	-	-
J2	BEL*	-	-	-	-	-	-	-	-	-	-	-	-
J7	at TSU*	-	-	-	-	-	-	-	-	-	-	-	-
J9	at BEL*	-	-	-	-	-	-	-	-	-	-	-	-
J14	AP*	-	-	-	-	-	-	-	-	-	-	-	-
J16	MUR*	-	-	-	-	-	-	-	-	-	-	-	-
J21	at ECU*	-	-	-	-	-	-	-	-	-	-	-	-
J23	at MOR*	-	-	-	-	-	-	-	-	-	-	-	-
J28	EIU*	-	-	-	-	-	-	-	-	-	-	-	-
J30	SIUE*	-	-	-	-	-	-	-	-	-	-	-	-
F1	SEMO*	-	-	-	-	-	-	-	-	-	-	-	-
F4	JSU*	-	-	-	-	-	-	-	-	-	-	-	-
F6	TTU*	-	-	-	-	-	-	-	-	-	-	-	-
F11	at AP*	-	-	-	-	-	-	-	-	-	-	-	-
F13	at MUR*	-	-	-	-	-	-	-	-	-	-	-	-
F18	MOR*	-	-	-	-	-	-	-	-	-	-	-	-
F20	ECU*	-	-	-	-	-	-	-	-	-	-	-	-
F25	at SIUE*	-	-	-	-	-	-	-	-	-	-	-	-
F27	at EIU*	-	-	-	-	-	-	-	-	-	-	-	-
M3	OVC	-	-	-	-	-	-	-	-	-	-	-	-
M4	OVC	-	-	-	-	-	-	-	-	-	-	-	-
M5	OVC	-	-	-	-	-	-	-	-	-	-	-	-
M6	OVC	-	-	-	-	-	-	-	-	-	-	-	-

BURDICK CAREER STATISTICS

Year	GP	GS	Min	Avg	Total			3-Point			F-Throw			Rebounds				PF	Ast	To	Blk	Stl	Scoring	
					FG	FGA	Pct	FG	FGA	Pct	FT	FTA	Pct	Off	Def	Tot	Avg						Pts	Avg
2017-18	22	1	97	4.4	10	24	.417	1	4	.250	2	8	.250	6	11	17	0.8	15	3	9	3	4	23	1.0
2018-19	27	0	226	8.4	32	74	.432	4	23	.174	9	16	.563	27	43	70	2.6	36	16	11	11	11	77	2.9
2019-20	27	16	419	15.5	49	105	.467	6	24	.250	17	22	.773	22	61	83	3.1	42	26	29	17	13	121	4.5
2020-21	3	0	38	12.7	4	9	.444	0	1	.000	0	0	.000	3	5	8	2.7	2	2	0	0	0	8	2.7
TOTAL	79	17	780	9.9	95	212	.448	11	52	.212	28	46	.609	58	120	178	2.3	94	54	31	28	229	2.9	10

PLAYER SUMMARIES



14

ZAIRE HICKS

R-Jr. | G | 5-7 | Memphis, Tenn. | White Station HS

SEASON HIGHS

Points	2 at Southeast Missouri (12/18/20)
FG Made	1 at Southeast Missouri (12/18/20)
FG Att.	1 at Southeast Missouri (12/18/20)
3PG Made	N/A
3PG Att.	N/A
FT Made	N/A
FT Att.	N/A
Rebounds	N/A
Assists	N/A
Steals	1 at Southeast Missouri (12/18/20)
Blocks	N/A
Minutes	5 at Southeast Missouri (12/18/20)

CAREER HIGHS

Points	19, 2x, last vs. Murray State (3/7/19)
FG Made	7, 2x, last vs. Murray State (3/7/19)
FG Att.	17 vs. Jacksonville State (2/7/19)
3PG Made	4 vs. Samford (11/6/18)
3PG Att.	9 at Eastern Kentucky (1/17/19)
FT Made	6 vs. Tennessee State (3/2/19)
FT Att.	9 at Southeast Missouri (2/24/18)
Rebounds	7 vs. Murray State (3/7/19)
Assists	6, 2x, last vs. Murray State (3/7/19)
Steals	4, 2x, last at Austin peay (2/23/19)
Blocks	1, 3x, last vs. Jacksonville State (2/7/19)
Minutes	39 vs. Morehead State (3/8/19)

MISCELLANEOUS CAREER STATISTICS

Games Played	67	Double-Doubles	0
Games Started	34	10+ Points	18
Led Team In Scoring	4	20+ Points	0
Led Team In Rebounding	1	5+ Rebounds	4
Led Team In Assists	9	10+ Rebounds	0
Led Team In Steals	12	5+ Assists	4
Led Team In Blocks	1	3+ Steals	8

HICKS GAME-BY-GAME STATISTICS

Date	Opp	GS	Min	FG	3FG	FT	O-D-R	PF	A	TO	S	B	PTS
D6	at LOU	-	-	-	-	DNP	-	-	-	-	-	-	-
D8	at SAM	-	-	-	-	DNP	-	-	-	-	-	-	-
D18	at SEMO*	5	1-1	0-0	0-0	0-0-0	1	0	0	1	0	2	-
D30	at JSU*	-	-	-	-	-	-	-	-	-	-	-	-
J2	BEL*	-	-	-	-	-	-	-	-	-	-	-	-
J7	at TSU*	-	-	-	-	-	-	-	-	-	-	-	-
J9	at BEL*	-	-	-	-	-	-	-	-	-	-	-	-
J14	AP*	-	-	-	-	-	-	-	-	-	-	-	-
J16	MUR*	-	-	-	-	-	-	-	-	-	-	-	-
J21	at ECU*	-	-	-	-	-	-	-	-	-	-	-	-
J23	at MOR*	-	-	-	-	-	-	-	-	-	-	-	-
J28	EIU*	-	-	-	-	-	-	-	-	-	-	-	-
J30	SIUE*	-	-	-	-	-	-	-	-	-	-	-	-
F1	SEMO*	-	-	-	-	-	-	-	-	-	-	-	-
F4	JSU*	-	-	-	-	-	-	-	-	-	-	-	-
F6	TTU*	-	-	-	-	-	-	-	-	-	-	-	-
F11	at AP*	-	-	-	-	-	-	-	-	-	-	-	-
F13	at MUR*	-	-	-	-	-	-	-	-	-	-	-	-
F18	MOR*	-	-	-	-	-	-	-	-	-	-	-	-
F20	ECU*	-	-	-	-	-	-	-	-	-	-	-	-
F25	at SIUE*	-	-	-	-	-	-	-	-	-	-	-	-
F27	at EIU*	-	-	-	-	-	-	-	-	-	-	-	-
M3	OVC	-	-	-	-	-	-	-	-	-	-	-	-
M4	OVC	-	-	-	-	-	-	-	-	-	-	-	-
M5	OVC	-	-	-	-	-	-	-	-	-	-	-	-
M6	OVC	-	-	-	-	-	-	-	-	-	-	-	-
		-	-	-	-	-	-	-	-	-	-	-	-
		-	-	-	-	-	-	-	-	-	-	-	-

HICKS CAREER STATISTICS

					Total		3-Point		F-Throw		Rebounds							Scoring						
Year	GP	GS	Min	Avg	FG	FGA	Pct	FG	FGA	FT	FTA	Pct	Off	Def	Tot	Avg	PF	Ass	TO	Blk	Stl	Pts	Avg	
2017-18	32	1	344	10.8	28	85	.329	14	40	350	23	37	622	15	28	43	1.3	36	29	23	2	45	93	2.9
2018-19	32	31	816	25.5	100	286	.350	41	132	311	35	45	778	25	46	71	2.2	63	77	43	2	24	276	8.6
2019-20	2	2	64	32.0	7	18	.389	2	10	200	3	5	600	2	3	5	2.5	7	4	4	0	3	19	9.5
2020-21	1	0	5	5.0	1	1	1.000	0	0	.000	0	0	.000	0	0	0	0.0	1	0	0	0	1	2	2.0
TOTAL	67	34	1229	18.3	136	390	.349	57	182	313	61	87	.701	42	77	119	1.8	107	110	70	3	73	390	5.8



20

CHELSEY PERRY

Sr. | F | 6-2 | Middleton, Tenn. | Middleton HS

SEASON HIGHS

Points	31 at Samford (12/8/20)
FG Made	14 at Samford (12/8/20)
FG Att.	22 at Samford (12/8/20)
3PG Made	3, 2x, last at Samford (12/8/20)
3PG Att.	7 at #5 Louisville (12/6/20)
FT Made	8 at Southeast Missouri (12/18/20)
FT Att.	10 at Southeast Missouri (12/18/20)
Rebounds	11 at Samford (12/8/20)
Assists	3 at Southeast Missouri (12/18/20)
Steals	3 at Samford (12/8/20)
Blocks	2, 2x, last at Samford (12/8/20)
Minutes	40 at Samford (12/8/20)

CAREER HIGHS

Points	42 vs. Lipscomb (12/16/19)
FG Made	17 vs. Lipscomb (12/16/19)
FG Att.	29 at Southeast Missouri (2/13/20)
3PG Made	5 vs. Tennessee Tech (2/9/19)
3PG Att.	10 at Southeast Missouri (2/13/20)
FT Made	9, 3x, last vs. Southeast Missouri (2/29/20)
FT Att.	11 vs. Southeast Missouri (2/29/20)
Rebounds	14 at Austin Peay (1/4/20)
Assists	6 vs. Southeast Missouri (2/29/20)
Steals	5, 2x, last at Southeast Missouri (2/13/20)
Blocks	8 vs. IUPUI (11/25/19)
Minutes	44 vs. #6 Louisville (12/19/19)

MISCELLANEOUS CAREER STATISTICS

Games Played	101	Double-Doubles	11
Games Started	99	10+ Points	72
Led Team In Scoring	48	20+ Points	31
Led Team In Rebounding	43	5+ Rebounds	70
Led Team In Assists	8	10+ Rebounds	14
Led Team In Steals	23	3+ Steals	30
Led Team In Blocks	72	3+ Blocks	34

PERRY GAME-BY-GAME STATISTICS

Date	Opp	GS	Min	FG	3FG	FT	O-D-R	PF	A	TO	S	B	PTS
D6	at LOU	*	30	8-19	3-7	7-8	0-4-4	4	2	1	1	2	26
D8	at SAM	*	40	14-22	3-5	0-0	3-8-11	2	1	2	3	2	31
D18	at SEMO*	*	39	9-17	2-4	8-10	1-6-7	4	3	4	1	0	28
D30	at JSU*	-	-	-	-	-	-	-	-	-	-	-	-
J2	BEL*	-	-	-	-	-	-	-	-	-	-	-	-
J7	at TSU*	-	-	-	-	-	-	-	-	-	-	-	-
J9	at BEL*	-	-	-	-	-	-	-	-	-	-	-	-
J14	AP*	-	-	-	-	-	-	-	-	-	-	-	-
J16	MUR*	-	-	-	-	-	-	-	-	-	-	-	-
J21	at ECU*	-	-	-	-	-	-	-	-	-	-	-	-
J23	at MOR*	-	-	-	-	-	-	-	-	-	-	-	-
J28	EIU*	-	-	-	-	-	-	-	-	-	-	-	-
J30	SIUE*	-	-	-	-	-	-	-	-	-	-	-	-
F1	SEMO*	-	-	-	-	-	-	-	-	-	-	-	-
F4	JSU*	-	-	-	-	-	-	-	-	-	-	-	-
F6	TTU*	-	-	-	-	-	-	-	-	-	-	-	-
F11	at AP*	-	-	-	-	-	-	-	-	-	-	-	-
F13	at MUR*	-	-	-	-	-	-	-	-	-	-	-	-
F18	MOR*	-	-	-	-	-	-	-	-	-	-	-	-
F20	ECU*	-	-	-	-	-	-	-	-	-	-	-	-
F25	at SIUE*	-	-	-	-	-	-	-	-	-	-	-	-
F27	at EIU*	-	-	-	-	-	-	-	-	-	-	-	-
M3	OVC	-	-	-	-	-	-	-	-	-	-	-	-
M4	OVC	-	-	-	-	-	-	-	-	-	-	-	-
M5	OVC	-	-	-	-	-	-	-	-	-	-	-	-
M6	OVC	-	-	-	-	-	-	-	-	-	-	-	-
		-	-	-	-	-	-	-	-	-	-	-	-
		-	-	-	-	-	-	-	-	-	-	-	-

PERRY CAREER STATISTICS

Year	GP	GS	Min	Avg	Total	FG	FGA	Pct	3-Point	F-Throw	Rebounds	PF	Ass	TO	Blk	Stl	Scoring	
2017-18	34	33	896	26.4	137	325	422		16	50	320	91	105	867	75	119	194	5.7
2018-19	32	31	787	24.6	146	325	449		31	89	348	61	78	782	50	127	177	5.5
2019-20	32	32	1095	34.2	286	570	502		47	122	385	121	141	858	54	200	254	7.9
2020-21	3	3	108	36.0	31	58	534		8	16	500	15	18	833	4	18	22	7.3
TOTAL	101	99	2886	28.6	600	1278	469		102	277	368	288	342	842	183	464	647	6.4

PLAYER SUMMARIES



21

MADDIE WALDROP

Sr. | F | 6-2 | Murray, Ky. | Murray HS

SEASON HIGHS

Points	8 at #5 Louisville [12/6/20]
FG Made	3 at #5 Louisville [12/6/20]
FG Att.	8 at Southeast Missouri [12/18/20]
3PG Made	N/A
3FG Att.	3 at #5 Louisville [12/6/20]
FT Made	2 at #5 Louisville [12/6/20]
FT Att.	3 at #5 Louisville [12/6/20]
Rebounds	8 at #5 Louisville [12/6/20]
Assists	5 at Samford [12/8/20]
Steals	2 at Samford [12/8/20]
Blocks	1 at Samford [12/8/20]
Minutes	33 at #5 Louisville [12/6/20]

CAREER HIGHS

Points	26 at Morehead State [2/1/20]
FG Made	10 at Morehead State [2/1/20]
FG Att.	16 at Austin Peay [1/4/20]
3PG Made	3, 2x, last at Belmont [2/2/19]
3FG Att.	8 at Belmont [2/2/19]
FT Made	10, 2x, last at Southern Illinois [12/3/19]
FT Att.	15 at Tennessee State [1/31/19]
Rebounds	16 vs. Tennessee State [3/2/19]
Assists	6, 3x, last vs. Eastern Illinois [3/6/20]
Steals	4, 3x, last at Austin Peay [1/4/20]
Blocks	4, 2x, last vs. Southeast Missouri [2/29/20]
Minutes	41 vs. #6 Louisville [12/19/20]

MISCELLANEOUS CAREER STATISTICS

Games Played	98	Double-Doubles	11
Games Started	65	10+ Points	34
Led Team In Scoring	6	20+ Points	7
Led Team In Rebounding	38	5+ Rebounds	70
Led Team In Assists	12	10+ Rebounds	18
Led Team In Steals	9	5+ Assists	7
Led Team In Blocks	21	3+ Blocks	4

WALDROP GAME-BY-GAME STATISTICS

Date	Opp	GS	Min	FG	3FG	FT	O-D-R	PF	A	T	S	B	PTS
D6	at LOU	*	33	3-6	0-3	2-3	2-6-8	3	1	2	0	0	8
D8	at SAM	*	25	2-5	0-0	0-2	1-5-6	4	5	1	2	1	4
D18	at SEMO*	*	27	2-8	0-0	2-4	0-7-7	2	1	2	0	1	6
D30	at JSU*	-	-	-	-	-	-	-	-	-	-	-	-
J2	BEL*	-	-	-	-	-	-	-	-	-	-	-	-
J7	at TSU*	-	-	-	-	-	-	-	-	-	-	-	-
J9	at BEL*	-	-	-	-	-	-	-	-	-	-	-	-
J14	AP*	-	-	-	-	-	-	-	-	-	-	-	-
J16	MUR*	-	-	-	-	-	-	-	-	-	-	-	-
J21	at ECU*	-	-	-	-	-	-	-	-	-	-	-	-
J23	at MOR*	-	-	-	-	-	-	-	-	-	-	-	-
J28	EIU*	-	-	-	-	-	-	-	-	-	-	-	-
J30	SIUE*	-	-	-	-	-	-	-	-	-	-	-	-
F1	SEMO*	-	-	-	-	-	-	-	-	-	-	-	-
F4	JSU*	-	-	-	-	-	-	-	-	-	-	-	-
F6	TTU*	-	-	-	-	-	-	-	-	-	-	-	-
F11	at AP*	-	-	-	-	-	-	-	-	-	-	-	-
F13	at MUR*	-	-	-	-	-	-	-	-	-	-	-	-
F18	MOR*	-	-	-	-	-	-	-	-	-	-	-	-
F20	ECU*	-	-	-	-	-	-	-	-	-	-	-	-
F25	at SIUE*	-	-	-	-	-	-	-	-	-	-	-	-
F27	at EIU*	-	-	-	-	-	-	-	-	-	-	-	-
M3	OVC	-	-	-	-	-	-	-	-	-	-	-	-
M4	OVC	-	-	-	-	-	-	-	-	-	-	-	-
M5	OVC	-	-	-	-	-	-	-	-	-	-	-	-
M6	OVC	-	-	-	-	-	-	-	-	-	-	-	-

WALDROP CAREER STATISTICS

Year	GP	GS	Min	Avg	Total		3-Point		F-Throw		Rebounds		PF	Ast	To	Blk	Stl	Scoring						
					FG	FGA	Pct	FG	FGA	Pct	FT	FGA						Pct	Off	Def	Total	Pts	Avg	
2017-18	34	3	738	21.7	68	146	.466	15	49	.306	44	56	.786	51	39	51	19	17	195	5.7				
2018-19	32	31	830	25.9	76	192	.396	17	58	.293	87	116	.750	80	154	234	7.3	81	46	51	22	256	8.0	
2019-20	29	28	928	32.0	126	259	.486	19	60	.317	98	138	.710	57	170	227	7.8	73	78	62	22	369	12.7	
2020-21	3	3	85	28.3	7	19	.368	0	3	.000	4	9	.444	3	18	21	7.0	9	7	5	1	3	18	6.0
TOTAL	98	65	2581	26.3	277	616	.450	51	170	.300	233	319	.730	191	478	669	6.8	254	170	170	64	81	838	8.6



22

DAMIAH GRIFFIN

R-Jr. | F | 6-0 | Memphis, Tenn. | White Station HS

SEASON HIGHS

Points	8 at Samford [12/8/20]
FG Made	4 at Samford [12/8/20]
FG Att.	4 at Samford [12/8/20]
3PG Made	N/A
3FG Att.	N/A
FT Made	N/A
FT Att.	N/A
Rebounds	2 at #5 Louisville [12/6/20]
Assists	1 at #5 Louisville [12/6/20]
Steals	N/A
Blocks	N/A
Minutes	12 at #5 Louisville [12/6/20]

CAREER HIGHS

Points	25 vs. #6 Louisville [12/19/19]
FG Made	9 vs. Chattanooga [12/8/19]
FG Att.	19 vs. Chattanooga [12/8/19]
3PG Made	3 at Murray State [1/2/20]
3FG Att.	5, 2x, last at Murray State [1/2/20]
FT Made	10 at #23 Gonzaga [11/14/19]
FT Att.	13 vs. #6 Louisville [12/19/19]
Rebounds	10 vs. #6 Louisville [12/19/19]
Assists	3, 5x, last vs. IUPUI [11/25/19]
Steals	5 vs. Christian Brothers [11/21/18]
Blocks	2 vs. Murray State [3/7/19]
Minutes	46 vs. #6 Louisville [12/19/19]

MISCELLANEOUS CAREER STATISTICS

Games Played	47	Double-Doubles	1
Games Started	22	10+ Points	20
Led Team In Scoring	5	20+ Points	1
Led Team In Rebounding	7	5+ Rebounds	18
Led Team In Assists	1	10+ Rebounds	1
Led Team In Steals	8	5+ Assists	0
Led Team In Blocks	7	3+ Steals	6

GRIFFIN GAME-BY-GAME STATISTICS

Date	Opp	GS	Min	FG	3FG	FT	O-D-R	PF	A	T	S	B	PTS
D6	at LOU		12	0-0	0-0	0-0	0-2-2	0	1	2	0	0	0
D8	at SAM		6	4-4	0-0	0-0	0-0-0	0	0	1	0	0	8
D18	at SEMO*		9	1-2	0-0	0-0	0-1-1	1	0	0	0	0	2
D30	at JSU*	-	-	-	-	-	-	-	-	-	-	-	-
J2	BEL*	-	-	-	-	-	-	-	-	-	-	-	-
J7	at TSU*	-	-	-	-	-	-	-	-	-	-	-	-
J9	at BEL*	-	-	-	-	-	-	-	-	-	-	-	-
J14	AP*	-	-	-	-	-	-	-	-	-	-	-	-
J16	MUR*	-	-	-	-	-	-	-	-	-	-	-	-
J21	at ECU*	-	-	-	-	-	-	-	-	-	-	-	-
J23	at MOR*	-	-	-	-	-	-	-	-	-	-	-	-
J28	EIU*	-	-	-	-	-	-	-	-	-	-	-	-
J30	SIUE*	-	-	-	-	-	-	-	-	-	-	-	-
F1	SEMO*	-	-	-	-	-	-	-	-	-	-	-	-
F4	JSU*	-	-	-	-	-	-	-	-	-	-	-	-
F6	TTU*	-	-	-	-	-	-	-	-	-	-	-	-
F11	at AP*	-	-	-	-	-	-	-	-	-	-	-	-
F13	at MUR*	-	-	-	-	-	-	-	-	-	-	-	-
F18	MOR*	-	-	-	-	-	-	-	-	-	-	-	-
F20	ECU*	-	-	-	-	-	-	-	-	-	-	-	-
F25	at SIUE*	-	-	-	-	-	-	-	-	-	-	-	-
F27	at EIU*	-	-	-	-	-	-	-	-	-	-	-	-
M3	OVC	-	-	-	-	-	-	-	-	-	-	-	-
M4	OVC	-	-	-	-	-	-	-	-	-	-	-	-
M5	OVC	-	-	-	-	-	-	-	-	-	-	-	-
M6	OVC	-	-	-	-	-	-	-	-	-	-	-	-

GRIFFIN CAREER STATISTICS

Year	GP	GS	Min	Avg	Total			3-Point			F-Throw			Rebounds			PF	Ast	TO	Blk	Stl	Scoring		
					FG	FGA	Pct	FG	FGA	Pct	FT	FTA	Pct	Off	Def	Tot						Avg	Pts	Avg
2017-18																								
2018-19	32	10	517	16.2	102	209	.488	9	33	.273	47	63	74.6	45	68	113	3.5	79	19	38	11	39	260	8.1
2019-20	12	12	345	28.8	50	132	.379	9	28	.321	35	43	81.4	25	41	66	5.5	20	14	21	4	18	144	12.0
2020-21	3	0	27	9.0	5	6	.833	0	0	.000	0	0	.000	0	3	3	1.0	1	1	3	0	10	3.3	
TOTAL	47	22	889	18.9	157	347	.452	18	61	.295	82	106	77.4	70	112	182	3.9	100	34	62	15	57	414	8.8

PLAYER SUMMARIES



23

HAYLEY HARRISON

R-Fr. | G | 5-10 | Winchester, Ky. | George Rogers Clark HS

SEASON HIGHS		CAREER HIGHS	
Points	10 at #5 Louisville (12/6/20)	Points	10 at #5 Louisville (12/6/20)
FG Made	2, 2x, at Southeast Missouri (12/18/20)	FG Made	2, 2x, at Southeast Missouri (12/18/20)
FG Att.	4, 2x, last at Samford (12/8/20)	FG Att.	4, 2x, last at Samford (12/8/20)
3PG Made	2 at #5 Louisville (12/6/20)	3PG Made	2 at #5 Louisville (12/6/20)
3FG Att.	2 at #5 Louisville (12/6/20)	3FG Att.	2 at #5 Louisville (12/6/20)
FT Made	4 at #5 Louisville (12/6/20)	FT Made	4 at #5 Louisville (12/6/20)
FT Att.	6 at #5 Louisville (12/6/20)	FT Att.	6 at #5 Louisville (12/6/20)
Rebounds	3 at Southeast Missouri (12/18/20)	Rebounds	3 at Southeast Missouri (12/18/20)
Assists	1 at Samford (12/8/20)	Assists	1 at Samford (12/8/20)
Steals	1, 2x, at Southeast Missouri (12/18/20)	Steals	1, 2x, at Southeast Missouri (12/18/20)
Blocks	N/A	Blocks	N/A
Minutes	26 at Samford (12/6/20)	Minutes	26 at Samford (12/6/20)

MISCELLANEOUS CAREER STATISTICS			
Games Played	3	Double-Doubles	0
Games Started	3	10+ Points	1
Led Team In Scoring	0	20+ Points	0
Led Team In Rebounding	0	5+ Rebounds	0
Led Team In Assists	0	10+ Rebounds	0
Led Team In Steals	1	5+ Assists	0
Led Team In Blocks	0	3+ Steals	0

HARRISON GAME-BY-GAME STATISTICS																
Date	Opp	GS	Min	FG	3FG	FT	O-D-R	PF	A	T	S	B	PTS			
D6	at LOU	*	18	2-4	2-2	4-6	1-1-2	2	0	2	1	0	10			
D8	at SAM	*	26	1-4	0-1	2-2	0-1-1	3	1	3	0	0	4			
D18	at SEMO*	*	19	2-2	1-1	0-0	0-3-3	1	1	4	1	0	5			
D30	at JSU*	-	-	-	-	-	-	-	-	-	-	-	-			
J2	BEL*	-	-	-	-	-	-	-	-	-	-	-	-			
J7	at TSU*	-	-	-	-	-	-	-	-	-	-	-	-			
J9	at BEL*	-	-	-	-	-	-	-	-	-	-	-	-			
J14	AP*	-	-	-	-	-	-	-	-	-	-	-	-			
J16	MUR*	-	-	-	-	-	-	-	-	-	-	-	-			
J21	at ECU*	-	-	-	-	-	-	-	-	-	-	-	-			
J23	at MOR*	-	-	-	-	-	-	-	-	-	-	-	-			
J28	EIU*	-	-	-	-	-	-	-	-	-	-	-	-			
J30	SIUE*	-	-	-	-	-	-	-	-	-	-	-	-			
F1	SEMO*	-	-	-	-	-	-	-	-	-	-	-	-			
F4	JSU*	-	-	-	-	-	-	-	-	-	-	-	-			
F6	TTU*	-	-	-	-	-	-	-	-	-	-	-	-			
F11	at AP*	-	-	-	-	-	-	-	-	-	-	-	-			
F13	at MUR*	-	-	-	-	-	-	-	-	-	-	-	-			
F18	MOR*	-	-	-	-	-	-	-	-	-	-	-	-			
F20	ECU*	-	-	-	-	-	-	-	-	-	-	-	-			
F25	at SIUE*	-	-	-	-	-	-	-	-	-	-	-	-			
F27	at EIU*	-	-	-	-	-	-	-	-	-	-	-	-			
M3	OVC	-	-	-	-	-	-	-	-	-	-	-	-			
M4	OVC	-	-	-	-	-	-	-	-	-	-	-	-			
M5	OVC	-	-	-	-	-	-	-	-	-	-	-	-			
M6	OVC	-	-	-	-	-	-	-	-	-	-	-	-			

HARRISON CAREER STATISTICS																
Year	GP	GS	Min	Avg	FG	FGA	Pct	3-Point	F-Throw	Rebounds	PF	AST	TO	BLK	STL	Scoring
2019-20	-	-	-	-	-	-	-	-	Redshirted	-	-	-	-	-	-	-
2020-21	3	3	63	21.0	5	10	.500	3	4	7.50	6	8	7.50	1	5	6
TOTAL	3	3	63	21.0	5	10	.500	3	4	7.50	6	8	7.50	1	5	6



31

KYANNAH GRANT

Jr. | G | 5-7 | Choctaw, Miss. | Choctaw Central HS

SEASON HIGHS		CAREER HIGHS	
Points	2 at Southeast Missouri (12/18/20)	Points	18 vs. Eastern Illinois (2/15/20)
FG Made	N/A	FG Made	6, 3x, last vs. Eastern Illinois (2/15/20)
FG Att.	1 at Southeast Missouri (12/18/20)	FG Att.	12 vs. #6 Louisville (12/19/19)
3PG Made	N/A	3PG Made	5 at Tennessee Tech (2/20/20)
3FG Att.	1 at Southeast Missouri (12/18/20)	3FG Att.	7 at Murray State (1/16/20)
FT Made	2 at Southeast Missouri (12/18/20)	FT Made	5 at Austin Peay (1/4/20)
FT Att.	2 at Southeast Missouri (12/18/20)	FT Att.	6 at Austin Peay (1/4/20)
Rebounds	N/A	Rebounds	8 at Eastern Kentucky (1/30/20)
Assists	1 at Southeast Missouri (12/18/20)	Assists	9 vs. Southeast Missouri (2/29/20)
Steals	N/A	Steals	5, 2x, last vs. Belmont (1/11/20)
Blocks	N/A	Blocks	2, 2x, last vs. SIUE (2/27/20)
Minutes	3 at Southeast Missouri (12/18/20)	Minutes	46 vs. #6 Louisville (12/19/19)

MISCELLANEOUS CAREER STATISTICS			
Games Played	56	Double-Doubles	0
Games Started	24	10+ Points	7
Led Team In Scoring	0	20+ Points	0
Led Team In Rebounding	0	5+ Rebounds	4
Led Team In Assists	16	10+ Rebounds	0
Led Team In Steals	10	5+ Assists	8
Led Team In Blocks	2	3+ Steals	6

GRANT GAME-BY-GAME STATISTICS																
Date	Opp	GS	Min	FG	3FG	FT	O-D-R	PF	A	T	S	B	PTS			
D6	at LOU	-	-	-	-	DNP	-	-	-	-	-	-	-			
D8	at SAM	-	-	-	-	DNP	-	-	-	-	-	-	-			
D18	at SEMO*	3	0-1	0-1	2-2	0-0-0	0	1	1	0	0	0	2			
D30	at JSU*	-	-	-	-	-	-	-	-	-	-	-	-			
J2	BEL*	-	-	-	-	-	-	-	-	-	-	-	-			
J7	at TSU*	-	-	-	-	-	-	-	-	-	-	-	-			
J9	at BEL*	-	-	-	-	-	-	-	-	-	-	-	-			
J14	AP*	-	-	-	-	-	-	-	-	-	-	-	-			
J16	MUR*	-	-	-	-	-	-	-	-	-	-	-	-			
J21	at ECU*	-	-	-	-	-	-	-	-	-	-	-	-			
J23	at MOR*	-	-	-	-	-	-	-	-	-	-	-	-			
J28	EIU*	-	-	-	-	-	-	-	-	-	-	-	-			
J30	SIUE*	-	-	-	-	-	-	-	-	-	-	-	-			
F1	SEMO*	-	-	-	-	-	-	-	-	-	-	-	-			
F4	JSU*	-	-	-	-	-	-	-	-	-	-	-	-			
F6	TTU*	-	-	-	-	-	-	-	-	-	-	-	-			
F11	at AP*	-	-	-	-	-	-	-	-	-	-	-	-			
F13	at MUR*	-	-	-	-	-	-	-	-	-	-	-	-			
F18	MOR*	-	-	-	-	-	-	-	-	-	-	-	-			
F20	ECU*	-	-	-	-	-	-	-	-	-	-	-	-			
F25	at SIUE*	-	-	-	-	-	-	-	-	-	-	-	-			
F27	at EIU*	-	-	-	-	-	-	-	-	-	-	-	-			
M3	OVC	-	-	-	-	-	-	-	-	-	-	-	-			
M4	OVC	-	-	-	-	-	-	-	-	-	-	-	-			
M5	OVC	-	-	-	-	-	-	-	-	-	-	-	-			
M6	OVC	-	-	-	-	-	-	-	-	-	-	-	-			

GRANT CAREER STATISTICS																
Year	GP	GS	Min	Avg	FG	FGA	Pct	3-Point	F-Throw	Rebounds	PF	AST	TO	BLK	STL	Scoring
2018-19	26	0	222	8.5	27	50	.540	10	22	4.55	11	14	7.86	8	8	16
2019-20	29	24	844	29.1	57	152	.375	24	80	.300	36	46	.783	16	47	63
2020-21	1	0	3	3.0	0	1	.000	0	1	.000	2	2	1.000	0	0	0.0
TOTAL	56	24	1069	19.1	84	203	.414	34	103	.330	49	62	.790	24	55	79

PLAYER SUMMARIES



35

PAIGE PIPKIN

R-Jr. | G | 5-10 | Henderson, Tenn. | Chester County HS

SEASON HIGHS		CAREER HIGHS	
Points	2 at Southeast Missouri (12/18/20)	Points	4, 2x, last at IUPUI (11/13/18)
FG Made	1 at Southeast Missouri (12/18/20)	FG Made	2, 2x, last at IUPUI (11/13/18)
FG Att.	4 at Southeast Missouri (12/18/20)	FG Att.	8 vs. Southern Illinois (11/9/18)
3PG Made	N/A	3PG Made	N/A
3FG Att.	1 at Southeast Missouri (12/18/20)	3FG Att.	3 vs. Southern Illinois (11/9/18)
FT Made	N/A	FT Made	N/A
FT Att.	N/A	FT Att.	N/A
Rebounds	1 at Southeast Missouri (12/18/20)	Rebounds	3 vs. Southern Illinois (11/9/18)
Assists	2 at Southeast Missouri (12/18/20)	Assists	4 at IUPUI (11/13/18)
Steals	1 at Southeast Missouri (12/18/20)	Steals	1, 2x, last at Southeast Missouri (12/18/20)
Blocks	N/A	Blocks	N/A
Minutes	18 at Southeast Missouri (12/18/20)	Minutes	19 vs. Southern Illinois (11/9/18)

MISCELLANEOUS CAREER STATISTICS			
Games Played	4	Double-Doubles	0
Games Started	3	10+ Points	0
Led Team In Scoring	0	20+ Points	0
Led Team In Rebounding	0	5+ Rebounds	0
Led Team In Assists	0	10+ Rebounds	0
Led Team In Steals	1	5+ Assists	0
Led Team In Blocks	0	3+ Steals	0

PIPKIN GAME-BY-GAME STATISTICS													
Date	Opp	GS	Min	FG	3FG	FT	O-D-R	PF	A	TO	S	B	PTS
D6	at LOU	-	-	-	-	DNP	-	-	-	-	-	-	-
D8	at SAM	-	-	-	-	DNP	-	-	-	-	-	-	-
D18	at SEMO*	18	1-4	0-1	0-0	1-0-1	1	2	0	1	0	2	
D30	at JSU*	-	-	-	-	-	-	-	-	-	-	-	-
J2	BEL*	-	-	-	-	-	-	-	-	-	-	-	-
J7	at TSU*	-	-	-	-	-	-	-	-	-	-	-	-
J9	at BEL*	-	-	-	-	-	-	-	-	-	-	-	-
J14	AP*	-	-	-	-	-	-	-	-	-	-	-	-
J16	MUR*	-	-	-	-	-	-	-	-	-	-	-	-
J21	at ECU*	-	-	-	-	-	-	-	-	-	-	-	-
J23	at MOR*	-	-	-	-	-	-	-	-	-	-	-	-
J28	EIU*	-	-	-	-	-	-	-	-	-	-	-	-
J30	SIUE*	-	-	-	-	-	-	-	-	-	-	-	-
F1	SEMO*	-	-	-	-	-	-	-	-	-	-	-	-
F4	JSU*	-	-	-	-	-	-	-	-	-	-	-	-
F6	TTU*	-	-	-	-	-	-	-	-	-	-	-	-
F11	at AP*	-	-	-	-	-	-	-	-	-	-	-	-
F13	at MUR*	-	-	-	-	-	-	-	-	-	-	-	-
F18	MOR*	-	-	-	-	-	-	-	-	-	-	-	-
F20	ECU*	-	-	-	-	-	-	-	-	-	-	-	-
F25	at SIUE*	-	-	-	-	-	-	-	-	-	-	-	-
F27	at EIU*	-	-	-	-	-	-	-	-	-	-	-	-
M3	OVC	-	-	-	-	-	-	-	-	-	-	-	-
M4	OVC	-	-	-	-	-	-	-	-	-	-	-	-
M5	OVC	-	-	-	-	-	-	-	-	-	-	-	-
M6	OVC	-	-	-	-	-	-	-	-	-	-	-	-
		-	-	-	-	-	-	-	-	-	-	-	-
		-	-	-	-	-	-	-	-	-	-	-	-

PIPKIN CAREER STATISTICS													
Year	GP	GS	Min	Avg	Total	FG	FGA	Pct	3-Point	F-Throw	Rebounds	PF	Scoring
2017-18	-	-	-	-	-	-	-	-	-	Redshirted	-	-	-
2018-19	3	3	55	18.3	4	16	.250	0	7	.000	0	2	8
2019-20	-	-	-	-	-	-	-	-	-	Injured	-	-	-
2020-21	1	0	18	18.0	1	4	.250	0	1	.000	0	2	2
TOTAL	4	3	73	18.3	5	20	.250	0	8	.000	0	4	10



44

HALEY NICHOLS

Fr. | F | 6-0 | Avon, Ind. | Avon HS

SEASON HIGHS		CAREER HIGHS	
Points	N/A	Points	N/A
FG Made	N/A	FG Made	N/A
FG Att.	N/A	FG Att.	N/A
3PG Made	N/A	3PG Made	N/A
3FG Att.	N/A	3FG Att.	N/A
FT Made	N/A	FT Made	N/A
FT Att.	N/A	FT Att.	N/A
Rebounds	N/A	Rebounds	N/A
Assists	N/A	Assists	N/A
Steals	N/A	Steals	N/A
Blocks	N/A	Blocks	N/A
Minutes	N/A	Minutes	N/A

MISCELLANEOUS CAREER STATISTICS			
Games Played	0	Double-Doubles	0
Games Started	0	10+ Points	0
Led Team In Scoring	0	20+ Points	0
Led Team In Rebounding	0	5+ Rebounds	0
Led Team In Assists	0	10+ Rebounds	0
Led Team In Steals	0	5+ Assists	0
Led Team In Blocks	0	3+ Steals	0

NICHOLS GAME-BY-GAME STATISTICS													
Date	Opp	GS	Min	FG	3FG	FT	O-D-R	PF	A	TO	S	B	PTS
D6	at LOU	-	-	-	-	DNP	-	-	-	-	-	-	-
D8	at SAM	-	-	-	-	DNP	-	-	-	-	-	-	-
D18	at SEMO*	-	-	-	-	DNP	-	-	-	-	-	-	-
D30	at JSU*	-	-	-	-	-	-	-	-	-	-	-	-
J2	BEL*	-	-	-	-	-	-	-	-	-	-	-	-
J7	at TSU*	-	-	-	-	-	-	-	-	-	-	-	-
J9	at BEL*	-	-	-	-	-	-	-	-	-	-	-	-
J14	AP*	-	-	-	-	-	-	-	-	-	-	-	-
J16	MUR*	-	-	-	-	-	-	-	-	-	-	-	-
J21	at ECU*	-	-	-	-	-	-	-	-	-	-	-	-
J23	at MOR*	-	-	-	-	-	-	-	-	-	-	-	-
J28	EIU*	-	-	-	-	-	-	-	-	-	-	-	-
J30	SIUE*	-	-	-	-	-	-	-	-	-	-	-	-
F1	SEMO*	-	-	-	-	-	-	-	-	-	-	-	-
F4	JSU*	-	-	-	-	-	-	-	-	-	-	-	-
F6	TTU*	-	-	-	-	-	-	-	-	-	-	-	-
F11	at AP*	-	-	-	-	-	-	-	-	-	-	-	-
F13	at MUR*	-	-	-	-	-	-	-	-	-	-	-	-
F18	MOR*	-	-	-	-	-	-	-	-	-	-	-	-
F20	ECU*	-	-	-	-	-	-	-	-	-	-	-	-
F25	at SIUE*	-	-	-	-	-	-	-	-	-	-	-	-
F27	at EIU*	-	-	-	-	-	-	-	-	-	-	-	-
M3	OVC	-	-	-	-	-	-	-	-	-	-	-	-
M4	OVC	-	-	-	-	-	-	-	-	-	-	-	-
M5	OVC	-	-	-	-	-	-	-	-	-	-	-	-
M6	OVC	-	-	-	-	-	-	-	-	-	-	-	-
		-	-	-	-	-	-	-	-	-	-	-	-
		-	-	-	-	-	-	-	-	-	-	-	-

NICHOLS CAREER STATISTICS													
Year	GP	GS	Min	Avg	Total	FG	FGA	Pct	3-Point	F-Throw	Rebounds	PF	Scoring
2020-21	-	-	-	-	-	-	-	-	-	-	-	-	-
TOTAL	-	-	-	-	-	-	-	-	-	-	-	-	-

TEAM GAME HIGHS AND LOWS

	UT MARTIN		OPPONENT	
	HIGH	LOW	HIGH	LOW
• Points	75 at Samford (12/8)	61 at Southeast Missouri (12/18)	85 at #5 Louisville (12/6)	58 at Southeast Missouri (12/18)
• First Quarter Points	16 at Samford (12/8)	11 at Southeast Missouri (12/18)	20 at Samford (12/8)	8 at Southeast Missouri (12/18)
• Second Quarter Points	21 at Samford (12/8)	13 at #5 Louisville (12/6)	25 at #5 Louisville (12/6)	8 at Southeast Missouri (12/18)
• First-Half Points	37 at Samford (12/8)	27 at #5 Louisville (12/6)	42 at Samford (12/8)	16 at Southeast Missouri (12/18)
• Third Quarter Points	26 at Samford (12/8)	15 at Southeast Missouri (12/18)	25 at Southeast Missouri (12/18)	13 at Samford (12/8)
• Fourth Quarter Points	19 at #5 Louisville (12/6)	12 at Samford (12/8)	21 at #5 Louisville (12/6)	12 at Samford (12/8)
• Second-Half Points	40 at #5 Louisville (12/6)	33 at Southeast Missouri (12/18)	45 at #5 Louisville (12/6)	25 at Samford (12/8)
• Field Goals Made	31 at Samford (12/8)	21 at #5 Louisville (12/6)	29 at #5 Louisville (12/6)	21 at Southeast Missouri (12/18)
• Field Goal Att.	55 at Samford (12/8)	51 at #5 Louisville (12/6)	69 at #5 Louisville (12/6)	58 at Samford (12/8)
• Field Goal %	56.4 at Samford (12/8)	40.7 at Southeast Missouri (12/18)	44.8 at Samford (12/8)	32.8 at Southeast Missouri (12/18)
• 3-PT Field Goals Made	7, 2x, last at Samford (12/8)	3 at Southeast Missouri (12/18)	8 at Samford (12/8)	4 at Southeast Missouri (12/18)
• 3-PT Field Goal Att.	20 at #5 Louisville (12/6)	10 at Southeast Missouri (12/18)	23 at #5 Louisville (12/6)	15 at Southeast Missouri (12/18)
• 3-PT Field Goal %	43.8 at Samford (12/8)	30.0 at Southeast Missouri (12/18)	36.4 at Samford (12/8)	26.7 at Southeast Missouri (12/18)
• FT Made	18 at #5 Louisville (12/6)	6 at Samford (12/8)	20 at #5 Louisville (12/6)	7 at Samford (12/8)
• FT Attempts	25 at #5 Louisville (12/6)	11 at Samford (12/8)	29 at #5 Louisville (12/6)	11 at Samford (12/8)
• FT Percentage	77.8 at Southeast Missouri (12/18)	54.5 at Samford (12/8)	80.0 at Southeast Missouri (12/18)	63.6 at Samford (12/8)
• Offensive Rebounds	12 at Southeast Missouri (12/18)	3 at #5 Louisville (12/6)	19 at Southeast Missouri (12/18)	12, 2x, last at Samford (12/8)
• Defensive Rebounds	32 at #5 Louisville (12/6)	23 at Samford (12/8)	31 at #5 Louisville (12/6)	17 at Samford (12/8)
• Total Rebounds	37 at Southeast Missouri (12/18)	33 at Samford (12/8)	43 at #5 Louisville (12/6)	29 at Samford (12/8)
• Assists	21 at Samford (12/8)	11 at #5 Louisville (12/6)	13, 2x, at Southeast Missouri (12/18)	12 at #5 Louisville (12/6)
• Steals	8 at Samford (12/8)	3 at #5 Louisville (12/6)	9 at #5 Louisville (12/6)	6 at Samford (12/8)
• Blocked Shots	4 at Samford (12/8)	2 at #5 Louisville (12/6)	5 at Southeast Missouri (12/18)	1, 2x, last at Samford (12/8)
• Turnovers	19, 2x, last at Samford (12/8)	14 at Southeast Missouri (12/18)	17 at Samford (12/8)	9 at #5 Louisville (12/6)
• Fouls	22 at #5 Louisville (12/6)	14 at Samford (12/8)	26 at #5 Louisville (12/6)	9 at Samford (12/8)

INDIVIDUAL GAME HIGHS

	UT MARTIN	OPPONENT
• Points	31, Chelsey Perry at Samford (12/8)	26, Dana Evans at #5 Louisville (12/6)
• Field Goals Made	14, Chelsey Perry at Samford (12/8)	9, Dana Evans at #5 Louisville (12/6)
• Field Goals Attempted	22, Chelsey Perry at Samford (12/8)	18, Dana Evans at #5 Louisville (12/6)
• 3-Point FGs Made	4, Seygan Robins at Samford (12/8)	4, Dana Evans at #5 Louisville (12/6)
• 3-Point FGs Att.	7, Chelsey Perry at #5 Louisville (12/6)	9, 2x, last by Taelour Pruitt at Southeast Missouri (12/18)
• Free Throws Made	8, Chelsey Perry at Southeast Missouri (12/18)	6, 2x, last by Annie Ramil at Samford (12/8)
• Free Throws Att.	10, Chelsey Perry at Southeast Missouri (12/18)	8, Annie Ramil at Samford (12/8)
• Offensive Rebounds	5, Dasia Young at Southeast Missouri (12/18)	6, 2x, last by Tesia Thompson at Southeast Missouri (12/18)
• Defensive Rebounds	8, Chelsey Perry at Samford (12/8)	7, Annie Ramil at Samford (12/8)
• Total Rebounds	11, Chelsey Perry at Samford (12/8)	13, Annie Ramil at Samford (12/8)
• Assists	6, Seygan Robins at Samford (12/8)	5, Taelour Pruitt at Southeast Missouri (12/18)
• Steals	3, Chelsey Perry at Samford (12/8)	3, Balogun/Van Lith at #5 Louisville (12/6)
• Blocked Shots	2, 2x, last by Chelsey Perry at Samford (12/8)	3, Kennedi Allen at Southeast Missouri (12/18)
• Turnovers	6, Seygan Robins at Samford (12/8)	5, 2x, last by Taelour Pruitt at Southeast Missouri (12/18)
• Minutes Played	40, Chelsey Perry at Samford (12/8)	36, Raven Omar at Samford (12/8)

MISCELLANEOUS STATS

Double-Figure Scoring Games

Player	17-18	18-19	19-20	20-21	Career
Chelsey Perry	20	19	30	3	72
Maddie Waldrop	5	10	19	-	34
Damiah Griffin	-	12	8	-	20
Zaire Hicks	3	14	1	-	18
Dasia Young	-	-	8	1	9
Kyannah Grant	-	2	5	-	7
Sade' Hudson	-	2	3	-	5
Demi Burdick	0	2	2	-	4
Emma Davis	-	2	0	-	2
Hayley Harrison	-	-	-	1	1
Seygan Robins	-	-	-	1	1

20-Point Scoring Games

Player	17-18	18-19	19-20	20-21	Career
Chelsey Perry	4	4	20	3	31
Maddie Waldrop	0	3	4	-	7
Damiah Griffin	-	0	1	-	1

30-Point Scoring Games

Player	17-18	18-19	19-20	20-21	Career
Chelsey Perry	0	0	9	1	10

Double-Figure Rebounding Games

Player	17-18	18-19	19-20	20-21	Career
Maddie Waldrop	3	7	8	-	18
Chelsey Perry	3	3	7	1	14
Damiah Griffin	-	0	1	-	1

Double-Doubles

Player	17-18	18-19	19-20	20-21	Career
Maddie Waldrop	1	3	7	-	11
Chelsey Perry	1	3	6	1	11
Damiah Griffin	-	0	1	-	1

5+ Assist Games

Player	17-18	18-19	19-20	20-21	Career
Kyannah Grant	-	0	8	-	8
Maddie Waldrop	0	1	6	1	8
Zaire Hicks	0	4	0	-	4
Chelsey Perry	0	0	2	-	2
Dasia Young	-	-	2	-	2
Demi Burdick	0	0	1	-	1
Seygan Robins	-	-	-	1	1

3+ Steal Games

Player	17-18	18-19	19-20	20-21	Career
Chelsey Perry	4	3	8	1	16
Zaire Hicks	2	6	1	-	9
Damiah Griffin	-	3	3	-	6
Kyannah Grant	-	1	5	-	6
Sade' Hudson	-	4	2	-	6
Maddie Waldrop	0	1	2	-	3
Demi Burdick	0	0	1	-	1

3+ Block Games

Player	17-18	18-19	19-20	20-21	Career
Chelsey Perry	5	12	16	-	23
Maddie Waldrop	1	1	2	-	4
Demi Burdick	0	1	0	-	1

GAME-BY-GAME STARTERS

Date	Opponent	G	G/F	G/F	F	F	Record
Dec. 6	at #5 Louisville	Robins	Harrison	Young	Perry	Waldrop	0-1
Dec. 8	at Samford	Robins	Harrison	Young	Perry	Waldrop	1-1
Dec. 18	at Southeast Missouri*	Robins	Harrison	Young	Perry	Waldrop	2-1, 1-0
Dec. 30	at Jacksonville State*	-	-	-	-	-	-
Jan. 2	BELMONT*	-	-	-	-	-	-
Jan. 7	at Tennessee State*	-	-	-	-	-	-
Jan. 9	at Belmont*	-	-	-	-	-	-
Jan. 14	AUSTIN PEAY*	-	-	-	-	-	-
Jan. 16	MURRAY STATE*	-	-	-	-	-	-
Jan. 21	at Eastern Kentucky*	-	-	-	-	-	-
Jan. 23	at Morehead State*	-	-	-	-	-	-
Jan. 28	EASTERN ILLINOIS*	-	-	-	-	-	-
Jan. 30	SIUE*	-	-	-	-	-	-
Feb. 1	SOUTHEAST MISSOURI*	-	-	-	-	-	-
Feb. 4	JACKSONVILLE STATE*	-	-	-	-	-	-
Feb. 6	TENNESSEE TECH*	-	-	-	-	-	-
Feb. 11	at Austin Peay*	-	-	-	-	-	-
Feb. 13	at Murray State*	-	-	-	-	-	-
Feb. 18	MOREHEAD STATE*	-	-	-	-	-	-
Feb. 20	EASTERN KENTUCKY*	-	-	-	-	-	-
Feb. 25	at SIUE*	-	-	-	-	-	-
Feb. 27	at Eastern Illinois*	-	-	-	-	-	-

GAME-BY-GAME LEADERS

Date	Opponent	Points	Rebounds	Assists	Steals	Blocks
Dec. 6	at #5 Louisville	Perry (26)	Waldrop (8)	Robins (4)	3 Tied	Perry (2)
Dec. 8	at Samford	Perry (31)	Perry (11)	Robins (6)	Perry (3)	Perry (2)
Dec. 18	at Southeast Missouri*	Perry (28)	Young (9)	Robins (4)	6 Tied (1)	Young (1)
Dec. 30	at Jacksonville State*	-	-	-	-	-
Jan. 2	BELMONT*	-	-	-	-	-
Jan. 7	at Tennessee State*	-	-	-	-	-
Jan. 9	at Belmont*	-	-	-	-	-
Jan. 14	AUSTIN PEAY*	-	-	-	-	-
Jan. 16	MURRAY STATE*	-	-	-	-	-
Jan. 21	at Eastern Kentucky*	-	-	-	-	-
Jan. 23	at Morehead State*	-	-	-	-	-
Jan. 28	EASTERN ILLINOIS*	-	-	-	-	-
Jan. 30	SIUE*	-	-	-	-	-
Feb. 1	SOUTHEAST MISSOURI*	-	-	-	-	-
Feb. 4	JACKSONVILLE STATE*	-	-	-	-	-
Feb. 6	TENNESSEE TECH*	-	-	-	-	-
Feb. 11	at Austin Peay*	-	-	-	-	-
Feb. 13	at Murray State*	-	-	-	-	-
Feb. 18	MOREHEAD STATE*	-	-	-	-	-
Feb. 20	EASTERN KENTUCKY*	-	-	-	-	-
Feb. 25	at SIUE*	-	-	-	-	-
Feb. 27	at Eastern Illinois*	-	-	-	-	-

LEADS AND DEFICITS

Date	Opponent	Largest Lead	Largest Deficit	Scoring Margin	Time Led	Time Trailed	Ties/Lead Changes	Result
Dec. 6	at #5 Louisville	3	21	-18	4:37	32:39	10/2	L, 85-67
Dec. 8	at Samford	13	9	+8	22:17	16:23	2/1	W, 75-67
Dec. 18	at Southeast Missouri*	12	0	+3	37:37	0:00	1/0	W, 61-58
Dec. 30	at Jacksonville State*	-	-	-	-	-	-	-
Jan. 2	BELMONT*	-	-	-	-	-	-	-
Jan. 7	at Tennessee State*	-	-	-	-	-	-	-
Jan. 9	at Belmont*	-	-	-	-	-	-	-
Jan. 14	AUSTIN PEAY*	-	-	-	-	-	-	-
Jan. 16	MURRAY STATE*	-	-	-	-	-	-	-
Jan. 21	at Eastern Kentucky*	-	-	-	-	-	-	-
Jan. 23	at Morehead State*	-	-	-	-	-	-	-
Jan. 28	EASTERN ILLINOIS*	-	-	-	-	-	-	-
Jan. 30	SIUE*	-	-	-	-	-	-	-
Feb. 1	SOUTHEAST MISSOURI*	-	-	-	-	-	-	-
Feb. 4	JACKSONVILLE STATE*	-	-	-	-	-	-	-
Feb. 6	TENNESSEE TECH*	-	-	-	-	-	-	-
Feb. 11	at Austin Peay*	-	-	-	-	-	-	-
Feb. 13	at Murray State*	-	-	-	-	-	-	-
Feb. 18	MOREHEAD STATE*	-	-	-	-	-	-	-
Feb. 20	EASTERN KENTUCKY*	-	-	-	-	-	-	-
Feb. 25	at SIUE*	-	-	-	-	-	-	-
Feb. 27	at Eastern Illinois*	-	-	-	-	-	-	-

TEAM GAME-BY-GAME

Opponent	Date	Score	W/L	Total			3-Pointers			Free Throws			Rebounds				PF	A	TO	Blk	Stl	Pts	Avg
				FG	FGA	Pct	3FG	FGA	Pct	FT	FTA	Pct	Off	Def	Tot	Avg							
at #5 Louisville	12/06/20	67-85	L	21	51	.412	7	20	.350	18	25	.720	3	32	35	35.0	22	11	19	2	3	67	67.0
at Samford	12/08/20	75-67	W	31	55	.564	7	16	.438	6	11	.545	10	23	33	34.0	14	21	19	4	8	75	71.0
at Southeast Missouri	12/18/20	61-58	W	22	54	.407	3	10	.300	14	18	.778	12	25	37	35.0	15	15	14	1	6	61	67.7
UT Martin		203		74	160	.463	17	46	.370	38	54	.704	25	80	105	35.0	51	47	52	7	17	203	67.7
Opponents		210		76	191	.398	19	60	.317	39	55	.709	43	69	112	37.3	51	38	39	7	22	210	70.0



SPECIALTY TEAM STATS

Date	Opponent	Result	POINTS IN THE PAINT			POINTS OFF TURNOVERS			2ND CHANCE POINTS			FAST BREAK POINTS			BENCH POINTS		
			UTM	OPP.	DIFF.	UTM	OPP.	DIFF.	UTM	OPP.	DIFF.	UTM	OPP.	DIFF.	UTM	OPP.	DIFF.
Dec. 6	at #5 Louisville	L, 85-67	24	40	-16	8	13	-5	2	12	-10	0	13	-13	5	36	-31
Dec. 8	at Samford	W, 75-67	38	24	+14	19	19	0	8	8	0	11	4	+7	15	30	-15
Dec. 18	at Southeast Missouri*	W, 61-58	26	28	-2	6	13	-7	8	15	-7	2	2	0	12	11	+1
Dec. 30	at Jacksonville State*	-	-	-	-	-	-	-	-	-	-	-	-	-	-	-	-
Jan. 2	BELMONT*	-	-	-	-	-	-	-	-	-	-	-	-	-	-	-	-
Jan. 7	at Tennessee State*	-	-	-	-	-	-	-	-	-	-	-	-	-	-	-	-
Jan. 9	at Belmont*	-	-	-	-	-	-	-	-	-	-	-	-	-	-	-	-
Jan. 14	AUSTIN PEAY*	-	-	-	-	-	-	-	-	-	-	-	-	-	-	-	-
Jan. 16	MURRAY STATE*	-	-	-	-	-	-	-	-	-	-	-	-	-	-	-	-
Jan. 21	at Eastern Kentucky*	-	-	-	-	-	-	-	-	-	-	-	-	-	-	-	-
Jan. 23	at Morehead State*	-	-	-	-	-	-	-	-	-	-	-	-	-	-	-	-
Jan. 28	EASTERN ILLINOIS*	-	-	-	-	-	-	-	-	-	-	-	-	-	-	-	-
Jan. 30	SIUE*	-	-	-	-	-	-	-	-	-	-	-	-	-	-	-	-
Feb. 1	SOUTHEAST MISSOURI*	-	-	-	-	-	-	-	-	-	-	-	-	-	-	-	-
Feb. 4	JACKSONVILLE STATE*	-	-	-	-	-	-	-	-	-	-	-	-	-	-	-	-
Feb. 6	TENNESSEE TECH*	-	-	-	-	-	-	-	-	-	-	-	-	-	-	-	-
Feb. 11	at Austin Peay*	-	-	-	-	-	-	-	-	-	-	-	-	-	-	-	-
Feb. 13	at Murray State*	-	-	-	-	-	-	-	-	-	-	-	-	-	-	-	-
Feb. 18	MOREHEAD STATE*	-	-	-	-	-	-	-	-	-	-	-	-	-	-	-	-
Feb. 20	EASTERN KENTUCKY*	-	-	-	-	-	-	-	-	-	-	-	-	-	-	-	-
Feb. 25	at SIUE*	-	-	-	-	-	-	-	-	-	-	-	-	-	-	-	-
Feb. 27	at Eastern Illinois*	-	-	-	-	-	-	-	-	-	-	-	-	-	-	-	-



UT Martin at #5 Louisville
12/6/20 | 11 am at KFC Yum! Center - Louisville, Ky.

UT Martin 67 • 0-1												
##	Player	GS	MIN	FG	3PT	FT	O-B-T	PF	A	T	B	SPTS
20	Chelsey Perry	*	29	8-19	3-7	7-8	0-4-4	4	2	1	2	1 26
11	Dasia Young	*	36	4-7	2-3	2-4	0-5-5	4	2	0	0	12
23	Hayley Harrison	*	18	2-4	2-2	4-6	1-1-2	2	0	2	0	1 10
21	Maddie Waldrop	*	33	3-6	0-3	2-3	2-6-8	3	1	2	0	8
05	Seygan Robins	*	25	2-6	0-2	2-2	0-1-1	4	4	5	0	6
10	Raegan Johnson	*	6	2-2	0-0	0-0	0-3-3	3	0	1	0	4
02	Sade' Hudson	*	24	0-5	0-1	1-2	0-3-3	1	1	4	0	1 1
13	Demi Burdick	*	12	0-1	0-1	0-0	0-2-2	1	0	1	0	0
22	Damiaha Griffin	*	12	0-0	0-0	0-0	0-2-2	0	1	2	0	0
03	Macy Rippy	*	5	0-1	0-1	0-0	0-0-0	0	0	1	0	0
TM TEAM			0	0-0	0-0	0-0	0-5-5	0	0	0	0	0
TOTALS		-	200	21-51	7-20	18-25	3-32-35	22	11	19	2	3 67

#5 Louisville • 4-0												
##	Player	GS	MIN	FG	3PT	FT	O-B-T	PF	A	T	B	SPTS
01	Dana Evans	*	27	9-18	4-9	4-5	0-1-1	2	1	1	0	2 26
10	Hailey Van Lith	*	29	2-9	0-2	6-7	1-6-7	2	3	1	0	3 10
14	Kianna Smith	*	18	4-9	2-4	0-0	0-1-1	4	0	0	0	10
11	Norika Konno	*	18	3-6	1-2	2-2	0-3-3	0	0	1	0	9
44	Olivia Cochran	*	19	2-5	0-0	3-6	4-6-10	2	0	2	0	7
22	Elizabeth Dixon	*	15	3-5	0-0	1-2	1-6-7	2	1	0	1	7
13	Merissah Russell	*	11	3-3	0-0	0-0	0-2-2	4	1	2	0	6
04	Elizabeth Balogun	*	19	2-5	0-2	1-2	0-1-1	4	1	1	0	3 5
00	Ramani Parker	*	5	1-2	0-0	2-3	2-0-2	1	0	0	0	4
02	Ahlana Smith	*	13	0-2	0-2	1-2	0-0-0	1	2	0	0	1 1
05	Mykasa Robinson	*	13	0-1	0-0	0-0	2-3-5	2	3	1	0	0
31	Nyah Green	*	13	0-4	0-2	0-0	1-1-2	2	0	0	0	0
TM TEAM			0	0-0	0-0	0-0	1-1-2	0	0	0	0	0
TOTALS		-	200	29-69	7-23	20-29	12-31-43	26	12	9	1	9 85

Score by Periods	1st	2nd	3rd	4th	Total
UT Martin	14	13	21	19	67
#5 Louisville	15	25	24	21	85



UT Martin at Samford
12/8/20 | 6 pm at Pete Hanna Center - Birmingham, Ala.

UT Martin 75 • 1-1												
##	Player	GS	MIN	FG	3PT	FT	O-B-T	PF	A	T	B	SPTS
20	Chelsey Perry	*	40	14-22	3-5	0-0	3-8-11	2	1	2	2	3 31
05	Seygan Robins	*	38	6-9	4-6	0-0	1-1-2	2	6	6	0	2 16
11	Dasia Young	*	32	2-6	0-3	1-3	1-4-5	3	3	3	1	0 5
23	Hayley Harrison	*	26	1-4	0-1	2-2	0-1-1	3	1	3	0	0 4
21	Maddie Waldrop	*	25	2-5	0-0	0-2	1-5-6	4	5	1	1	2 4
22	Damiaha Griffin	*	6	4-4	0-0	0-0	0-0-0	0	0	1	0	0 8
13	Demi Burdick	*	18	2-3	0-0	0-0	3-2-5	0	2	1	0	0 4
02	Sade' Hudson	*	15	0-2	0-1	3-4	0-0-0	0	3	1	0	1 3
TM TEAM			0	0-0	0-0	0-0	1-2-3	0	0	1	0	0 0
TOTALS		-	200	31-55	7-16	6-11	10-23-33	14	21	19	4	8 75

Samford • 0-4												
##	Player	GS	MIN	FG	3PT	FT	O-B-T	PF	A	T	B	SPTS
14	Annie Ramil	*	30	4-10	0-3	5-8	6-7-13	3	2	5	1	1 13
22	Raven Omar	*	36	5-8	2-2	0-0	1-2-3	0	3	3	0	0 12
03	Shauntai Battle	*	24	2-5	2-4	2-2	0-0-0	0	1	1	0	0 8
33	Makaila Woolard	*	34	2-7	0-1	0-0	2-4-6	2	1	1	0	0 4
04	Audra Leibold	*	6	0-3	0-2	0-0	0-0-0	0	0	0	0	0 0
11	Andrea Cournoyer	*	28	8-17	2-7	0-1	1-2-3	2	3	1	0	1 18
12	Mallory Hampton	*	24	4-5	2-3	0-0	0-0-0	0	3	3	0	2 10
32	Kiertan Nelson	*	14	1-3	0-0	0-0	0-0-0	1	0	1	0	1 2
21	Katie Allen	*	4	0-0	0-0	0-0	0-0-0	1	0	1	0	1 0
TM TEAM			0	0-0	0-0	0-0	2-2-4	0	0	1	0	0 0
TOTALS		-	200	26-58	8-22	7-11	12-17-29	9	13	17	1	6 67

Score by Periods	1st	2nd	3rd	4th	Total
UT Martin	16	21	26	12	75
Samford	20	22	13	12	67



UT Martin at Samford
12/8/20 | 6 pm at Pete Hanna Center - Birmingham, Ala.

UT Martin 61 • 2-1 (1-1 OVC)												
##	Player	GS	MIN	FG	3PT	FT	O-B-T	PF	A	T	B	SPTS
20	Chelsey Perry	*	39	9-17	2-4	8-10	1-6-7	4	3	4	0	1 28
05	Seygan Robins	*	39	2-6	0-3	2-2	0-1-1	2	4	3	0	1 6
21	Maddie Waldrop	*	27	2-8	0-0	2-4	0-7-7	2	1	2	0	1 6
23	Hayley Harrison	*	19	2-2	1-1	0-0	0-3-3	1	1	4	0	1 5
11	Dasia Young	*	33	2-8	0-0	0-0	5-4-9	2	3	0	1	0 4
13	Demi Burdick	*	8	2-5	0-0	0-0	0-1-1	1	0	0	0	0 4
35	Paige Pipkin	*	18	1-4	0-1	0-0	1-0-1	1	2	0	0	1 2
22	Damiaha Griffin	*	9	1-2	0-0	0-0	0-1-1	1	0	0	0	0 2
14	Zaire Hicks	*	5	1-1	0-0	0-0	0-0-0	1	0	0	0	1 2
31	Kyannah Grant	*	3	0-1	0-1	2-2	0-0-0	0	1	1	0	0 2
02	Sade' Hudson	*	0+	0-0	0-0	0-0	0-0-0	0	0	0	0	0 0
03	Macy Rippy	*	0+	0-0	0-0	0-0	0-0-0	0	0	0	0	0 0
TM TEAM			0	0-0	0-0	0-0	5-2-7	0	0	0	0	0 0
TOTALS		-	200	22-54	3-10	14-18	12-25-37	15	15	14	1	6 61

Southeast Missouri 58 • 2-4 (0-1 OVC)												
##	Player	GS	MIN	FG	3PT	FT	O-B-T	PF	A	T	B	SPTS
24	Tesia Thompson	*	31	7-16	0-1	4-4	6-2-8	3	3	4	0	2 18
10	Taelour Pruitt	*	33	4-13	2-9	3-4	0-4-4	3	5	5	0	2 13
40	Latrese Saine	*	27	5-11	0-0	0-0	3-4-7	2	2	2	1	0 10
14	Nyrobi Pillers	*	19	2-7	0-0	2-2	1-2-3	4	0	0	0	0 6
34	Sophie Bussard	*	13	0-2	0-1	0-0	0-0-0	0	2	0	0	0 0
02	Roshala Scott	*	23	2-5	2-2	2-3	2-3-5	1	0	2	0	2 8
01	Kennedi Allen	*	21	1-5	0-0	0-0	1-4-5	1	1	0	3	0 2
30	Terri Smith	*	23	0-3	0-2	1-2	0-0-0	2	0	0	1	0 1
13	Deanay Watson	*	10	0-2	0-0	0-0	1-1-2	0	0	0	0	1 0
TM TEAM			0	0-0	0-0	0-0	5-1-6	0	0	0	0	0 0
TOTALS		-	200	21-64	4-15	12-15	19-21-40	16	13	13	5	7 58

Score by Periods	1st	2nd	3rd	4th	Total
UT Martin	11	17	15	18	61
Southeast Missouri	8	8	25	17	58

SEASON/CAREER STATISTICS

SUMMARY	Overall Statistics										Career Statistics									
	GP-GS	Min/G	FG%	3PT%	FT%	R/G	A/G	STL	BLK	PTS/G	GP-GS	Min/G	FG%	3PT%	FT%	R/G	A/G	STL	BLK	PTS/G
Chelsey Perry	3-3	36.0	.534	.500	.833	7.3	2.0	5	4	28.3	101-99	28.6	.469	.368	.842	6.4	1.5	137	199	15.7
Seygan Robins	3-3	34.0	.476	.364	1.000	1.3	4.7	3	0	9.3	3-3	34.0	.476	.364	1.000	1.3	4.7	3	0	9.3
Dasia Young	3-3	33.7	.381	.333	.429	6.3	2.7	0	2	7.0	34-23	24.1	.416	.348	.606	3.3	1.6	21	8	6.3
Hayley Harrison	3-3	21.0	.500	.750	.750	2.0	0.7	2	0	6.3	3-3	21.0	.500	.750	.750	2.0	0.7	2	0	6.3
Maddie Waldrop	3-3	28.3	.368	.000	.444	7.0	2.3	3	1	6.0	98-65	26.3	.450	.300	.730	6.8	1.7	81	64	8.6
Raegan Johnson	1-0	6.0	1.000	.000	.000	3.0	0.0	0	0	4.0	21-0	4.0	.429	.000	.500	1.2	0.1	3	0	1.0
Damiah Griffin	3-0	9.0	.833	.000	.000	1.0	0.3	0	0	3.3	47-22	18.9	.452	.295	.774	3.9	0.7	57	15	8.8
Demi Burdick	3-0	12.7	.444	.000	.000	2.7	0.7	0	0	2.7	79-17	9.9	.448	.212	.609	2.3	0.6	28	31	2.9
Kyannah Grant	1-0	3.0	.000	.000	1.000	0.0	1.0	0	0	2.0	56-24	19.1	.414	.330	.790	1.4	2.4	58	8	4.5
Zaire Hicks	1-0	5.0	1.000	.000	.000	0.0	0.0	1	0	2.0	67-34	18.3	.349	.313	.701	1.8	1.6	73	3	5.8
Paige Pipkin	1-0	18.0	.250	.000	.000	1.0	2.0	1	0	2.0	4-3	18.3	.250	.000	.000	1.0	2.5	2	0	2.5
Sade' Hudson	3-0	13.0	.000	.000	.667	1.0	1.3	2	0	1.3	45-1	12.2	.320	.158	.590	1.5	1.2	39	2	3.9
Macy Rippy	2-0	2.5	.000	.000	.000	0.0	0.0	0	0	0.0	22-0	4.0	.125	.000	.714	0.3	0.2	1	0	0.5

SCORING	Overall Statistics											Career Statistics										
	FG	FGA	FG%	3FG	FGA	3PT%	FT	FTA	FT%	PTS	PTS/G	FG	FGA	FG%	3FG	FGA	3PT%	FT	FTA	FT%	PTS	PTS/G
Chelsey Perry	31	58	.534	8	16	.500	15	18	.833	85	28.3	600	1278	.469	102	277	.368	288	342	.842	1590	15.7
Seygan Robins	10	21	.476	4	11	.364	4	4	1.000	28	9.3	10	21	.476	4	11	.364	4	4	1.000	28	9.3
Dasia Young	8	21	.381	2	6	.333	3	7	.429	21	7.0	79	190	.416	16	46	.348	40	66	.606	214	6.3
Hayley Harrison	5	10	.500	3	4	.750	6	8	.750	19	6.3	5	10	.500	3	4	.750	6	8	.750	19	6.3
Maddie Waldrop	7	19	.368	0	3	.000	4	9	.444	18	6.0	277	616	.450	51	170	.300	233	319	.730	838	8.6
Raegan Johnson	2	2	1.000	0	0	.000	0	0	.000	4	4.0	9	21	.429	0	0	.000	2	4	.500	20	1.0
Damiah Griffin	5	6	.833	0	0	.000	0	0	.000	10	3.3	157	347	.452	18	61	.295	82	106	.774	414	8.8
Demi Burdick	4	9	.444	0	1	.000	0	0	.000	8	2.7	95	212	.448	11	52	.212	28	46	.609	229	2.9
Kyannah Grant	0	1	.000	0	1	.000	2	2	1.000	2	2.0	84	203	.414	34	103	.330	49	62	.790	251	4.5
Zaire Hicks	1	1	1.000	0	0	.000	0	0	.000	2	2.0	136	390	.349	57	182	.313	61	87	.701	390	5.8
Paige Pipkin	1	4	.250	0	1	.000	0	0	.000	2	2.0	5	20	.250	0	8	.000	0	0	.000	10	2.5
Sade' Hudson	0	7	.000	0	2	.000	4	6	.667	4	1.3	65	203	.320	9	57	.158	36	61	.590	175	3.9
Macy Rippy	0	1	.000	0	1	.000	0	0	.000	0	0.0	3	24	.125	0	14	.000	5	7	.714	11	0.5

TOTALS	Overall Statistics										Career Statistics									
	ORB	DRB	TOTAL	PF	FO	A	TO	A/TO	Hi Pts		ORB	DRB	TOTAL	PF	FO	A	TO	A/TO	Hi Pts	
Chelsey Perry	4	18	22	10	0	6	7	0.9	85		183	464	647	323	16	154	221	0.7	1590	
Seygan Robins	1	3	4	8	0	14	14	1.0	28		1	3	4	8	0	14	14	1.0	28	
Dasia Young	6	13	19	9	0	8	3	2.7	21		55	56	111	94	4	53	47	1.1	214	
Hayley Harrison	1	5	6	6	0	2	9	0.2	19		1	5	6	6	0	2	9	0.2	19	
Maddie Waldrop	3	18	21	9	0	7	5	1.4	18		191	478	669	254	9	170	170	1.0	838	
Raegan Johnson	0	3	3	3	0	0	1	0.0	4		7	19	26	11	0	3	7	0.4	20	
Damiah Griffin	0	3	3	1	0	1	3	0.3	10		70	112	182	100	4	34	62	0.5	414	
Demi Burdick	3	5	8	2	0	2	2	1.0	8		58	120	178	94	0	47	54	0.9	229	
Kyannah Grant	0	0	0	0	0	1	1	1.0	2		24	55	79	79	2	132	107	1.2	251	
Zaire Hicks	0	0	0	1	0	0	0	0.0	2		42	77	119	107	4	110	70	1.6	390	
Paige Pipkin	1	0	1	1	0	2	0	0.0	2		2	2	4	5	0	10	8	1.3	10	
Sade' Hudson	0	3	3	1	0	4	5	0.8	4		26	40	66	78	1	52	59	0.9	175	
Macy Rippy	0	0	0	0	0	0	1	0.0	0		1	6	7	9	0	5	8	0.6	11	

SEASON/OVC STATISTICS

SUMMARY	Overall Statistics											OVC Statistics										
	GP	GS	Min/G	FG%	3PT%	FT%	R/G	A/G	STL	BLK	PTS/G	GP	GS	Min/G	FG%	3PT%	FT%	R/G	A/G	STL	BLK	PTS/G
Chelsey Perry	3	3	36.0	.534	.500	.833	7.3	2.0	5	4	28.3	1	1	39.0	.529	.500	.800	7.0	3.0	1	0	28.0
Seygan Robins	3	3	34.0	.476	.364	1.000	1.3	4.7	3	0	9.3	1	1	39.0	.333	.000	1.000	1.0	4.0	1	0	6.0
Dasia Young	3	3	33.7	.381	.333	.429	6.3	2.7	0	2	7.0	1	1	33.0	.250	.000	.000	9.0	3.0	0	1	4.0
Hayley Harrison	3	3	21.0	.500	.750	.750	2.0	0.7	2	0	6.3	1	1	19.0	1.000	1.000	.000	3.0	1.0	1	0	5.0
Maddie Waldrop	3	3	28.3	.368	.000	.444	7.0	2.3	3	1	6.0	1	1	27.0	.250	.000	.500	7.0	1.0	1	0	6.0
Raegan Johnson	1	0	6.0	1.000	.000	.000	3.0	0.0	0	0	4.0	-	-	-	-	-	-	-	-	-	-	-
Damiah Griffin	3	0	9.0	.833	.000	.000	1.0	0.3	0	0	3.3	1	0	9.0	.500	.000	.000	1.0	0.0	0	0	2.0
Demi Burdick	3	0	12.7	.444	.000	.000	2.7	0.7	0	0	2.7	1	0	8.0	.400	.000	.000	1.0	0.0	0	0	4.0
Zaire Hicks	1	0	5.0	1.000	.000	.000	0.0	0.0	1	0	2.0	1	0	5.0	1.000	.000	.000	0.0	0.0	1	0	2.0
Kyannah Grant	1	0	3.0	.000	.000	1.000	0.0	1.0	0	0	2.0	1	0	3.0	.000	.000	1.000	0.0	1.0	0	0	2.0
Paige Pipkin	1	0	18.0	.250	.000	.000	1.0	2.0	1	0	2.0	1	0	18.0	.250	.000	.000	1.0	2.0	1	0	2.0
Sade' Hudson	3	0	13.0	.000	.000	.667	1.0	1.3	2	0	1.3	1	0	0.0	.000	.000	.000	0.0	0.0	0	0	0.0
Macy Rippy	2	0	2.5	.000	.000	.000	0.0	0.0	0	0	0.0	1	0	0.0	.000	.000	.000	0.0	0.0	0	0	0.0
Total.....	3			.463	.370	.704	35.0	15.7	17	7	67.7	1			.407	.300	.778	37.0	15.0	6	1	61.0
Opponents.....	3			.398	.317	.709	37.3	12.7	22	7	70.0	1			.328	.267	.800	40.0	13.0	7	5	58.0

SCORING	Overall Statistics											OVC Statistics										
	FG	FGA	FG%	3FG	FGA	3PT%	FT	FTA	FT%	PTS	PTS/G	FG	FGA	FG%	3FG	FGA	3PT%	FT	FTA	FT%	PTS	PTS/G
Chelsey Perry	31	58	.534	8	16	.500	15	18	.833	85	28.3	9	17	.529	2	4	.500	8	10	.800	28	28.0
Seygan Robins	10	21	.476	4	11	.364	4	4	1.000	28	9.3	2	6	.333	0	3	.000	2	2	1.000	6	6.0
Dasia Young	8	21	.381	2	6	.333	3	7	.429	21	7.0	2	8	.250	0	0	.000	0	0	.000	4	4.0
Hayley Harrison	5	10	.500	3	4	.750	6	8	.750	19	6.3	2	2	1.000	1	1	1.000	0	0	.000	5	5.0
Maddie Waldrop	7	19	.368	0	3	.000	4	9	.444	18	6.0	2	8	.250	0	0	.000	2	4	.500	6	6.0
Raegan Johnson	2	2	1.000	0	0	.000	0	0	.000	4	4.0	-	-	-	-	-	-	-	-	-	-	-
Damiah Griffin	5	6	.833	0	0	.000	0	0	.000	10	3.3	1	2	.500	0	0	.000	0	0	.000	2	2.0
Demi Burdick	4	9	.444	0	1	.000	0	0	.000	8	2.7	2	5	.400	0	0	.000	0	0	.000	4	4.0
Zaire Hicks	1	1	1.000	0	0	.000	0	0	.000	2	2.0	1	1	1.000	0	0	.000	0	0	.000	2	2.0
Kyannah Grant	0	1	.000	0	1	.000	2	2	1.000	2	2.0	0	1	.000	0	1	.000	2	2	1.000	2	2.0
Paige Pipkin	1	4	.250	0	1	.000	0	0	.000	2	2.0	1	4	.250	0	1	.000	0	0	.000	2	2.0
Sade' Hudson	0	7	.000	0	2	.000	4	6	.667	4	1.3	0	0	.000	0	0	.000	0	0	.000	0	0.0
Macy Rippy	0	1	.000	0	1	.000	0	0	.000	0	0.0	0	0	.000	0	0	.000	0	0	.000	0	0.0
Total.....	74	160	.463	17	46	.370	38	54	.704	203	67.7	22	54	.407	3	10	.300	14	18	.778	61	61.0
Opponents.....	76	191	.398	19	60	.317	39	55	.709	210	70.0	21	64	.328	4	15	.267	12	15	.800	58	58.0

Overall Statistics										OVC Statistics									
TOTALS	ORB	DRB	TOTAL	PF	FO	A	TO	A/TO	Hi Pts	ORB	DRB	TOTAL	PF	FO	A	TO	A/TO	Hi Pts	
Chelsey Perry	4	18	22	10	0	6	7	0.9	31	1	6	7	4	0	3	4	0.8	28	
Seygan Robins	1	3	4	8	0	14	14	1.0	16	0	1	1	2	0	4	3	1.3	6	
Dasia Young	6	13	19	9	0	8	3	2.7	12	5	4	9	2	0	3	0	0.0	4	
Hayley Harrison	1	5	6	6	0	2	9	0.2	10	0	3	3	1	0	1	4	0.3	5	
Maddie Waldrop	3	18	21	9	0	7	5	1.4	8	0	7	7	2	0	1	2	0.5	6	
Raegan Johnson	0	3	3	3	0	0	1	0.0	4	-	-	-	-	-	-	-	-	-	
Damiah Griffin	0	3	3	1	0	1	3	0.3	8	0	1	1	1	0	0	0	0.0	2	
Demi Burdick	3	5	8	2	0	2	2	1.0	4	0	1	1	1	0	0	0	0.0	4	
Zaire Hicks	0	0	0	1	0	0	0	0.0	2	0	0	0	1	0	0	0	0.0	2	
Kyannah Grant	0	0	0	0	0	1	1	1.0	2	0	0	0	0	0	1	1	1.0	2	
Paige Pipkin	1	0	1	1	0	2	0	0.0	2	1	0	1	1	0	2	0	0.0	2	
Sade' Hudson	0	3	3	1	0	4	5	0.8	3	0	0	0	0	0	0	0	0.0	0	
Macy Rippy	0	0	0	0	0	0	1	0.0	0	0	0	0	0	0	0	0	0.0	0	
Total.....	25	80	105	51	0	47	52	0.9	75	12	25	37	15	0	15	14	1.1	61	
Opponents.....	43	69	112	51	-	38	39	1.0	85	19	21	40	16	0	13	13	1.0	58	

OVC STATISTICS

RECORD:	OVERALL	HOME	AWAY	NEUTRAL
ALL GAMES	2-1	0-0	2-1	0-0
CONFERENCE	1-0	0-0	1-0	0-0
NON-CONFERENCE	1-1	0-0	1-1	0-0

##	Player	GP	GS	Min	Avg	TOTAL			3-PTS			FREE THROWS			REBOUNDS				PF	FO	A	TO	Blk	Stl	Pts	Avg
						FG	FGA	Pct	3FG	FGA	Pct	FT	FTA	Pct	Off	Def	Tot	Avg								
20	Chelsey Perry	1	1	39	39.0	9	17	.529	2	4	.500	8	10	.800	1	6	7	7.0	4	0	3	4	0	1	28	28.0
21	Maddie Waldrop	1	1	27	27.0	2	8	.250	0	0	.000	2	4	.500	0	7	7	7.0	2	0	1	2	0	1	6	6.0
05	Seygan Robins	1	1	39	39.0	2	6	.333	0	3	.000	2	2	1.000	0	1	1	1.0	2	0	4	3	0	1	6	6.0
23	Hayley Harrison	1	1	19	19.0	2	2	1.000	1	1	1.000	0	0	.000	0	3	3	3.0	1	0	1	4	0	1	5	5.0
13	Demi Burdick	1	0	8	8.0	2	5	.400	0	0	.000	0	0	.000	0	1	1	1.0	1	0	0	0	0	0	4	4.0
11	Dasia Young	1	1	33	33.0	2	8	.250	0	0	.000	0	0	.000	5	4	9	9.0	2	0	3	0	1	0	4	4.0
35	Paige Pipkin	1	0	18	18.0	1	4	.250	0	1	.000	0	0	.000	1	0	1	1.0	1	0	2	0	0	1	2	2.0
31	Kyannah Grant	1	0	3	3.0	0	1	.000	0	1	.000	2	2	1.000	0	0	0	0.0	0	0	1	1	0	0	2	2.0
22	Damiah Griffin	1	0	9	9.0	1	2	.500	0	0	.000	0	0	.000	0	1	1	1.0	1	0	0	0	0	0	2	2.0
14	Zaire Hicks	1	0	5	5.0	1	1	1.000	0	0	.000	0	0	.000	0	0	0	0.0	1	0	0	0	0	1	2	2.0
02	Sade' Hudson	1	0	0	0.0	0	0	.000	0	0	.000	0	0	.000	0	0	0	0.0	0	0	0	0	0	0	0	0.0
03	Macy Rippy	1	0	0	0.0	0	0	.000	0	0	.000	0	0	.000	0	0	0	0.0	0	0	0	0	0	0	0	0.0
TM	TEAM.....														5	2	7	7.0	0			0			0	
	Total.....	1				22	54	.407	3	10	.300	14	18	.778	12	25	37	37.0	15	0	15	14	1	6	61	61.0
	Opponents.....	1				21	64	.328	4	15	.267	12	15	.800	19	21	40	40.0	16	-	13	13	5	7	58	58.0

Team Statistics	UTM	OPP
SCORING	61	58
Points per game	61.0	58.0
Scoring margin	+3.0	-
FIELD GOALS-ATT	22-54	21-64
Field goal pct	.407	.328
3 POINT FG-ATT	3-10	4-15
3-point FG pct	.300	.267
3-pt FG made per game	3.0	4.0
FREE THROWS-ATT	14-18	12-15
Free throw pct	.778	.800
F-Throws made per game	14.0	12.0
REBOUNDS	37	40
Rebounds per game	37.0	40.0
Rebounding margin	-3.0	-
ASSISTS	15	13
Assists per game	15.0	13.0
TURNOVERS	14	13
Turnovers per game	14.0	13.0
Turnover margin	-1.0	-
Assist/turnover ratio	1.1	1.0
STEALS	6	7
Steals per game	6.0	7.0
BLOCKS	1	5
Blocks per game	1.0	5.0
ATTENDANCE	0	274
Home games-Avg/Game	0-0	1-274
Neutral site-Avg/Game	-	0-0

Date	Opponent	Score	Attend
12/18/20	at Southeast Missouri	W 61-58	274

Score By Periods:	1st	2nd	3rd	4th	Total
UT Martin	11	17	15	18	61
Opponents	8	8	25	17	58

SEASON STATISTICS

RECORD:	OVERALL	HOME	AWAY	NEUTRAL
ALL GAMES	2-1	0-0	2-1	0-0
CONFERENCE	1-0	0-0	1-0	0-0
NON-CONFERENCE	1-1	0-0	1-1	0-0

##	Player	GP	GS	Min	Avg	TOTAL			3-PTS			FREE THROWS			REBOUNDS				PF	FO	A	TO	Blk	Stl	Pts	Avg
						FG	FGA	Pct	3FG	FGA	Pct	FT	FTA	Pct	Off	Def	Tot	Avg								
20	Chelsey Perry	3	3	108	36.0	31	58	.534	8	16	.500	15	18	.833	4	18	22	7.3	10	0	6	7	4	5	85	28.3
05	Seygan Robins	3	3	102	34.0	10	21	.476	4	11	.364	4	4	1.000	1	3	4	1.3	8	0	14	14	0	3	28	9.3
11	Dasia Young	3	3	101	33.7	8	21	.381	2	6	.333	3	7	.429	6	13	19	6.3	9	0	8	3	2	0	21	7.0
23	Hayley Harrison	3	3	63	21.0	5	10	.500	3	4	.750	6	8	.750	1	5	6	2.0	6	0	2	9	0	2	19	6.3
21	Maddie Waldrop	3	3	85	28.3	7	19	.368	0	3	.000	4	9	.444	3	18	21	7.0	9	0	7	5	1	3	18	6.0
10	Raegan Johnson	1	0	6	6.0	2	2	1.000	0	0	.000	0	0	.000	0	3	3	3.0	3	0	0	1	0	0	4	4.0
22	Damiah Griffin	3	0	27	9.0	5	6	.833	0	0	.000	0	0	.000	0	3	3	1.0	1	0	1	3	0	0	10	3.3
13	Demi Burdick	3	0	38	12.7	4	9	.444	0	1	.000	0	0	.000	3	5	8	2.7	2	0	2	2	0	0	8	2.7
31	Kyannah Grant	1	0	3	3.0	0	1	.000	0	1	.000	2	2	1.000	0	0	0	0.0	0	0	1	1	0	0	2	2.0
14	Zaire Hicks	1	0	5	5.0	1	1	1.000	0	0	.000	0	0	.000	0	0	0	0.0	1	0	0	0	0	1	2	2.0
35	Paige Pipkin	1	0	18	18.0	1	4	.250	0	1	.000	0	0	.000	1	0	1	1.0	1	0	2	0	0	1	2	2.0
02	Sade' Hudson	3	0	39	13.0	0	7	.000	0	2	.000	4	6	.667	0	3	3	1.0	1	0	4	5	0	2	4	1.3
03	Macy Rippy	2	0	5	2.5	0	1	.000	0	1	.000	0	0	.000	0	0	0	0.0	0	0	0	1	0	0	0	0.0
TM	TEAM.....														6	9	15	5.0	0			1			0	
	Total.....	3				74	160	.463	17	46	.370	38	54	.704	25	80	105	35.0	51	0	47	52	7	17	203	67.7
	Opponents.....	3				76	191	.398	19	60	.317	39	55	.709	43	69	112	37.3	51	-	38	39	7	22	210	70.0

Team Statistics	UTM	OPP
SCORING	203	210
Points per game	67.7	70.0
Scoring margin	-2.3	-
FIELD GOALS-ATT	74-160	76-191
Field goal pct	.463	.398
3 POINT FG-ATT	17-46	19-60
3-point FG pct	.370	.317
3-pt FG made per game	5.7	6.3
FREE THROWS-ATT	38-54	39-55
Free throw pct	.704	.709
F-Throws made per game	12.7	13.0
REBOUNDS	105	112
Rebounds per game	35.0	37.3
Rebounding margin	-2.3	-
ASSISTS	47	38
Assists per game	15.7	12.7
TURNOVERS	52	39
Turnovers per game	17.3	13.0
Turnover margin	-4.3	-
Assist/turnover ratio	0.9	1.0
STEALS	17	22
Steals per game	5.7	7.3
BLOCKS	7	7
Blocks per game	2.3	2.3
ATTENDANCE	0	3171
Home games-Avg/Game	0-0	3-1057
Neutral site-Avg/Game	-	0-0

Date	Opponent		Score	Attend
12/06/20	at #5 Louisville	L	67-85	2709
12/08/20	at Samford	W	75-67	188
12/18/20	at Southeast Missouri	W	61-58	274

Score By Periods:	1st	2nd	3rd	4th	Total
UT Martin	41	51	62	49	203
Opponents	43	55	62	50	210

RADIO/TV CALL SHEET



0

EMMA DAVISG • 5-10 • Junior
Harrodsburg, Ky.

2

SADE' HUDSONG • 5-8 • Junior
Memphis, Tenn.

3

MACY RIPPYG • 5-9 • Sophomore
Clarksville, Tenn.

5

SEYGAN ROBINSG • 5-10 • R-Sophomore
Harrodsburg, Ky.

10

RAEGAN JOHNSONF • 6-2 • Sophomore
Martin, Tenn.

11

DASIA YOUNGF • 5-11 • Sophomore
Jonesboro, Ark.

13

DEMI BURDICKF • 6-2 • Senior
Marshall, Ill.

14

ZAIRE HICKSG • 5-7 • R-Junior
Memphis, Tenn.

20

CHELSEY PERRYF • 6-2 • Senior
Middleton, Tenn.

21

MADDIE WALDROPF • 6-2 • Senior
Murray, Ky.

22

DAMIAH GRIFFINF • 6-0 • R-Junior
Memphis, Tenn.

23

HAYLEY HARRISONG/F • 5-10 • R-Freshman
Nicholasville, Ky.

31

KYANNAH GRANTG • 5-7 • Junior
Choctaw, Miss.

35

PAIGE PIPKING • 5-10 • R-Junior
Henderson, Tenn.

44

HALEY NICHOLSF • 6-0 • Freshman
Avon, Ind.

COACHING STAFF

**KEVIN McMILLAN**HEAD COACH
12th Season**WILLIE TREVATHAN**ASSISTANT COACH
First Season**JASMINE NEWSOME**ASSISTANT COACH
Sixth Season**DAVID HART**ASSISTANT COACH
10th Season**KELSEY JOHNSON**GRADUATE ASSISTANT
Second Season**DARBY MAGGARD**GRADUATE ASSISTANT
First Season**STACIE EVANS**DIR. OF OPERATIONS
11th Season